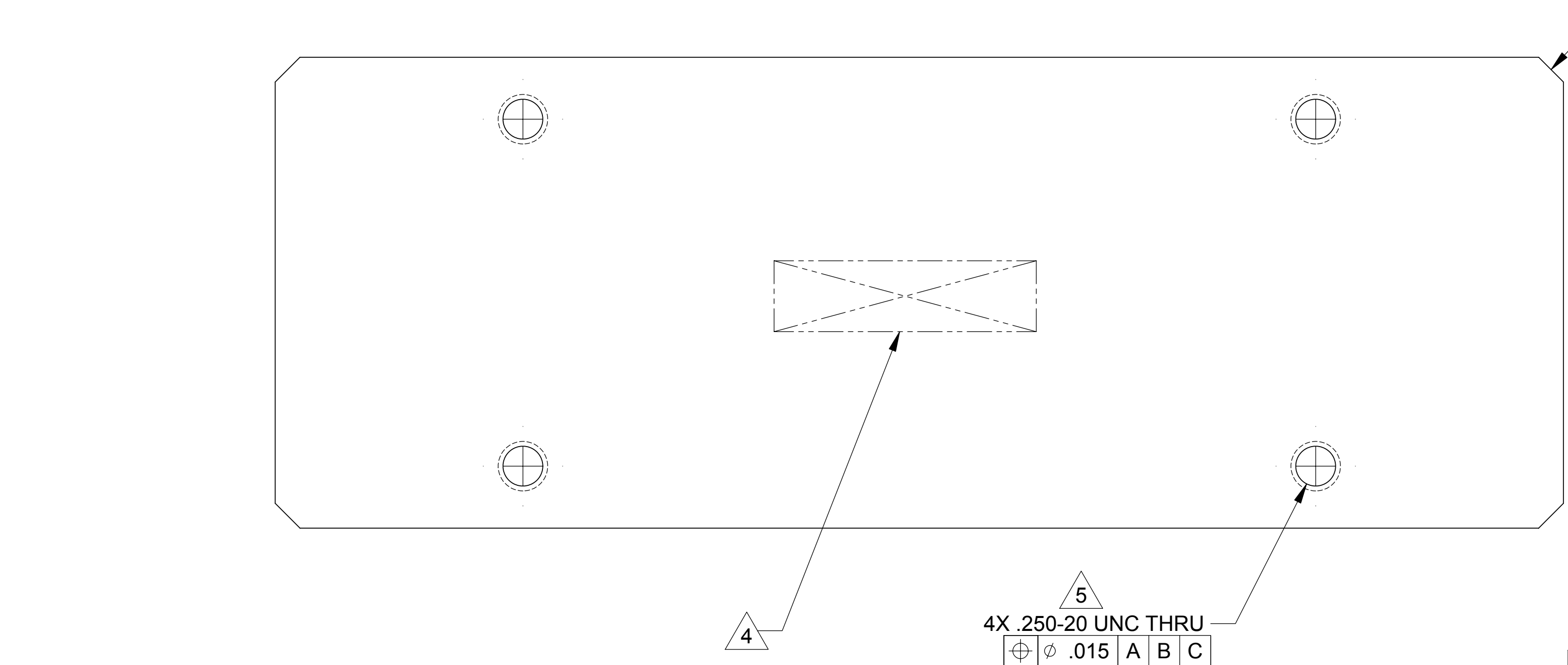
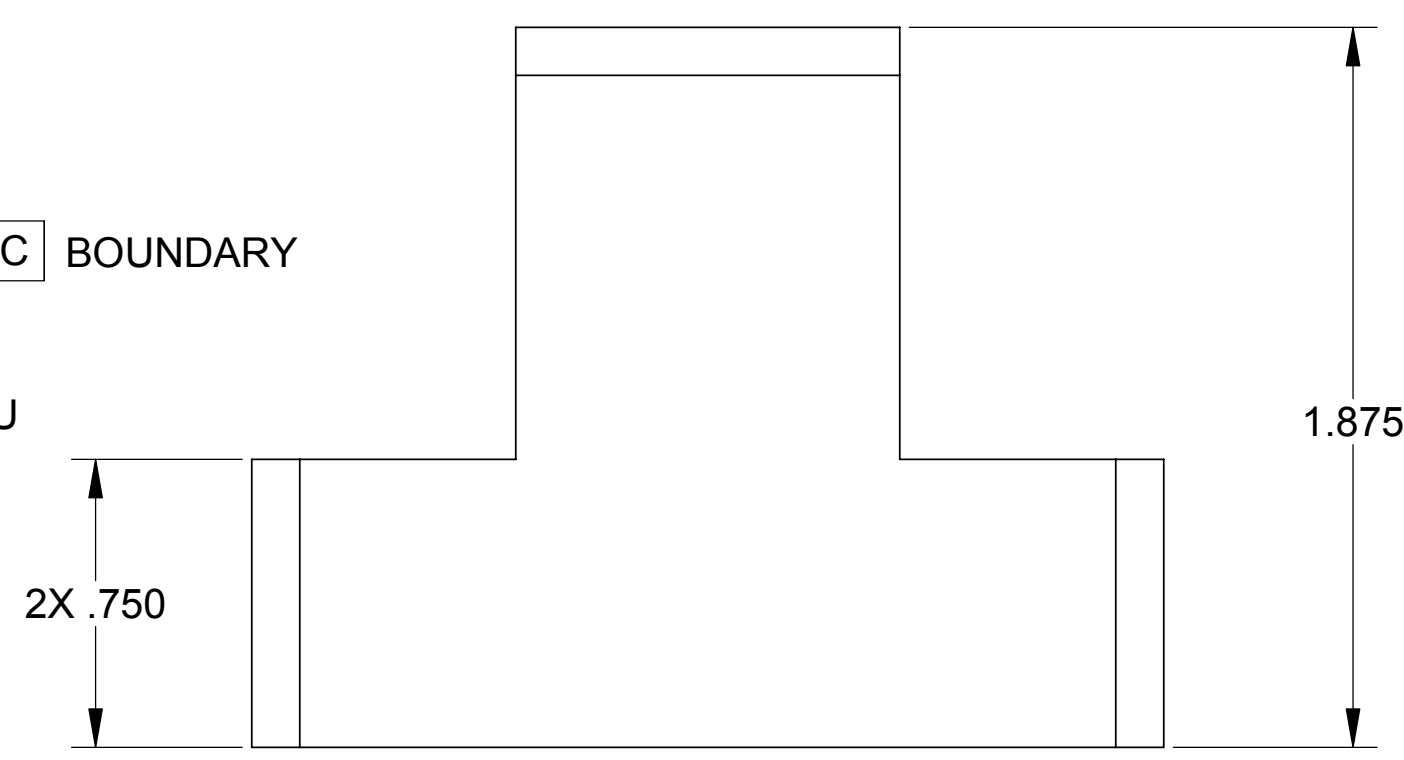
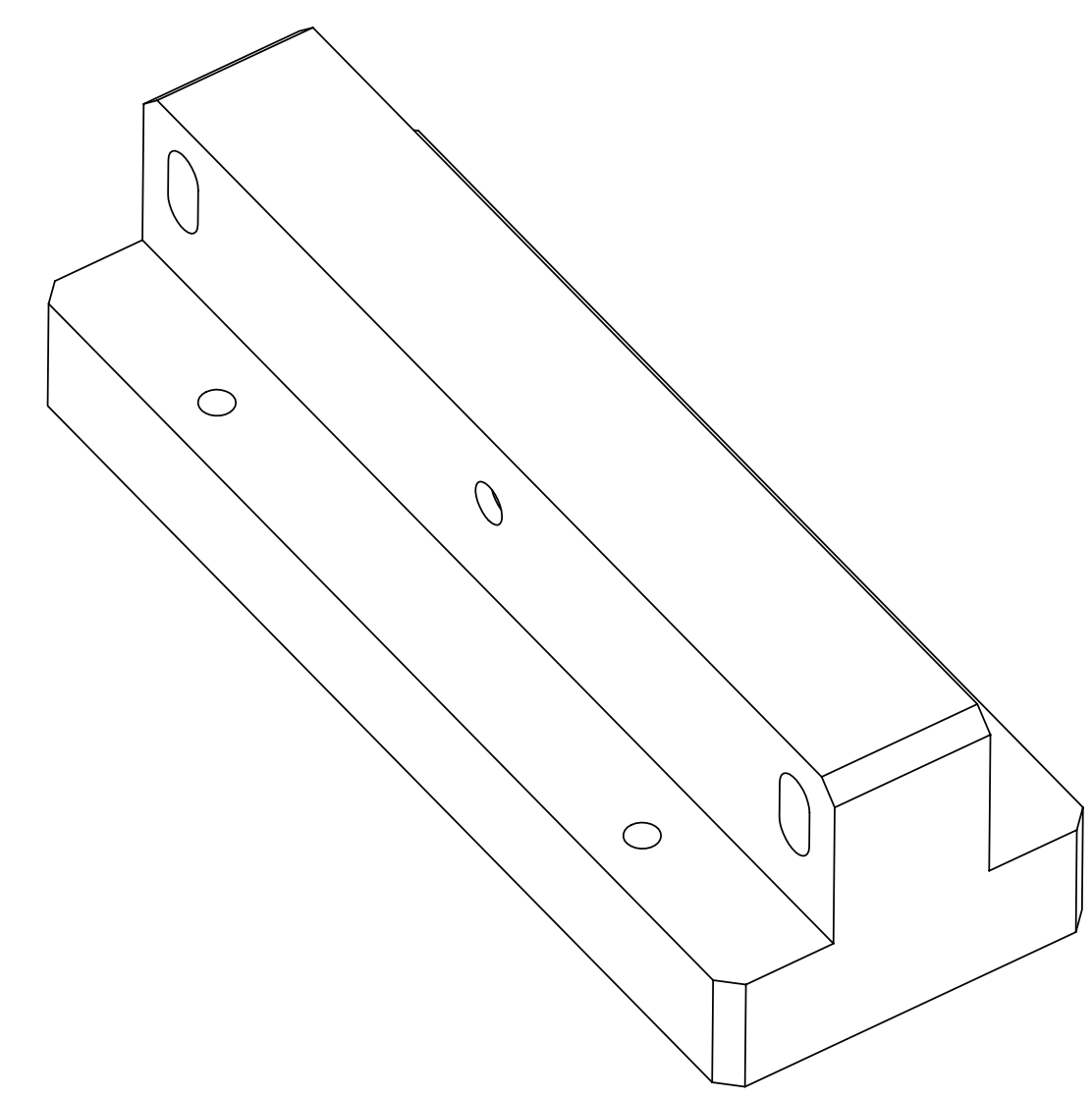
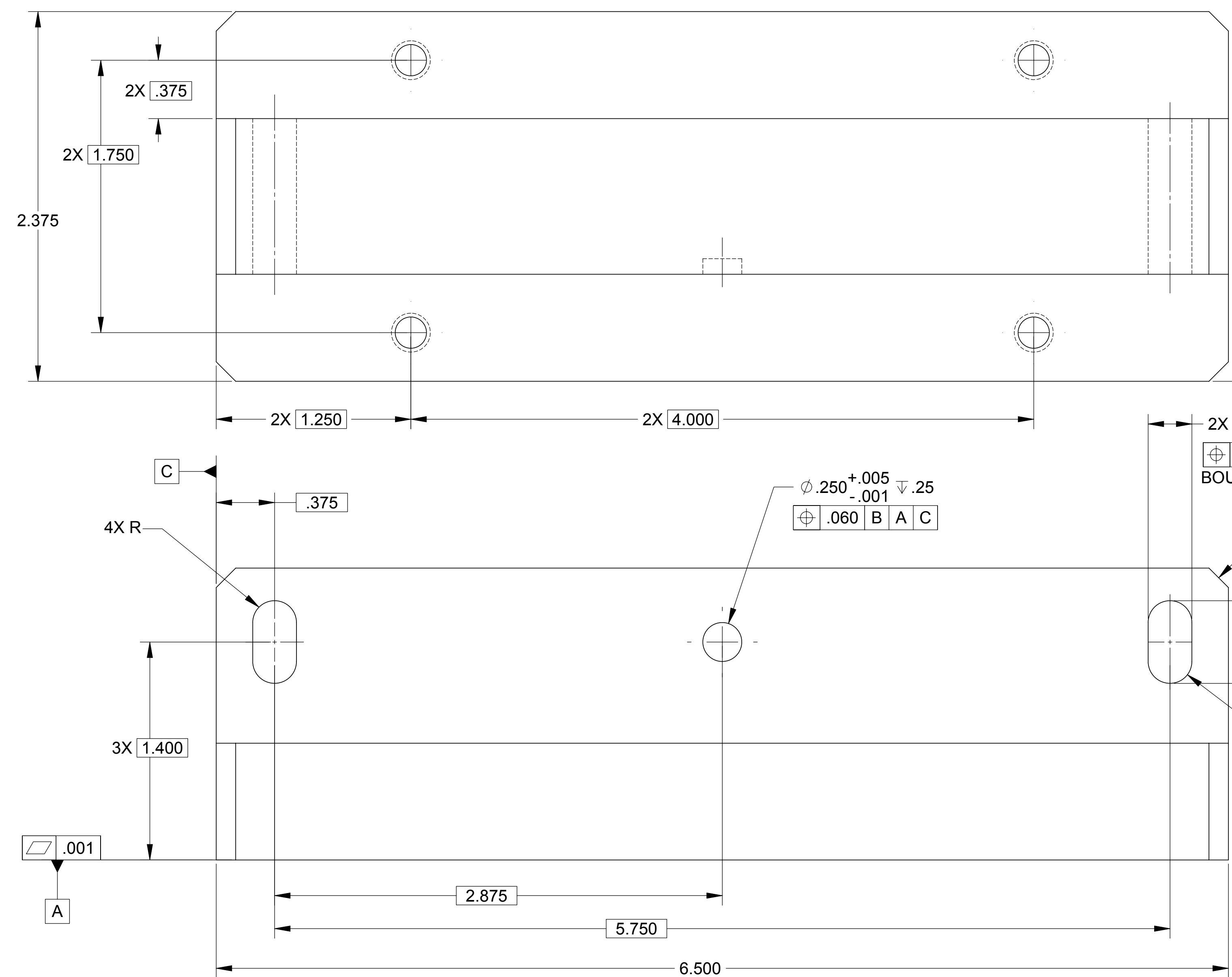


LTR		ZONE		REVISIONS											DWN	CHK	P-ENG	CONFIG	ME	STRS	MATL	PROJ	QA	RELEASE DATE
A				INITIAL RELEASE																				



NOTES: UNLESS OTHERWISE SPECIFIED.

- ALL PARTS SHALL BE MANUFACTURED IN ACCORDANCE WITH ASI SPECIFICATION 20008225 (LIGO E048225).
- REMOVE ALL BURRS AND SHARP EDGES .005-.015.
- MACHINE FILLET RADII .003-.015.
- MARK PART AND SERIAL NUMBER IN LOCATION APPROXIMATELY AS SHOWN USING 0.13-INCH HIGH CHARACTERS IN ACCORDANCE WITH 20006686, TYPE I, CLASSES 4, 5, OR 6. SERIAL NUMBERS START AT 001 FOR FIRST PART AND PROCEED CONSECUTIVELY. PARTS TOO SMALL TO MARK SHALL BE IDENTIFIED IN ACCORDANCE WITH 20006686, TYPE II.
- THREADED HOLES SHALL BE PRODUCED TO A .004-.006 OVERSIZE CONDITION ON THE PITCH DIAMETER BASED ON A 2B CONDITION. THIS DOES NOT APPLY TO THREADED INSERT HOLES.
- COUNTERSINK 82° ALL TAPPED HOLES TO MAJOR DIAMETER +.015/-0.000.
- COUNTERSINK 82° ALL DRILLED HOLES .015-.030 DEEP BOTH SIDES.
- RECORD WEIGHT TO NEAREST 0.1 LB ON INSPECTION REPORT AFTER FINAL MACHINING. ESTIMATED WEIGHT IS 1.8 LBS.

THIS DOCUMENT MAY CONTAIN ITAR CONTROLLED INFORMATION AND/OR COMMERCE CONTROLLED INFORMATION EXPORT RESTRICTIONS MAY APPLY

FILE ATTACHMENTS
20007911.x_t

20007911-1		PART OR IDENTIFYING NO		NOMENCLATURE OR DESCRIPTION		SPECIFICATION		MATERIAL OR NOTE		ZONE	
QTY REQD	ITEM NO	REF DES	CAGE NO	PARTS LIST							
CONTRACT NO		UNLESS OTHERWISE SPECIFIED DIMENSIONS ARE IN INCHES TOLERANCES		RELEASED 1/17/2005		ALLIANCE SPACESYSTEMS, INC. 1250 Lincoln Ave., Suite 100 Pasadena, CA 91103		BRACKET, STAGE 0-1 HORZ ACT COIL ADAPTOR LIGO D047911-A			
		DECIMALS .XX ±.03 ANGLES .XXX ±.010 ± 1/2°		MACHINE FINISH 125 ✓ DO NOT SCALE DRAWING INTERPRET DWG PER ASME Y14.5M-1994		DWN R.D.BILLING PROJ ENGR STRS 07/16/04		SIZE D CAGE CODE 1KNU9 SCALE 2:1		REV A SHEET 1 OF 1	
20007970		1388		MATERIAL AL 6061-T651 AMS-QQ-A-250/11		CHK CONFIG ME		MATL PROJ QA		UNCLASSIFIED REV 7/04	
NEXT ASSEMBLY		PROJECT CODE		APPLICATION							