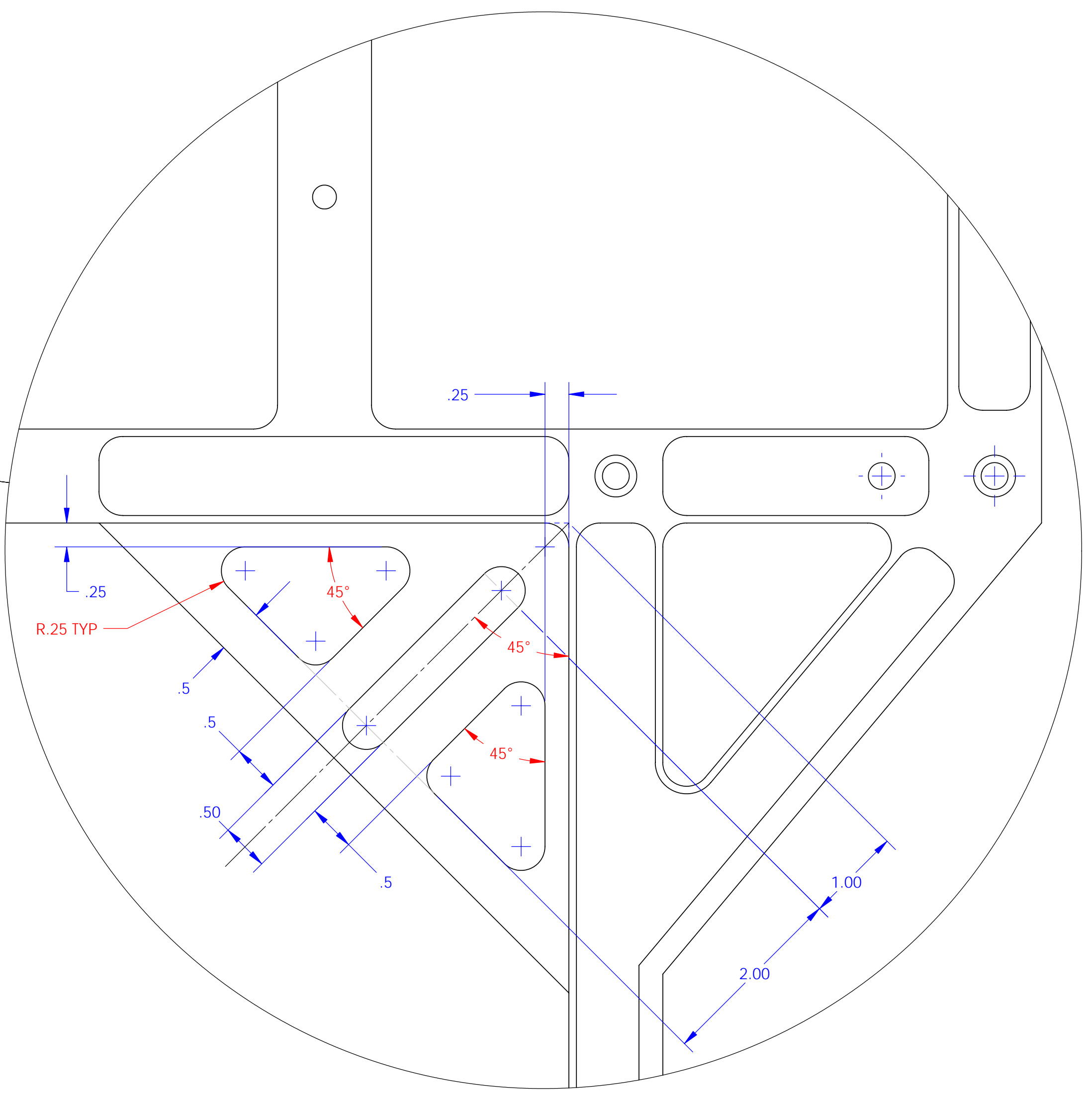
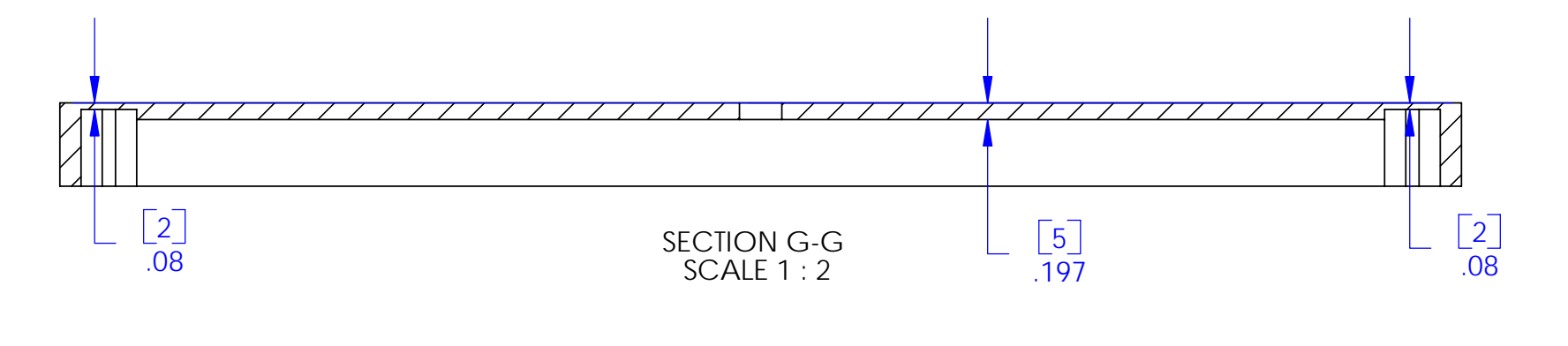
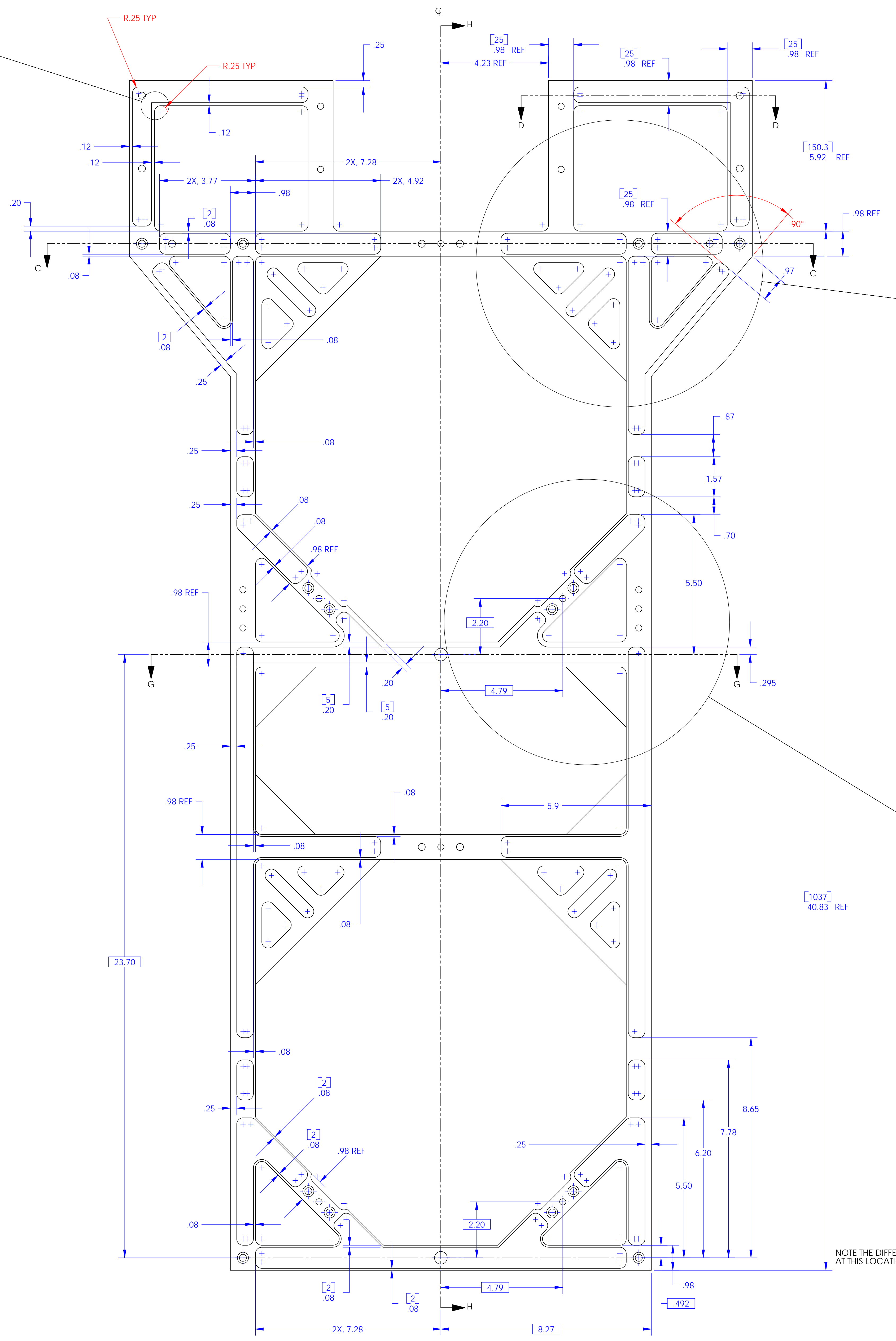
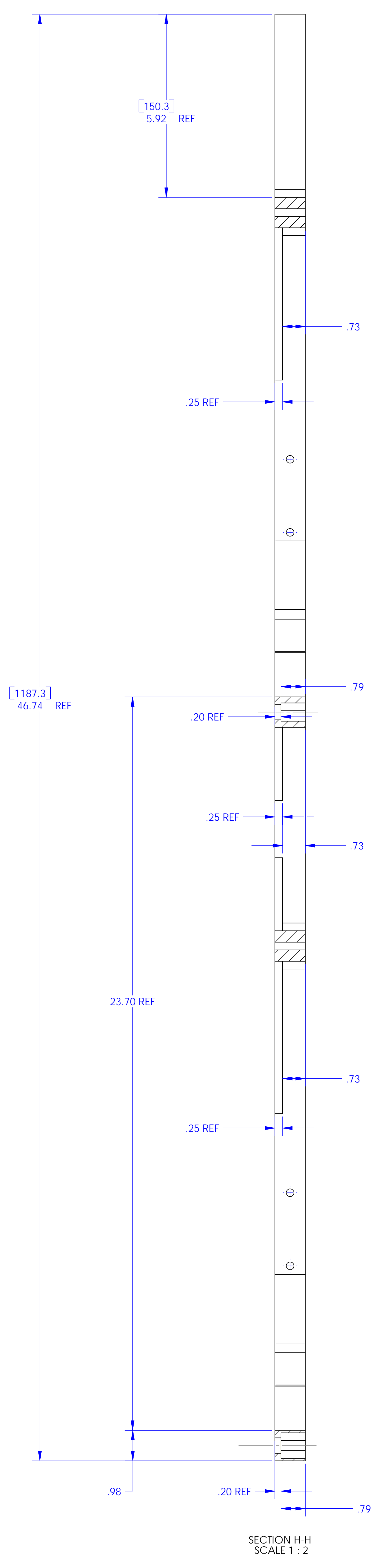
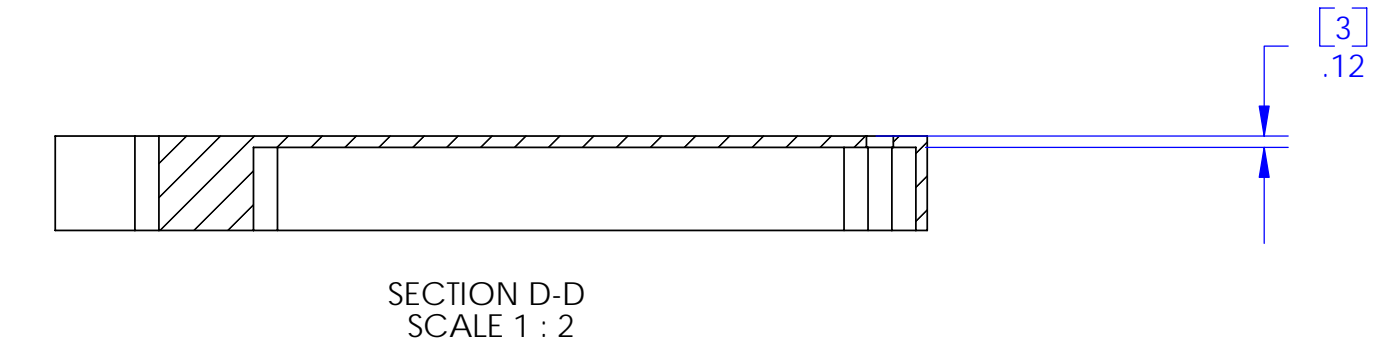
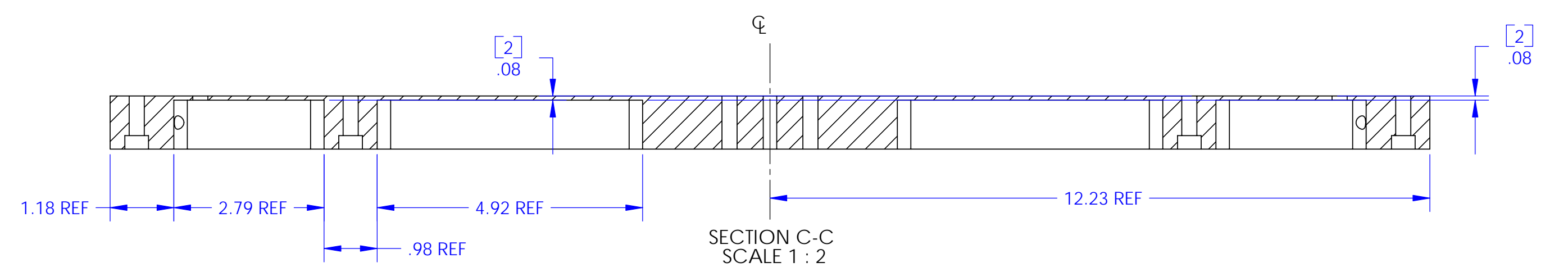
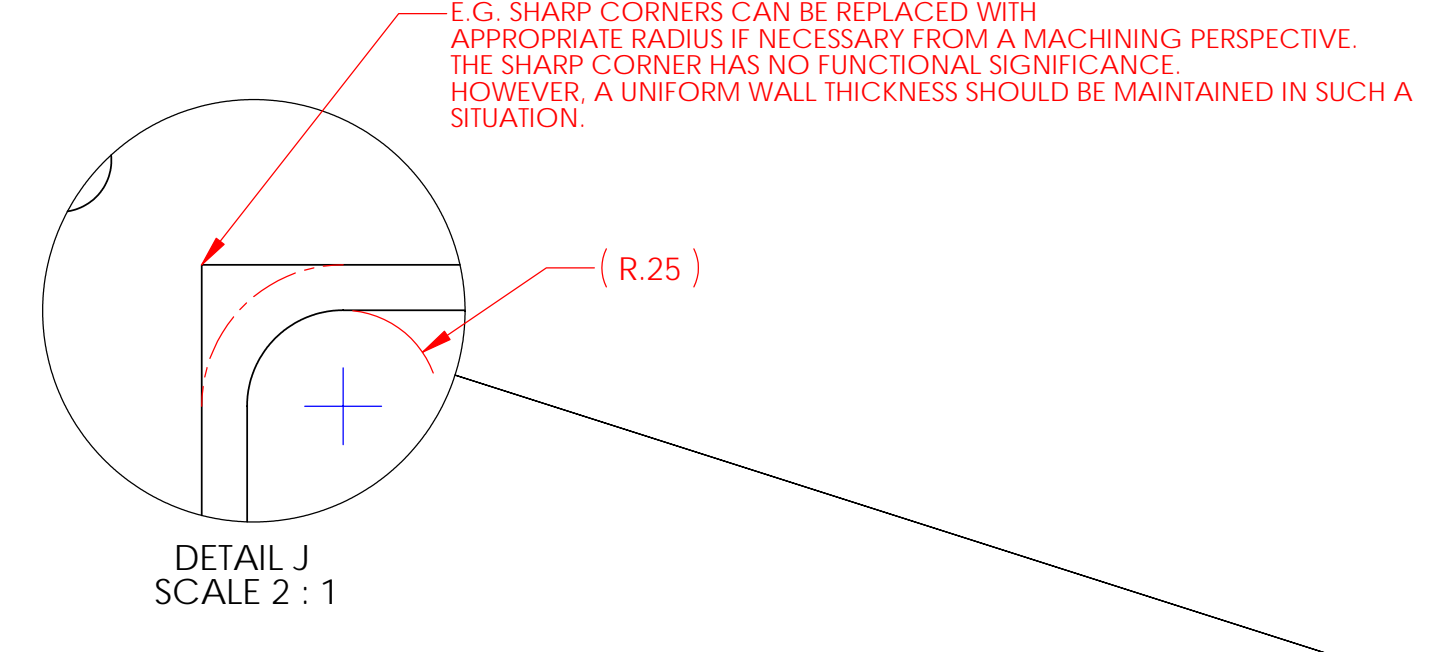
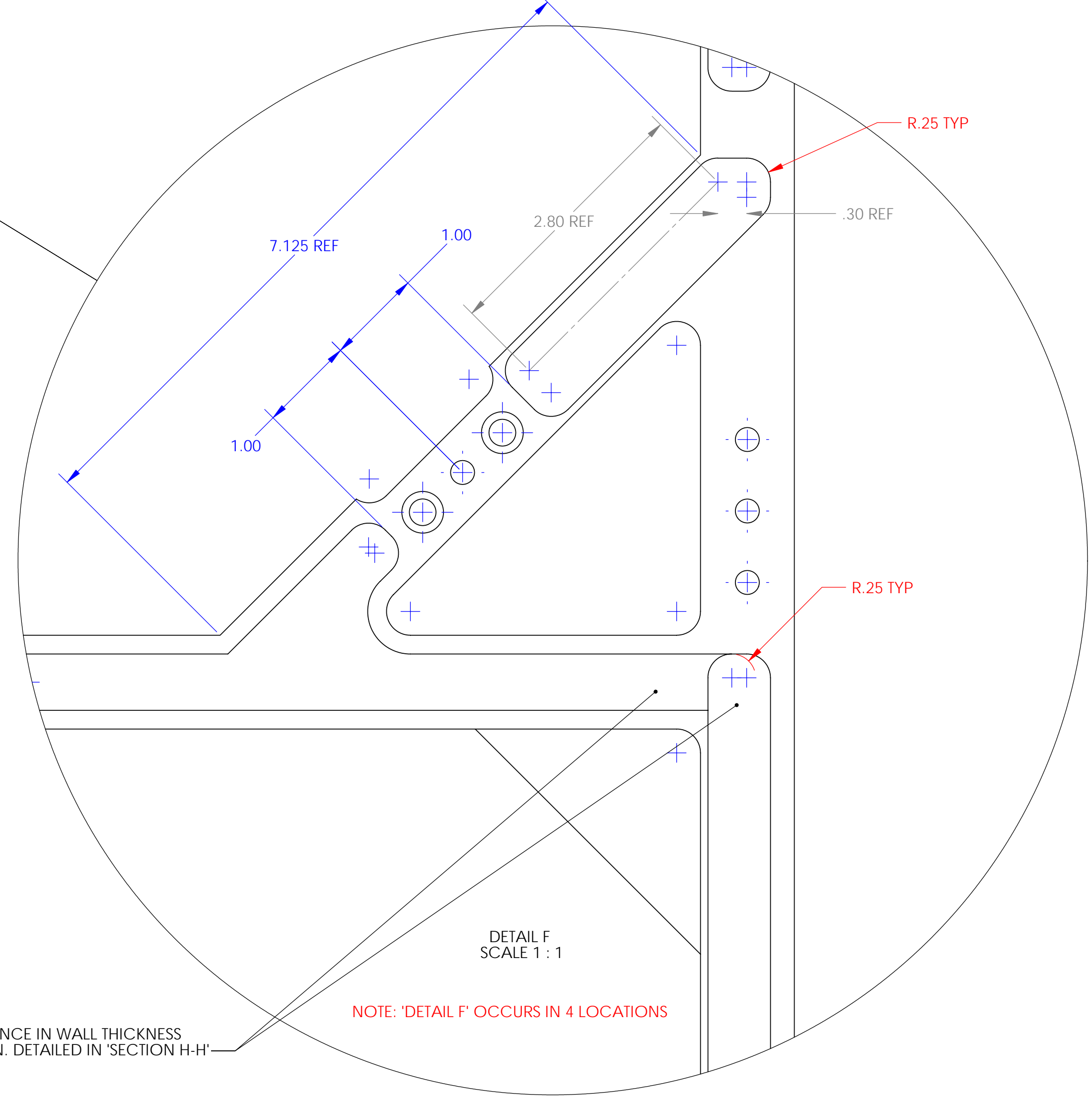




REV	DATE	DESCRIPTION	DRAWING TITLE



NOTE: 'DETAIL E' OCCURS IN 4 LOCATIONS



NOTE: 'DETAIL F' OCCURS IN 4 LOCATIONS

NOTE THE DIFFERENCE IN WALL THICKNESS AT THIS LOCATION. DETAILED IN 'SECTION H-H'

**GENERAL NOTES (UNLESS OTHERWISE SPECIFIED)**

- DO NOT SCALE FROM DRAWING.
- REMOVE ALL SHARP EDGES, R.03 MIN.
- ALL MACHINING FLUIDS SHALL BE WATER SOLUBLE AND FREE OF SULFUR, CHLORINE AND SILICONE.
- SCRIBE, ENGRAVE OR MECHANICALLY STAMP DRAWING (NO INKS OR DYES) PART NUMBER, REVISION ON NOTED SURFACE OF PART FOLLOWED ON THE NEXT LINE WITH A THREE DIGIT SERIAL NUMBER. SERIAL NUMBERS START AT 001 FOR THE FIRST ARTICLE AND PROCEED CONSECUTIVELY. USE 12 HIGH CHARACTERS, UNLESS THE SIZE OF THE PART dictates SMALL CHARACTERS. A VIBRATORY TOOL MAY BE USED. EXAMPLE: 000000001 5/16/001
- THE COMPONENT IS SYMMETRIC ABOUT THE Q.
- DUAL DIMENSIONS (MILLIMETERS) APPEAR IN SQUARE BRACKETS, PRIMARILY FOR ADVANCED LIGO TECHNICAL REFERENCE.
- BACKGROUND INFORMATION: INITIAL DISCUSSIONS WITH MACHINISTS AT CALTECH INDICATED THAT WATER JET CUTTING WOULD BE USED TO ACHIEVE THE BASIC SHAPES, THEN ANY FINISHING WOULD BE DONE BY MILLING WITH A R.25 CUTTER.

PARTS LIST		
QUANTITY	PART NAME	PART NUMBER
1	FACEPLATE	D050035

MATERIAL: 6061-T6 Al

FINISH: 32 µinch

DRAWN: E

CHECKED: E

DATE: 08/03/00

SCALE: 1:1

PROJECTION: 1st

SHEET 2 OF 3

ADVANCED LIGO

SUB-SYSTEM: SUS

ASSEMBLY: RIG\_SINGLE CATCHER

FACEPLATE

D050035

REV: A1

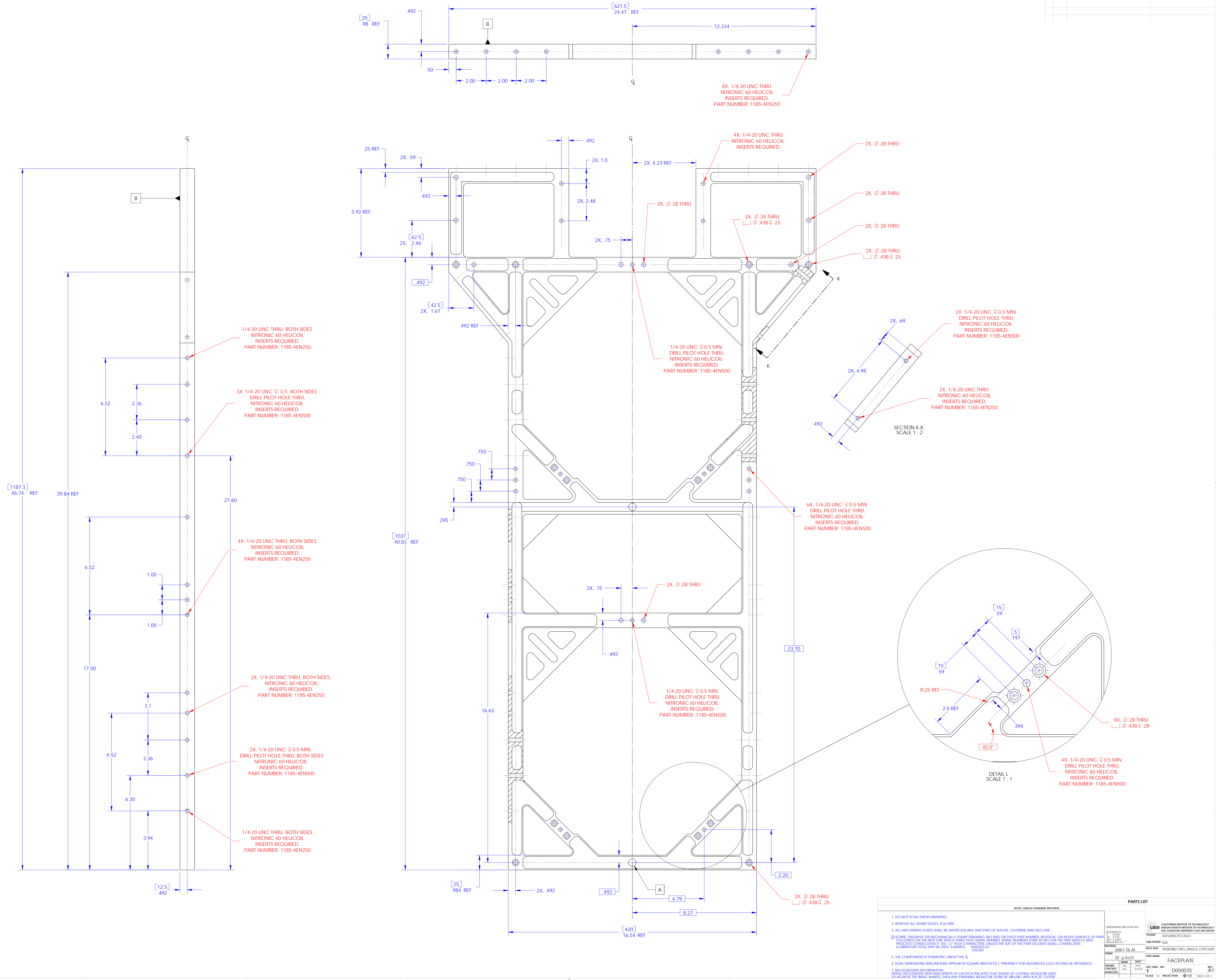
SCALE: 1:1

PROJECTION: 1st

SHEET 2 OF 3



REV	DATE	DCN#	DRAWING TRF #



**NOTES (UNLESS OTHERWISE SPECIFIED)**

- DO NOT SCALE FROM DRAWING
- REMOVE ALL SHARP EDGES, R.02 MIN
- ALL MACHINING FLUDES SHALL BE WATER SOLUBLE AND FREE OF SULFUR, CHLORINE AND SILICONE
- SCREWS, ENGRAVE OR MECHANICALLY STAMP DRAWING DIMENSIONS OR DIMS) PART NUMBER, REVISION, ON NOTED SURFACE OF PART FOLLOWED ON THE NEXT LINE WITH A THREE DIGIT SERIAL NUMBER. SERIAL NUMBERS START AT 001 FOR THE FIRST ARTICLE AND INCREASE CONSECUTIVELY. USE 12 HIGH CHARACTERS, UNLESS THE SIZE OF THE PART DICTATES SMALL CHARACTERS. A VIBRATORY TOOL MAY BE USED. EXAMPLE: 0000003-A1 0/1/01
- THE COMPONENT IS SYMMETRIC ABOUT THE  $\phi$
- DUAL DIMENSIONS (MILLIMETERS) APPEAR IN SQUARE BRACKETS | PRIMARILY FOR ADVANCED LIGO TECHNICAL REFERENCE
- BACKGROUND INFORMATION: INITIAL DISCUSSIONS WITH MACHINISTS AT CALTECH INDICATED THAT WATER JET CUTTING WOULD BE USED TO ACHIEVE THE BASIC SHAPES, THEN ANY FINISHING WOULD BE DONE BY MILLING WITH A R.25 CUTTER.

**PARTS LIST**

QTY	PART NAME	PART NUMBER	REV
1	FACEPLATE	0061-16 Al	A1

**MANUFACTURER:** CALIFORNIA INSTITUTE OF TECHNOLOGY  
**DESIGNED BY:** LIGO  
**DATE:** 05/03/11  
**SCALE:** 1:1  
**PROJECTION:** 1st Angle  
**REV:** A1  
**SCALE:** 1:1  
**PROJECTION:** 1st Angle