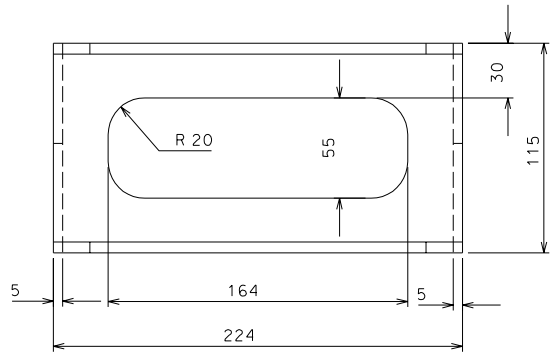
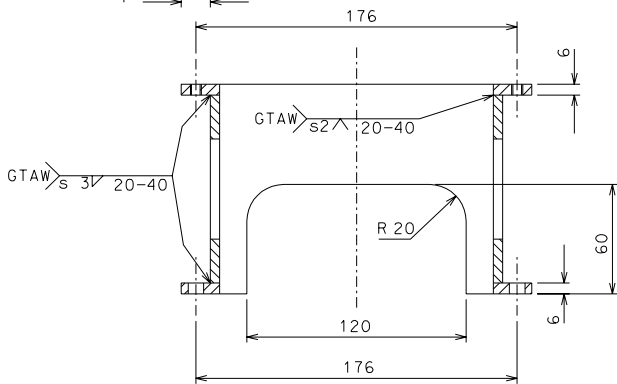
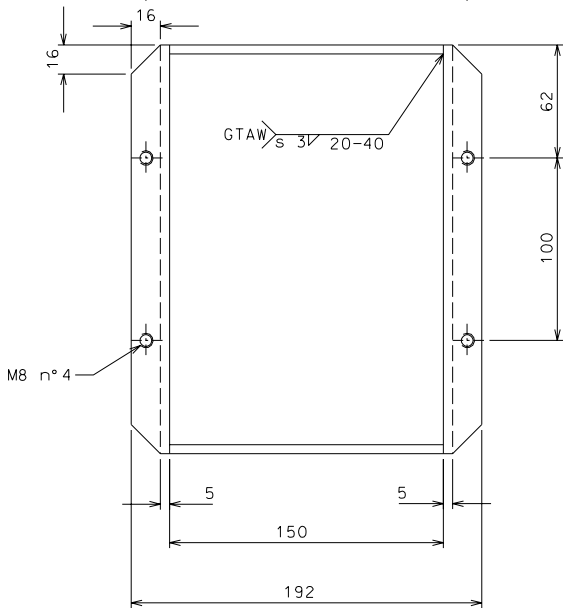


68



65



ref.	note	date	signature
modifications			
68	8	AISI 304 L	1/2
65	4	AISI 304 L	1/2
ref.	pieces	mat. and treatments	scale

General machining tolerances UNI 5307-63								
Dimensions	< 6	6-30	30-120	120-315	315-1000	>1000-2000	>2000-4000	>4000
Linear Toli.	±0.1	±0.2	±0.3	±0.5	±0.8	±1.2	±2	±3
angular Toli.	±1'	±30'	±20'	±10'				
designed for							referred to the shortest side	
LIGO PROJECT							R.De Salvo	
draw. by							G. Gennaro-PROMEC	
date							5-01-05	
title							scale	
HAM-OPTICAL BENCH							1/2	
DETAILS LVDT ACTUATOR							LIGO-D050129-00-D	
detail from							105	
							A 2	