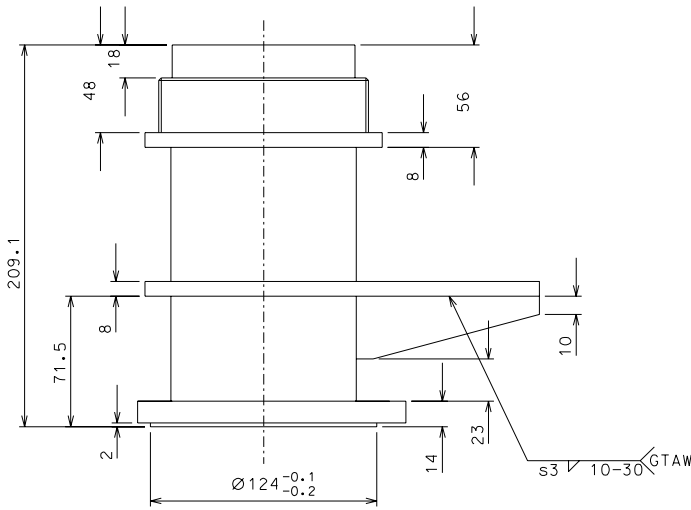
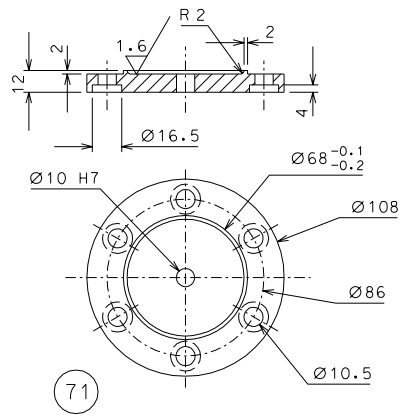


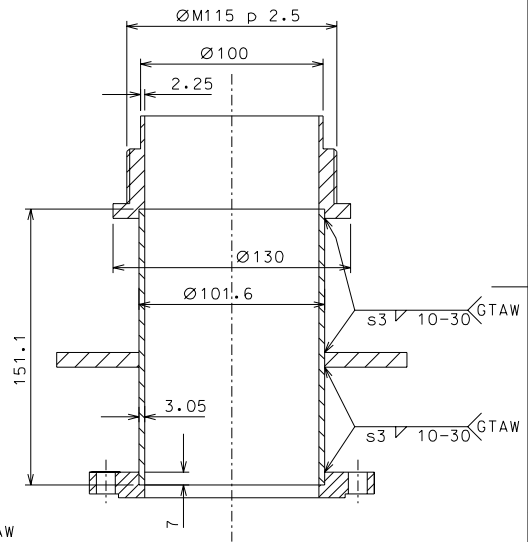
32



33



71



NOTE: The details 93 and 30 must be aligned and slip fit with the details 71, 67, 29

ref.	note	date	signature
modifications			
71	2	AISI 304	1/2
33	4	EN 6082	1/2
32	4	AISI 304 L	1/2
ref.	pieces	mat. and treatments	scale

General machining tolerances UNI 5307-63								
Dimensions	< 6	=6-30	>30-120	>120-315	=315-1000	>1000-2000	=2000-4000	>4000
linear Toli.	± 0.1	± 0.2	± 0.3	± 0.5	± 0.8	± 1.2	± 2	± 3
angular Toli.	± 1'	± 30'	± 20'	± 10' referred to the shortest side				
designed for							R.De Salvo	
draw. by							G. Gennaro-PROMECC	
date							9-01-05	scale 1/2
title							LIGO-D050138-01-D	
LIGO PROJECT							detail from 107 A 2	
HAM-OPTICAL BENCH							INVERTED PENDULUM	