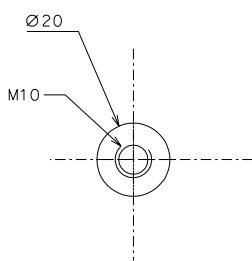
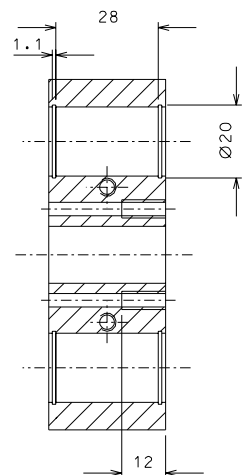
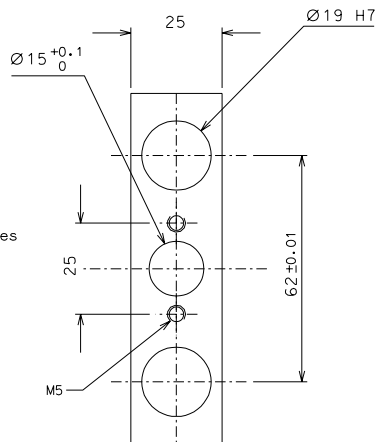
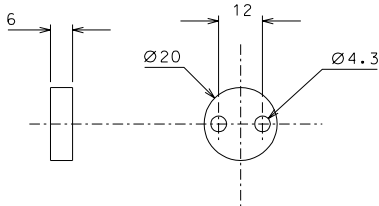
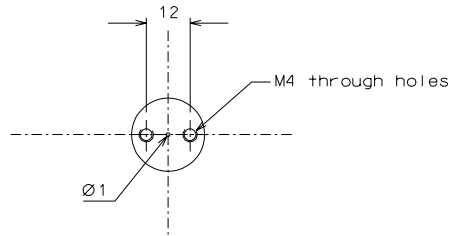
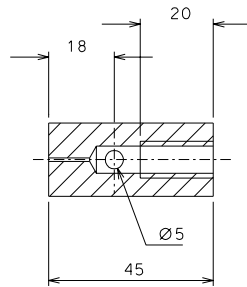


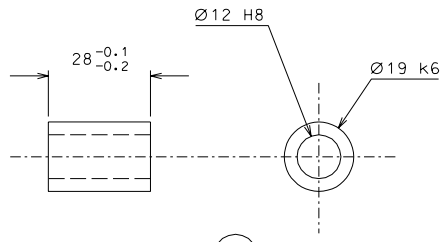
44



49

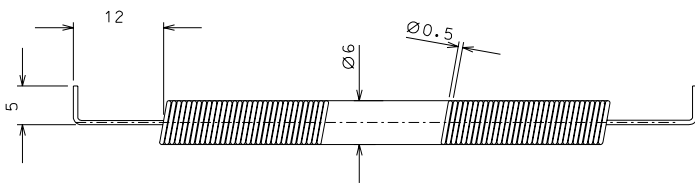


48



52

Note: Slip fit on part. 45 after assembly



76 N° 100 turns

ref.	note	date	signature
modifications			
76	12 inox	2/1	
52	8 peek 1000	1/1	
49	8 AISI 304	1/1	
48	8 AISI 304	1/1	
44	4 EN 6082	1/1	
ref.	pieces	mat. and treatments	scale

General machining tolerances UNI 5307-63								
Dimensions	< 6	> 6-30	> 30-120	> 120-315	> 315-1000	> 1000-2000	> 2000-4000	> 4000
Linear Toli.	± 0.1	± 0.2	± 0.3	± 0.5	± 0.8	± 1.2	± 2	± 3
angular Toli.	± 1'	± 30'	± 20'	referred to the shortest side				
designed for							R.De Salvo	
draw. by							G. Gennaro-PROMECA	
date							12-01-05	scale 1/1
title							LIGO-D050139-00-D	
HAM-OPTICAL BENCH							detail from 108-109	A 2
SLIDE								