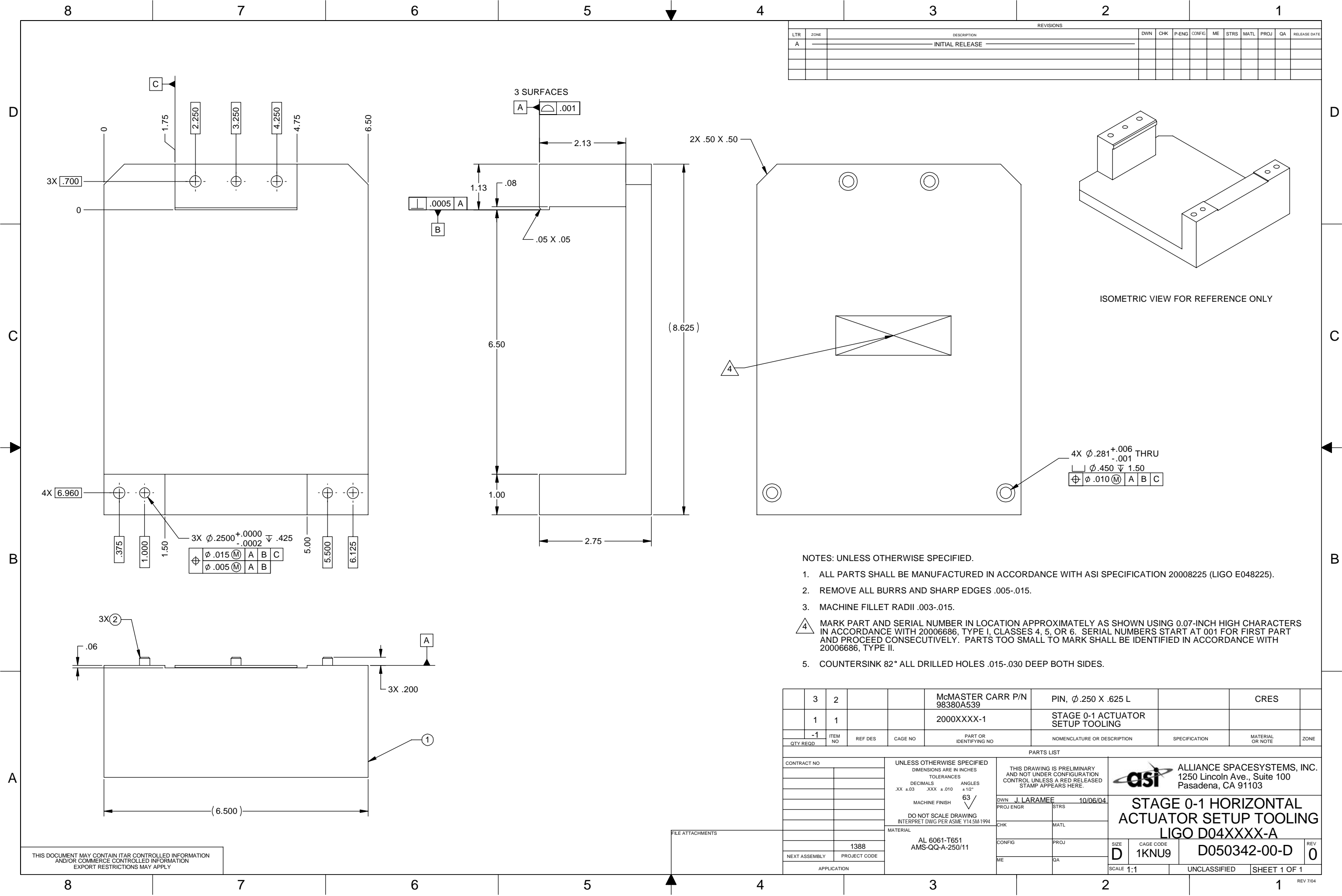


REVISIONS

LTR	ZONE	DESCRIPTION	DWN	CHK	P-ENG	CONFIG	ME	STRS	MATL	PROJ	QA	RELEASE DATE
A		INITIAL RELEASE										



ISOMETRIC VIEW FOR REFERENCE ONLY

NOTES: UNLESS OTHERWISE SPECIFIED.

- ALL PARTS SHALL BE MANUFACTURED IN ACCORDANCE WITH ASI SPECIFICATION 20008225 (LIGO E048225).
- REMOVE ALL BURRS AND SHARP EDGES .005-.015.
- MACHINE FILLET RADII .003-.015.
- MARK PART AND SERIAL NUMBER IN LOCATION APPROXIMATELY AS SHOWN USING 0.07-INCH HIGH CHARACTERS IN ACCORDANCE WITH 20006686, TYPE I, CLASSES 4, 5, OR 6. SERIAL NUMBERS START AT 001 FOR FIRST PART AND PROCEED CONSECUTIVELY. PARTS TOO SMALL TO MARK SHALL BE IDENTIFIED IN ACCORDANCE WITH 20006686, TYPE II.
- COUNTERSINK 82° ALL DRILLED HOLES .015-.030 DEEP BOTH SIDES.

QTY REQD	ITEM NO	REF DES	CAGE NO	PART OR IDENTIFYING NO	NOMENCLATURE OR DESCRIPTION	SPECIFICATION	MATERIAL OR NOTE	ZONE
	3	2		McMASTER CARR P/N 98380A539	PIN, ϕ .250 X .625 L		CRES	
	1	1		2000XXXX-1	STAGE 0-1 ACTUATOR SETUP TOOLING			
-1								

CONTRACT NO		UNLESS OTHERWISE SPECIFIED		THIS DRAWING IS PRELIMINARY AND NOT UNDER CONFIGURATION CONTROL UNLESS A RED RELEASED STAMP APPEARS HERE.		ALLIANCE SPACESYSTEMS, INC.	
		DIMENSIONS ARE IN INCHES	TOLERANCES	DWN	J. LARAMEE	10/06/04	1250 Lincoln Ave., Suite 100
		DECIMALS .XX \pm .03	ANGLES \pm .12°	PROJ ENGR	STRS		Pasadena, CA 91103
		XXX \pm .010	MACHINE FINISH 63	CHK	MATL		STAGE 0-1 HORIZONTAL ACTUATOR SETUP TOOLING
			DO NOT SCALE DRAWING INTERPRET DWG PER ASME Y14.5M-1994	CONFIG	PROJ		LIGO D04XXXX-A
			MATERIAL AL 6061-T651 AMS-QQ-A-250/11	ME	QA		SIZE D
							CAGE CODE 1KNU9
							D050342-00-D
							REV 0
							SCALE 1:1
							UNCLASSIFIED
							SHEET 1 OF 1

THIS DOCUMENT MAY CONTAIN ITAR CONTROLLED INFORMATION AND/OR COMMERCE CONTROLLED INFORMATION EXPORT RESTRICTIONS MAY APPLY