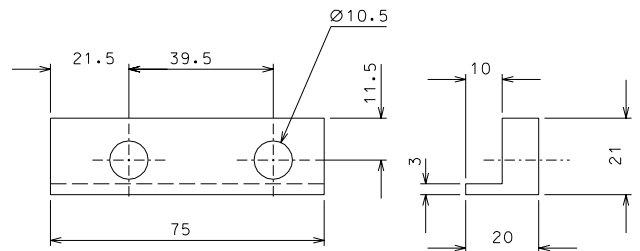
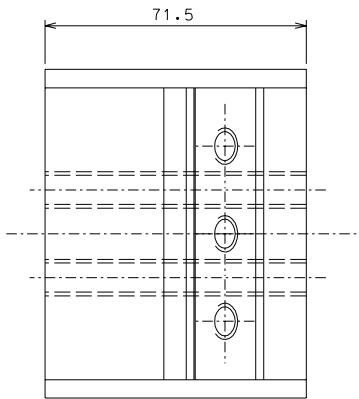
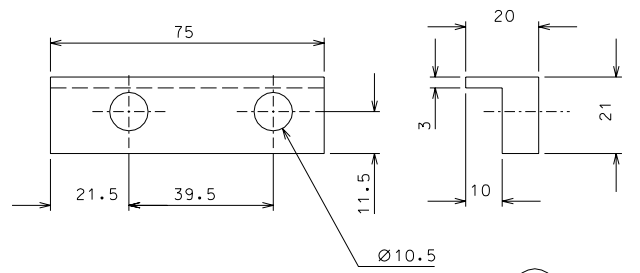
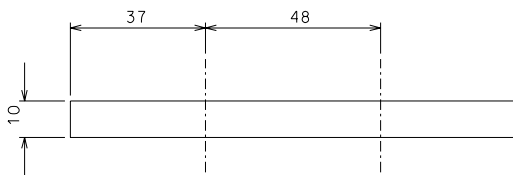


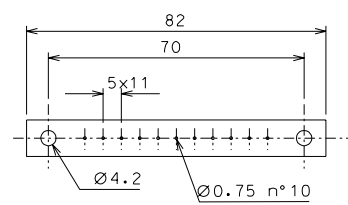
26



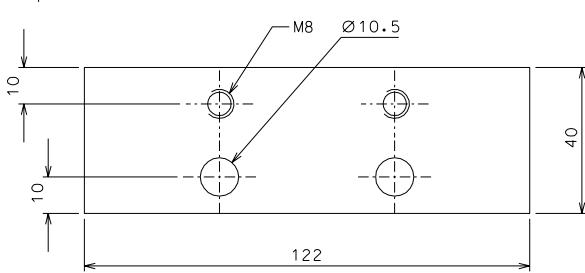
27



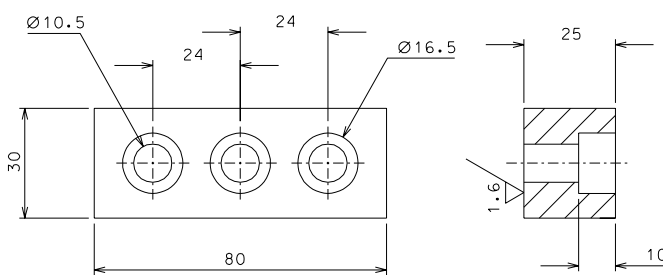
28



72



24 nickel flashing



21

ref.	note	date	signature
modifications			
28	8 AISI 304	1/1	
27	32 AISI 304	1/1	
26	32 AISI 304	1/1	
24	32 Fe 360	1/1	
21	32 AISI 304	1/1	
72	8 peek 1000	1/1	
ref.	pieces	mat. and treatments	scale

General machining tolerances UNI 5307-63								
Dimensions	< 6	6-30	30-120	120-315	315-1000	>1000-2000	>2000-4000	>4000
Linear Toli.	± 0.1	± 0.2	± 0.3	± 0.5	± 0.8	± 1.2	± 2	± 3
angular Toli.	± 1'	± 30'	± 20'	± 10' referred to the shortest side				

designed for		R.De Salvo	
draw. by		G. Gennaro-PROMECC	
date	30-12-04	scale	1/1
title		HAM-OPTICAL BENCH	
DETAILS FILTER		LIGO-D051123-00-D	
detail from	105-106	sheet	A 2