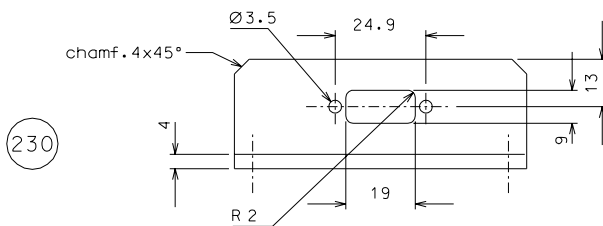
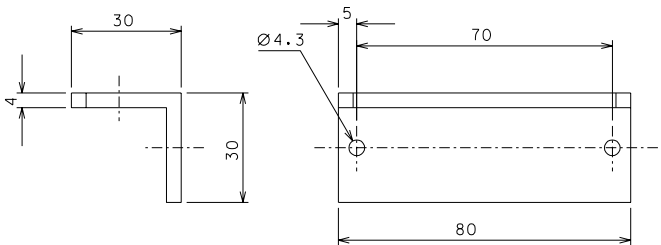


11 silver plated

Note for 19: Forced with light press fit into detail 17 after cleaning and before coiling



230



added holes (encapsuled)	31-08-06		
modified part 230	06-07-06		
modified part 19	12-06-06		
modified part 230	26-05-06		
ref.	note	date	signature
modifications			
230	4	AISI 304	1/1
20	64	EN 6082	1/1
19	4	AISI 304	1/1
12	4	EN 6082	1/1
11	4	AISI 316	1/1
ref.	pieces	mat. and treatments	scale
ref.	pieces	mat. and treatments	scale

General machining tolerances UNI 5307-63						
Dimensions	< 6	= 6-30	> 30-120	> 120-315	> 315-1000	> 1000-2000
linear Toli.	± 0.1	± 0.2	± 0.3	± 0.5	± 0.8	± 1.2
angular Toli.	± 1'	± 30'	± 20'	± 10' referred to the shortest side		
designed for R.De Salvo						
draw. by G. Gennaro-PROME						
date 2-01-05						
scale 1/1						
title HAM-OPTICAL BENCH						
DETAILS FILTER						
detail from 106						A 2