

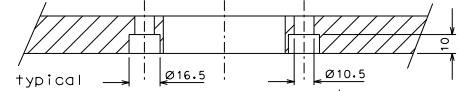
typical

NOTE-1: Prototype LASTI built with EN 5083
 NOTE-2: Added countsinking for 64 filter screw holes and 8 IP screw holes

modified with encapsulated dimension	31-08-06
added holes to move damper position	06-07-06
see note-2	30-06-06
modified holes from 300 to 450mm	17-06-06

ref.	description	date	signature
modifications			

General machining tolerances UNI 5101-85 dimensions: ± 0.1 ± 0.2 ± 0.3 ± 0.4 ± 0.5 ± 0.6 ± 0.7 ± 0.8 ± 0.9 ± 1.0 linear fall: ± 0.1 ± 0.2 ± 0.3 ± 0.4 ± 0.5 ± 0.6 ± 0.7 ± 0.8 ± 0.9 ± 1.0 angular fall: $\pm 1'$ $\pm 30'$ $\pm 20'$ $\pm 10'$ related to the shortest side		designed by R. De Salvo drawn by G. Gennaro-PROMEC date 2-01-05 scale 1/4
LIGO PROJECT HAM-OPTICAL BENCH SUSPENSION FILTERS		LIGO-D051127-07-0 scale 100 A 1



typical