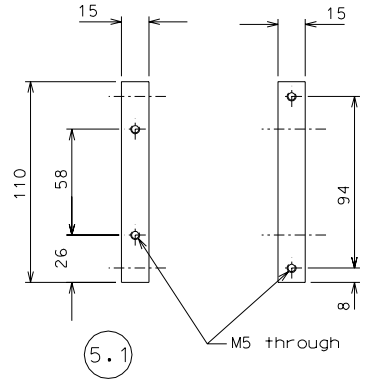
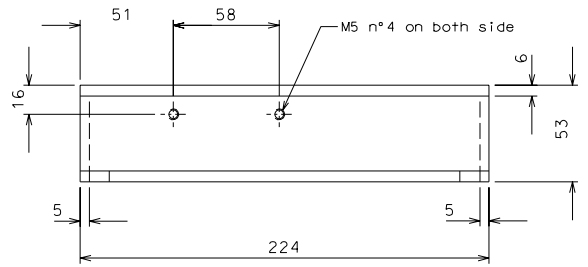
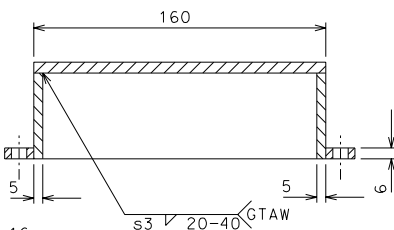


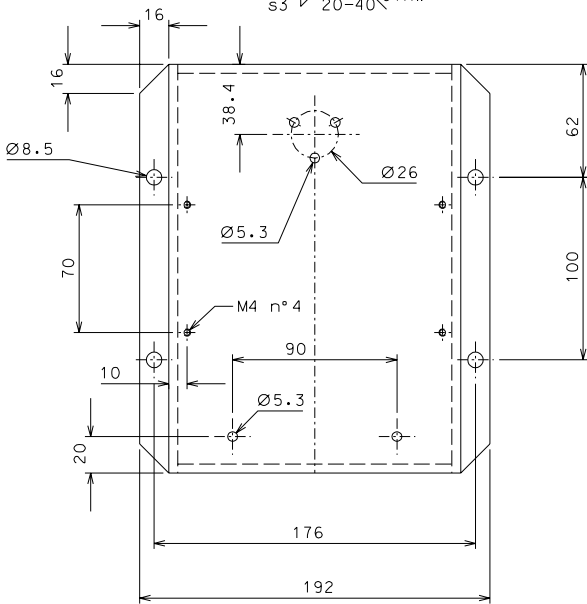
5



5.1



6



ref.	note	date	signature
modifications			
6	4	AISI 304 L	1/2
5.1	8	AISI 304 L	1/2
5	4	AISI 304 L	1/2
ref.	pieces	mat. and treatments	scale

General machining tolerances UNI 5307-63								
Dimensions	< 6	=6-30	>30-120	>120-315	>315-1000	>1000-2000	>2000-4000	>4000
Linear Toli.	± 0.1	± 0.2	± 0.3	± 0.5	± 0.8	± 1.2	± 2	± 3
angular Toli.	± 1'	± 30'	± 20'	± 10'				

referred to the shortest side

designed for	R.De Salvo	
draw. by	G. Gennaro-PROMECC	
date	5-01-05	scale 1/2
title	HAM-OPTICAL BENCH	
ref. from	LIGO-D051130-00-D	detail 105
		A 2