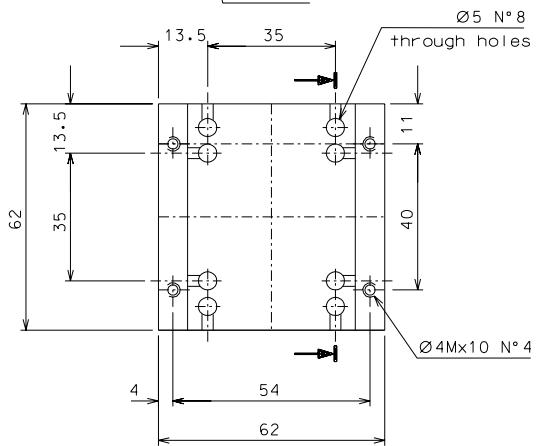
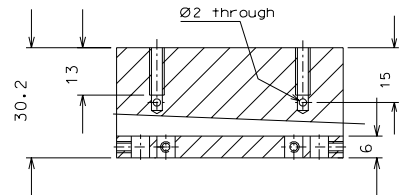


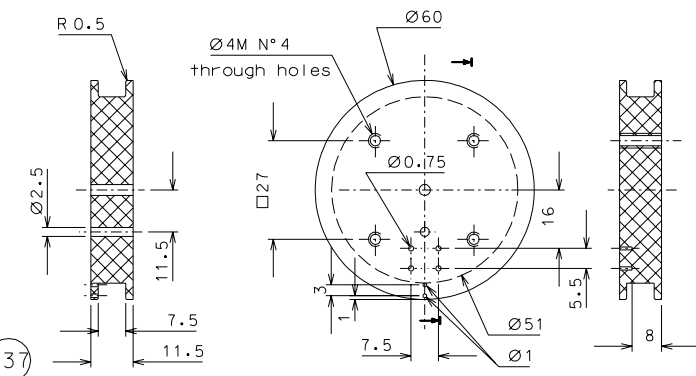
133



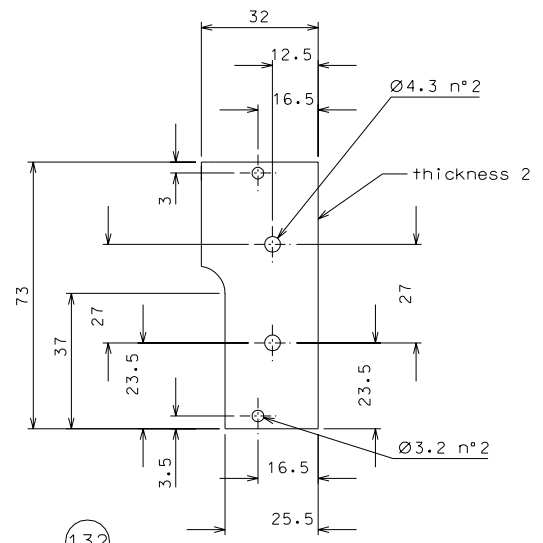
135



137



Secondary coil: wire 38-AWG, 430 turns.
Use only kapton insulated wires approved
by LIGO, all other kinds of enamel are
forbidden.



132

added thickness detail 132				07-04-06				
ref.	note			date	signature			
modifications								
137	8	peek 1000	1:1					
135	4	EN 6082	1:1					
133	8	EN 6082	1:1					
132	16	EN 6082	1:1					
ref.	pieces	mat. and treatments	scale	ref.	pieces	mat. and treatments	scale	
General machining tolerances UNI 5307-63								
Dimensions	< 6	> 6-30	> 30-120	> 120-315	> 315-1000	> 1000-2000	> 2000-4000	> 4000
Linear Toli.	± 0,1	± 0,2	± 0,3	± 0,5	± 0,8	± 1,2	± 2	± 3
Angular Toli.	± 1'	± 30'	± 20'	± 10'				referred to the shortest side
designed for				R.De Salvo				
draw. by				G. Gennaro-PROMECC				
date				6-01-05		scale 1/1		
title				HAM-OPTICAL BENCH				
				LIGO-D051131-01-D				
				detail from		112 A 2		