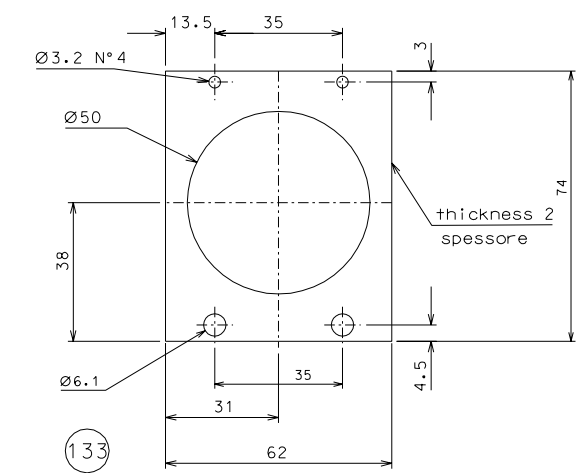
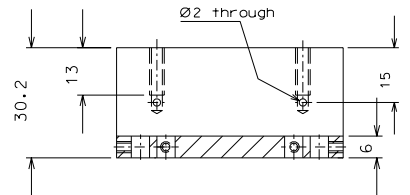
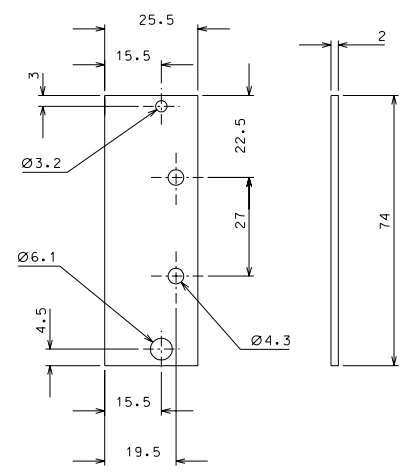


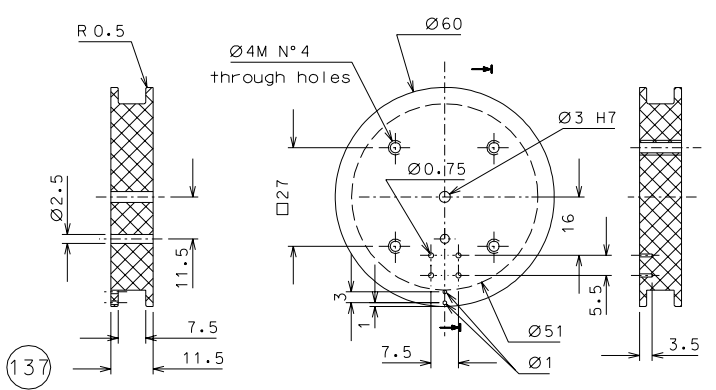
135



133



132



137

Secondary coil: wire 38-AWG, 430 turns.
Use only kapton insulated wires approved
by LIGO, all other kinds of enamel are
forbidden.

modified parts 132-133		05-09-06	
added missing dimension		10-05-06	
added thickness detail 132		07-04-06	
ref.	note	date	signature
modifications			
137	8 peek 1000	1:1	
135	4 EN 6082	1:1	
133	8 EN 6082	1:1	
132	16 EN 6082	1:1	
ref.	pieces	mat. and treatments	scale
ref.	pieces	mat. and treatments	scale

General machining tolerances UNI 5307-63						
Dimensions	< 6	> 6-30	> 30-120	> 120-315	> 315-1000	> 1000-4000
Linear Toli.	± 0.1	± 0.2	± 0.3	± 0.5	± 0.8	± 1.2
Angular Toli.	± 1'	± 30'	± 20'	± 10' referred to the shortest side		

	designed for R.De Salvo draw. by G. Gennaro-PROMEC	
	date 6-01-05	scale 1/1
title HAM-OPTICAL BENCH LVDT		data ¹ LIGO-D051131-03-D
from 112		A 2