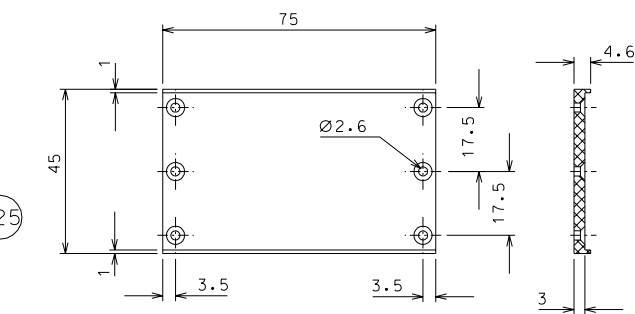
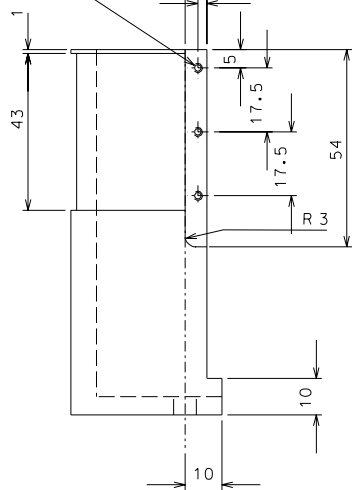
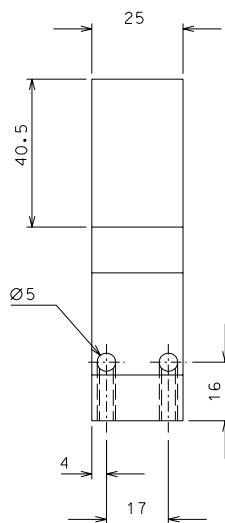


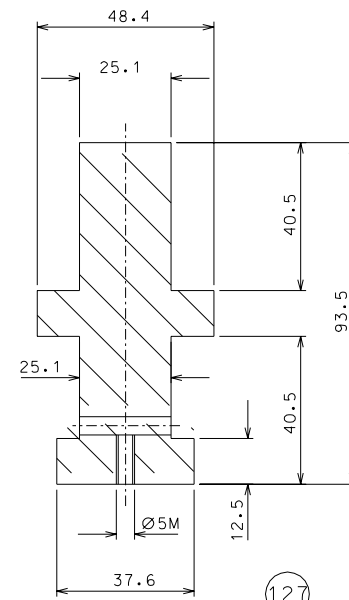
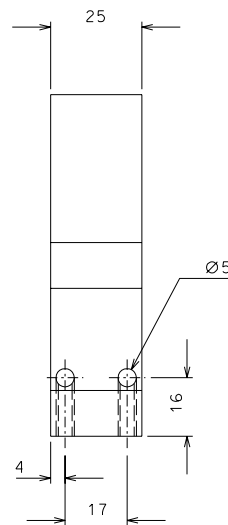
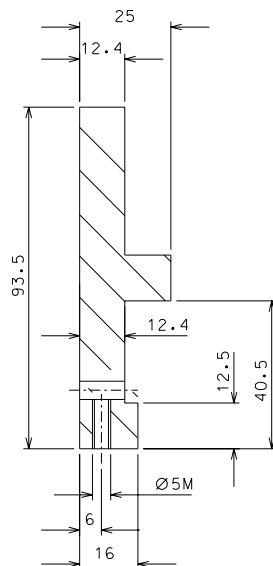
128



125



126



127

ref.	note	date	signature
modifications			
128	8 AISI 304	1:1	
127	4 ARMCO steel	1:1	
126	8 "	1:1	
125	8 peek 1000	1:1	
ref.	pieces	mat. and treatments	scale

General machining tolerances UNI 5307-63								
Dimensions	< 6	> 6-30	> 30-120	> 120-315	> 315-1000	> 1000-2000	> 2000-4000	> 4000
Linear Toli.	± 0.1	± 0.2	± 0.3	± 0.5	± 0.8	± 1.2	± 2	± 3
Angular Toli.	± 1'	± 30'	± 20'	± 10' referred to the shortest side				

designed for <b>R.De Salvo</b>	
draw. by <b>G. Gennaro-PROMEC</b>	scale 1/1
date 6-01-05	scale 1/1
title <b>HAM-OPTICAL BENCH ACTUATOR</b>	
date <sup>1</sup> from 111	A 2