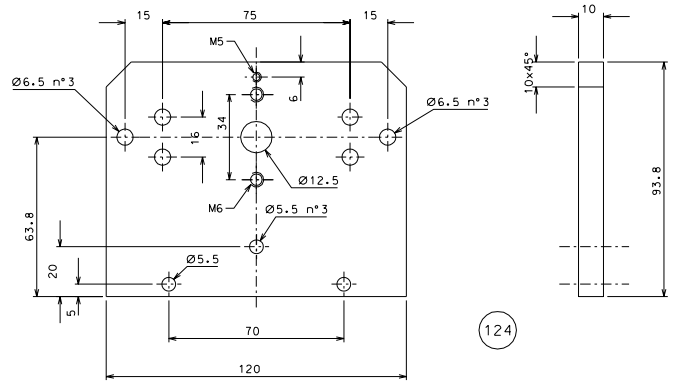
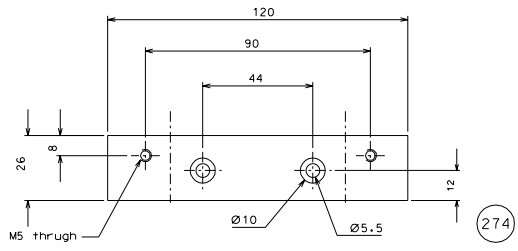


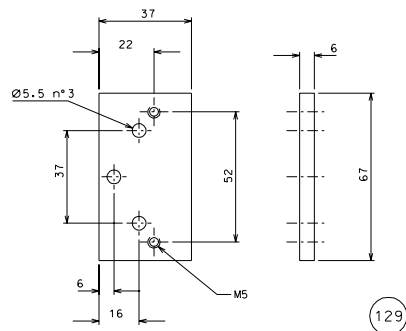
272



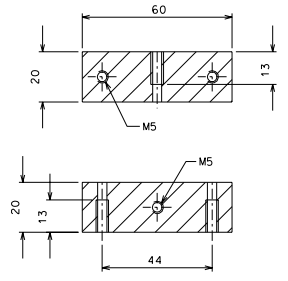
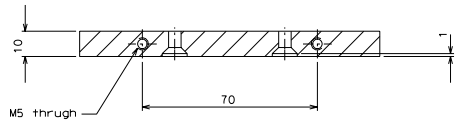
124



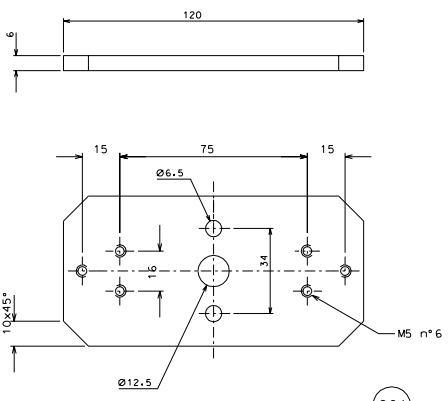
274



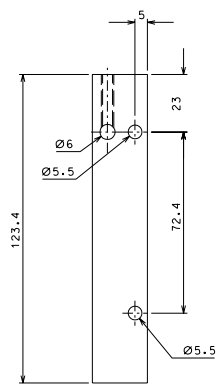
129



275



281



273

modified dimension part 274	26-09-06	
modified holes in part 124	25-09-06	
added winding plate	14-09-06	
total changement	06-09-06	
ref.	date	signature
none		

modifications					
ref.	date	signature	description	date	signature
274	4	EN 6082	1/1		
273	8	EN 6082	1/1		
272	4	EN 6082	1/1		
129	4	EN 6082	1/1	281	4
124	4	EN 6082	1/1	275	4
ref.	date	signature	description	date	signature

General machining tolerances UNI 5301-43								
Dimension	< 6	6-30	30-120	120-315	315-1000	>1000-2000	>2000-4000	> 4000
Linear dim.	±0.1	±0.2	±0.3	±0.5	± 0.8	± 1.2	± 2	± 3
Angular dim.	± 1'	± 30'	± 20'	refered to the nearest side				

designed by	R.De Salvo
drawn by	G. Gennaro-PROMECC
date	06-09-06
scale	1/1
title	HAM-OPTICAL BENCH
part	ACTUATOR
sheet	111
total	A 1