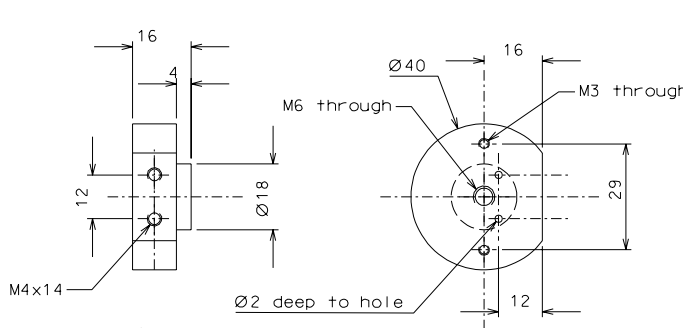
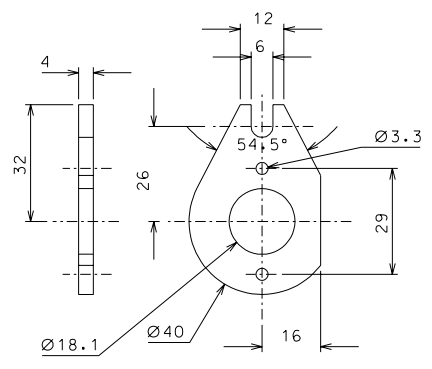


60

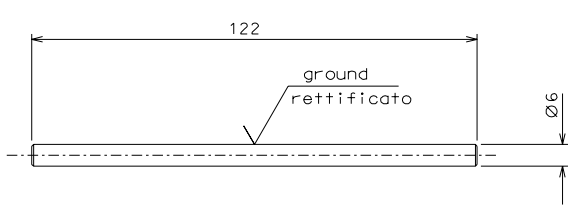
61



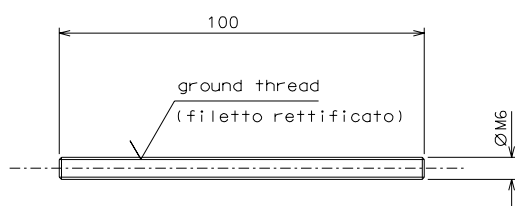
54



56



55



53

		modified detail 61		05-07-06			
		modified detail 60		09-04-06			
		modified holes of motor		04-02-06			
ref.		note		date			signature
modifications							
60	4	AISI 304	1/1				
56	4	bronze B14	1/1				
55	4	inox	1/1				
54	4	peek 1000	1/1				
53	4	inox	1/1	61	4	EN 6082	1/1
ref.	pieces	mat. and treatments	scale	ref.	pieces	mat. and treatments	scale

General machining tolerances UNI 5307-63								
Dimensions	< 6	= 6-30	> 30-120	> 120-315	> 315-1000	> 1000-2000	> 2000-4000	> 4000
Linear Toli.	± 0.1	± 0.2	± 0.3	± 0.5	± 0.8	± 1.2	± 2	± 3
angular Toli.	± 1'	± 30'	± 20'	± 10' referred to the shortest side				
designed for				R.De Salvo				
draw. by				G. Gennaro-PROMEC				
date				13-01-05				
scale				1/1				
title				HAM-OPTICAL BENCH				
MOTORIZED VERTICAL SPRING				LIGO-D051140-03-D				
ref. from				109				
				A 2				