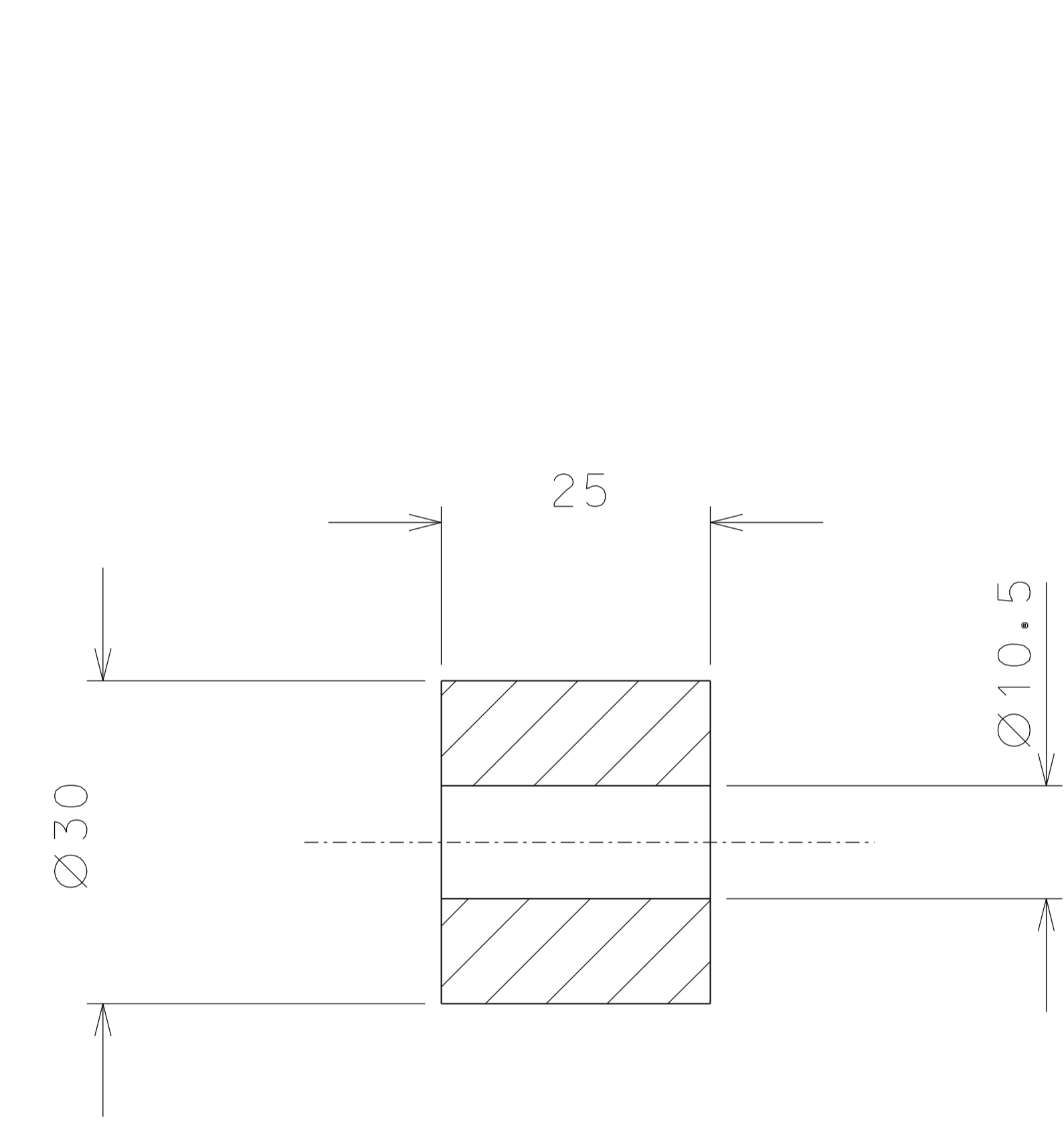
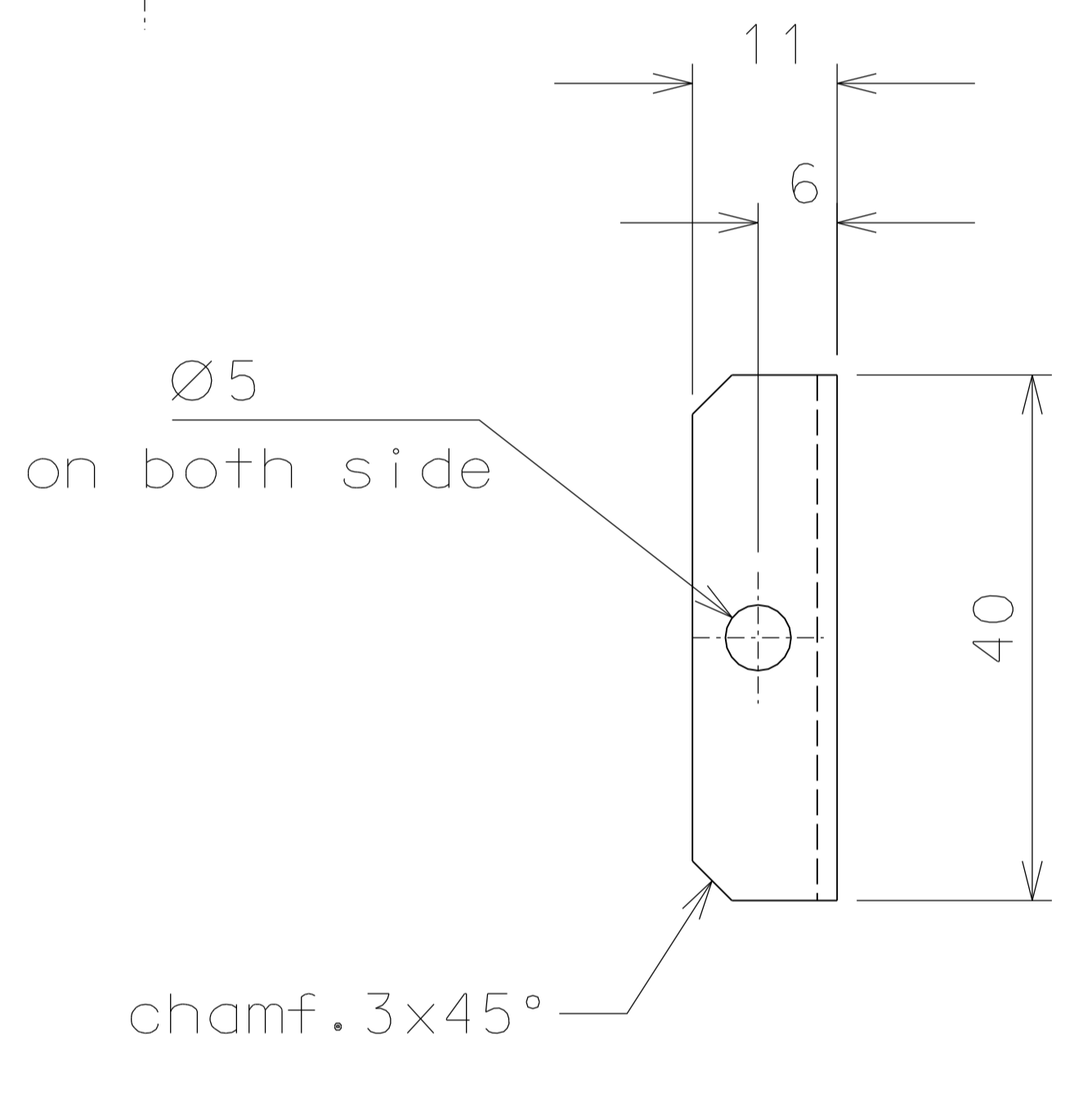


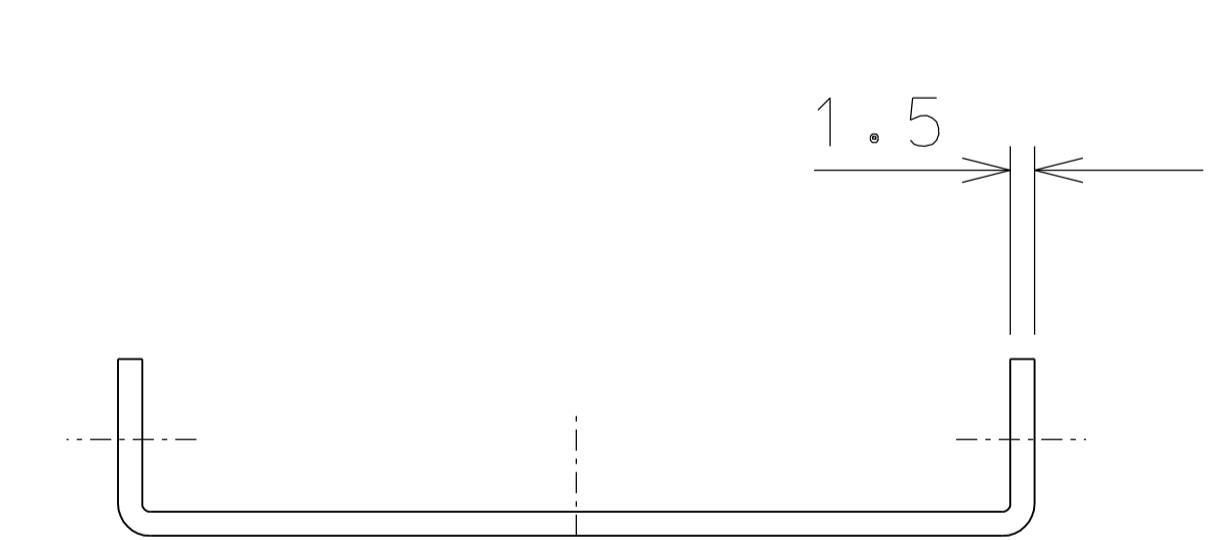
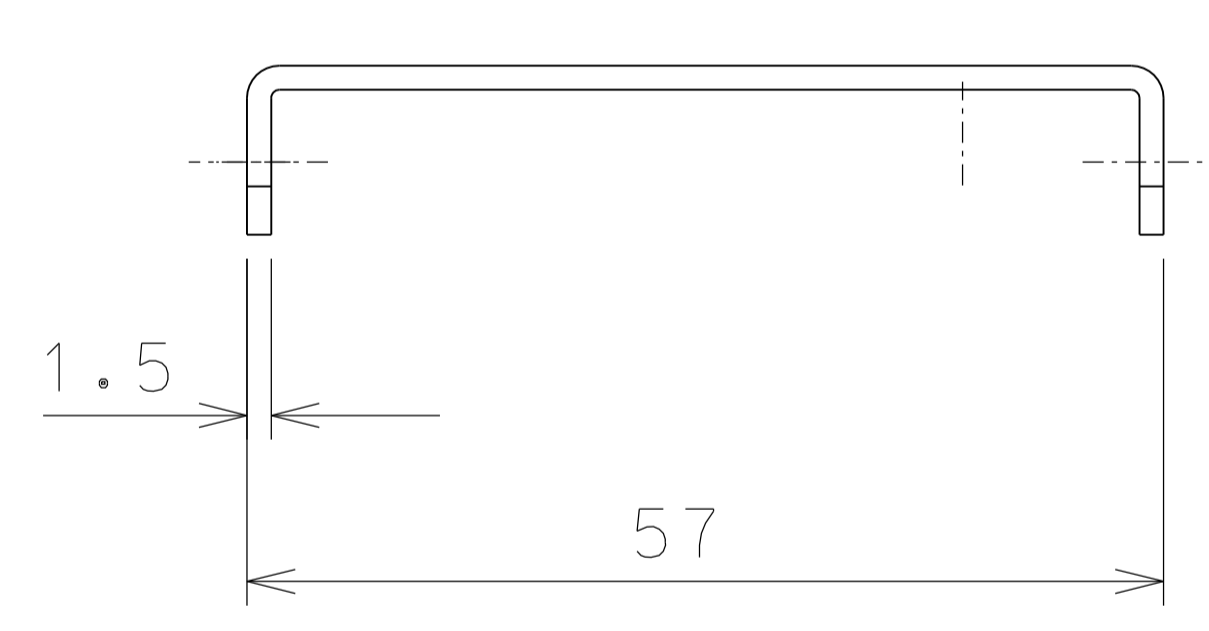
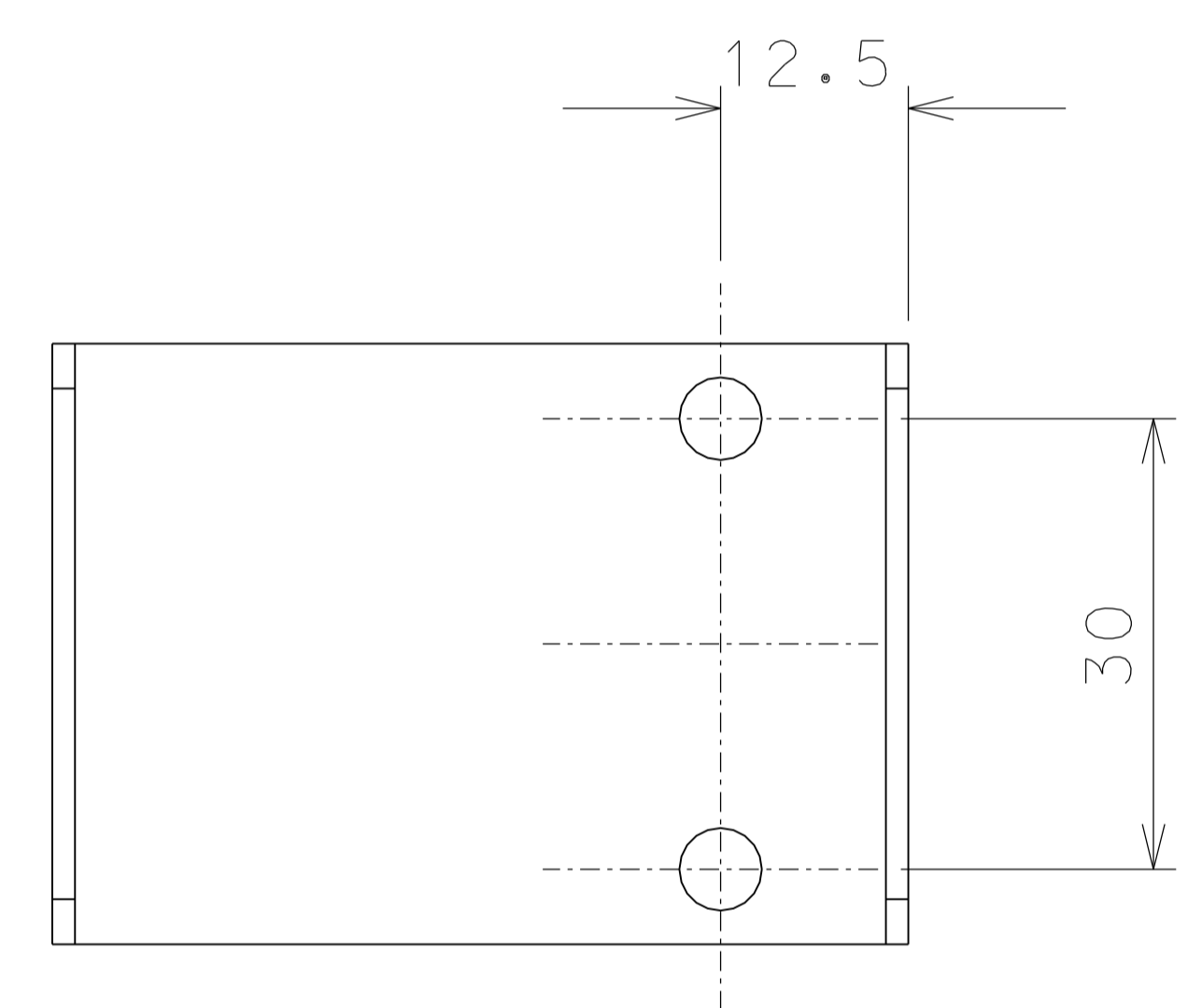
69



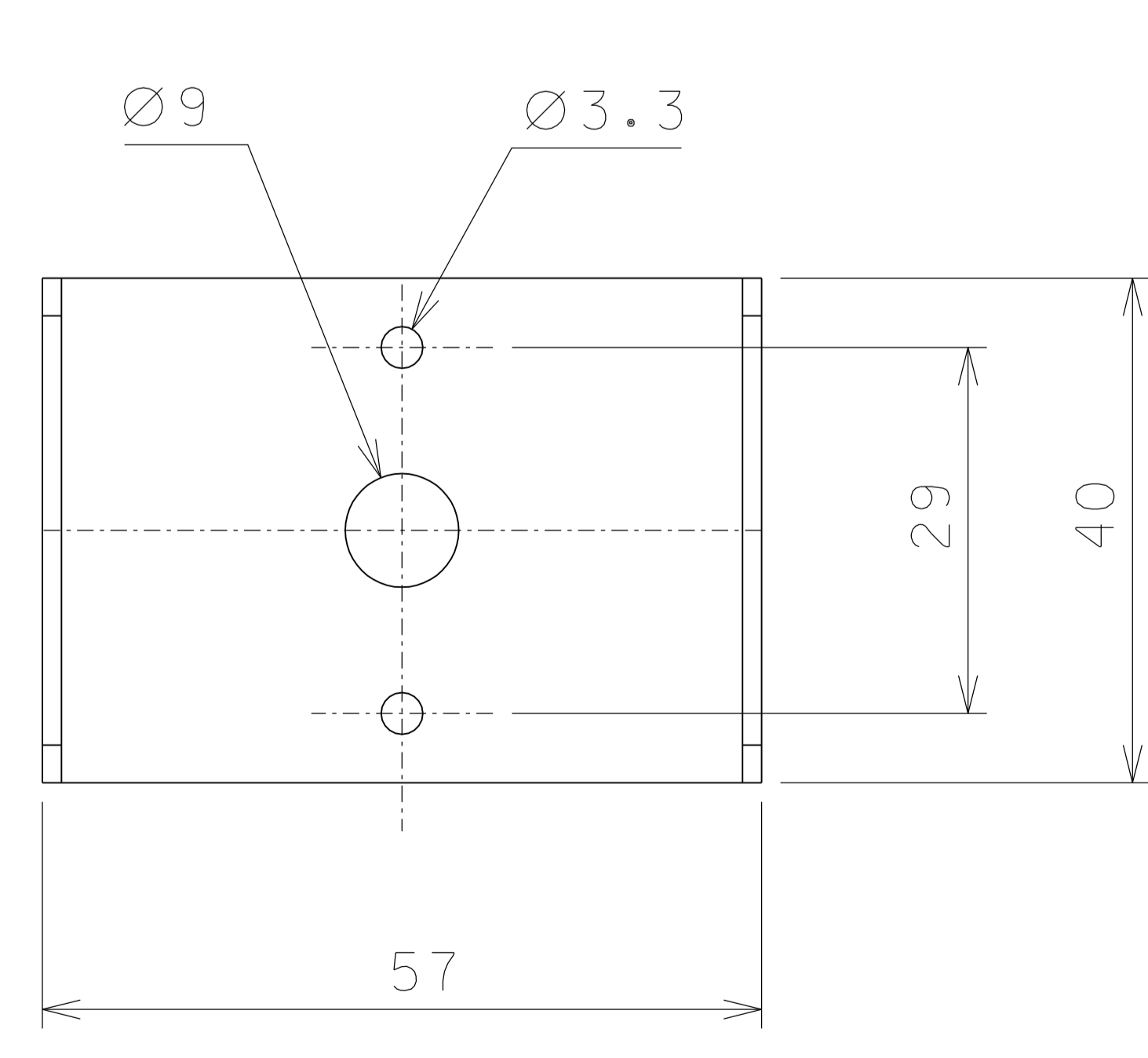
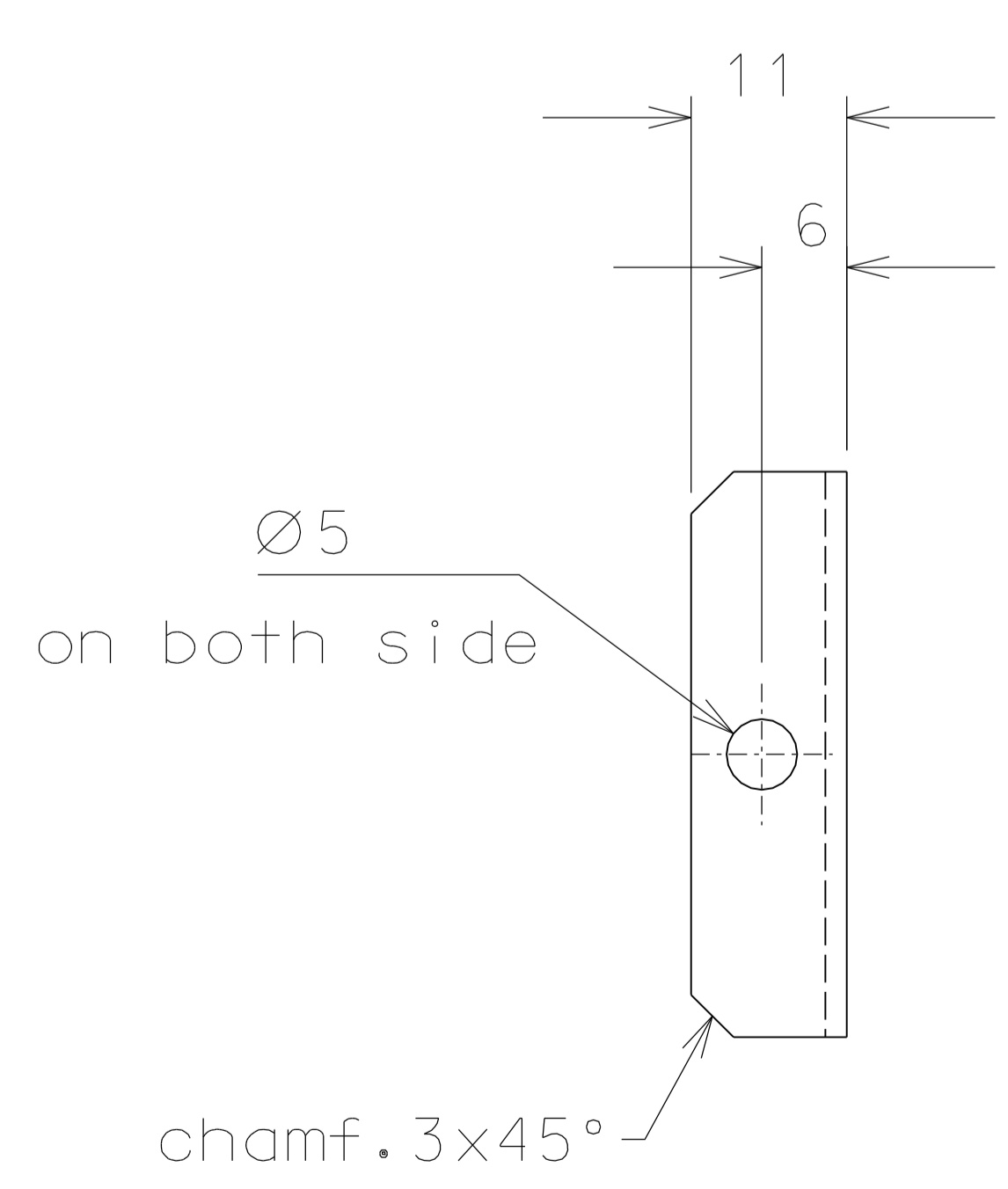
70



57



AS IS



59

		modified parts 57-59	14-11-06				
		modified det. 69	5-02-06				
		modified det. 57-69	15-01-06				
ref.		note	date	signature			
modifications							
70	8	EN 6082	1/1				
69	4	EN 6082	1/1				
59	4	AISI 304	2/1				
57	4	AISI 304	2/1				
ref.	pieces	mat. and treatments	scale	ref.	pieces	mat. and treatments	scale

General machining tolerances UNI 5307-63								
Dimensions	< 6	> 6-30	> 30-120	> 120-315	> 315-1000	> 1000-2000	> 2000-4000	> 4000
Linear Toll.	± 0.1	± 0.2	± 0.3	± 0.5	± 0.8	± 1.2	± 2	± 3
angular Toll.	± 1	± 30'	± 20'	± 10' referred to the shortest side				
designed for				R.De Salvo				
draw. by				G.Gennaro-PRMEC				
date				13-01-05				
scale				1/1				
title				LIGO PROJECT				
title				HAM-OPTICAL BENCH				
title				MOTORIZED VERTICAL SPRING				
detail from				109-208		A 2		