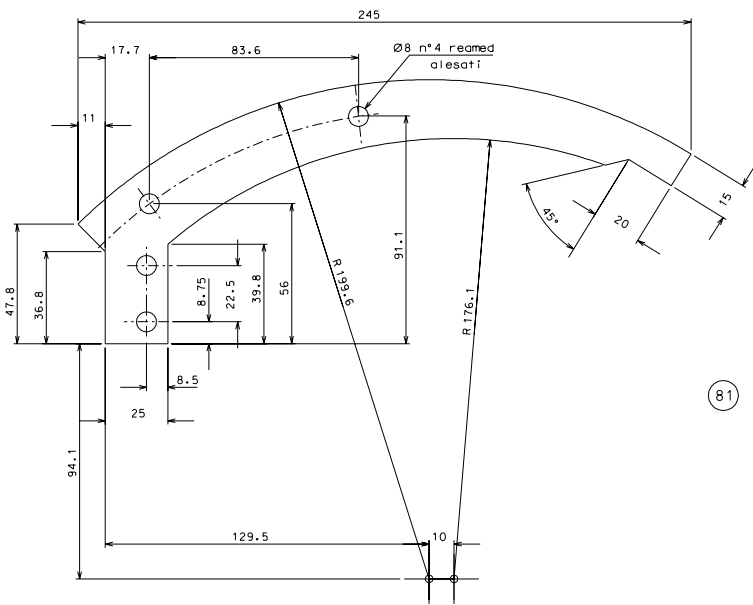
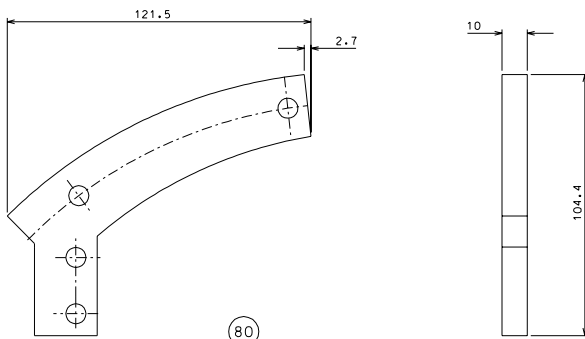
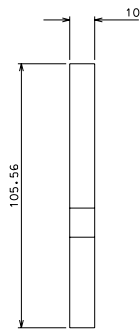


78



81



80

copy the missing dimensions from detail 81

rev.	none	date	signature					
modifications								
81	2	EN 6082	1/1					
80	4	EN 6082	1/1					
78	2	AISI 304	1/1					
ref.	pieces	mat. and treatments	costs					
General machining tolerances UNI 5307-63								
Dimension	< 6	6-10	10-120	120-315	315-1000	1000-2000	2000-4000	> 4000
Linear tol.	± 0.1	± 0.2	± 0.3	± 0.5	± 0.8	± 1.2	± 2	± 3
Angular tol.	± 1'	± 30'	± 20'	± 10'	refered to the shortest side			
designed by				R.De Salvo				
checked by				G. Gennaro-PROMECC				
date				28-01-05				
scale				1/1				
Title				LIGO PROJECT				
DETAIL MOUNTING BLADE				LIGO-D051145-00-D				
sheet				144				
A				1				