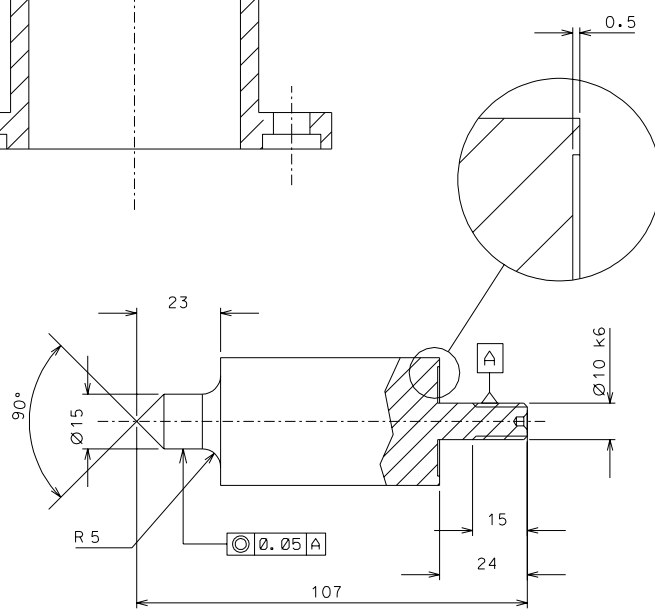
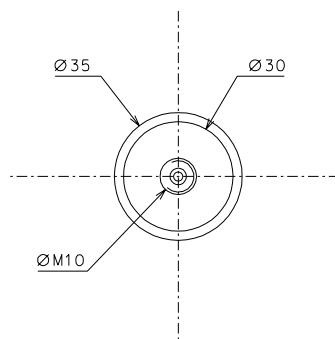


see drawing 027 (2)

(39) see drawing 037

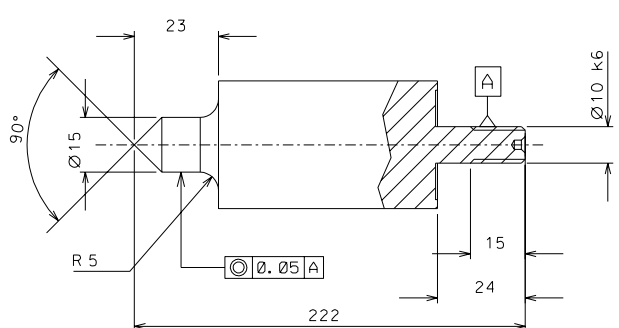
(93)

(29) see drawing 035



(93) nickel plated

NOTE: The details 93 and 30 must be aligned and slip fit with the details 71, 67, 29
 Note: Lock screws to align part 2 with part 4



(93.1) nickel plated

ref.	pieces	mat. and treatments	scale	ref.	pieces	mat. and treatments	scale
93.1	4	C40	1/1				
93	4	C40	1/1				

General machining tolerances UNI 5307-63								
Dimensions	< 6	>=6-30	>=30-120	>=120-315	>=315-1000	>=1000-2000	>=2000-4000	>=4000
Linear Toli.	±0.1	±0.2	±0.3	±0.5	±0.8	±1.2	±2	±3
angular Toli.	±1	±30'	±20'	referred to the shortest side				

designed for	R.De Salvo	
draw. by	G. Gennaro-PROMECC	
date	29-01-05	scale 1/1
title	HAM-OPTICAL BENCH MOUNTING TOP PLATE TOOL	
detail from	LIGO-D051148-00-D	A 2