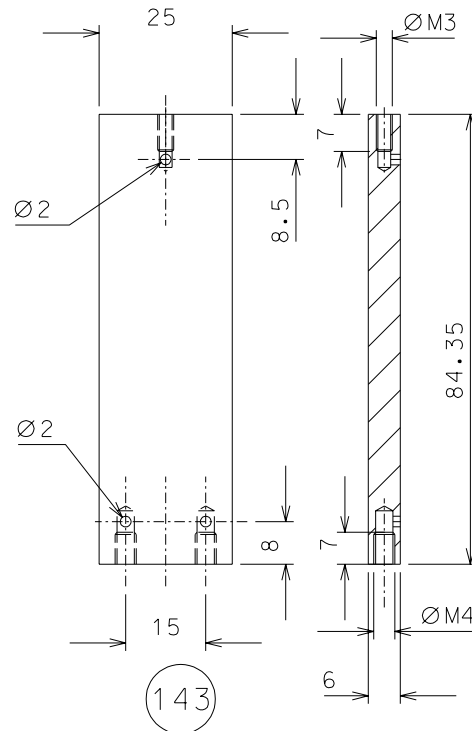
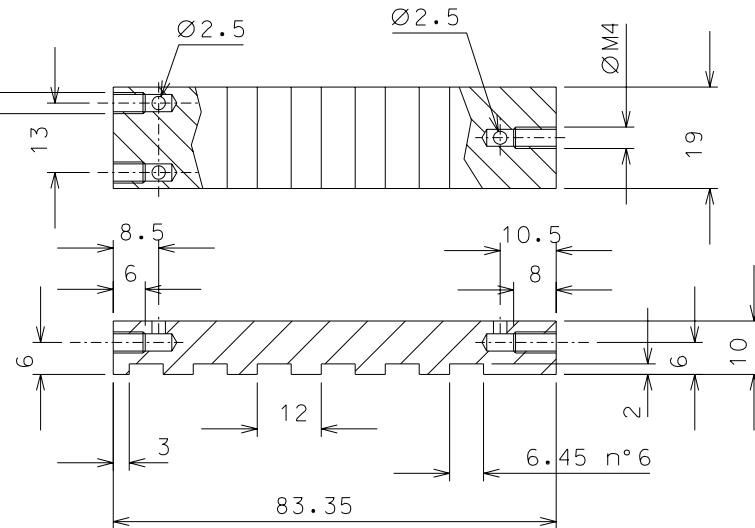


146



143

142



		n° parts for 1 unit		08-04-06			
		modified detail 142		26-01-06			
ref.		note		date		signature	
modifications							
146	1	ARMCO steel	1/1				
143	8	EN 1050 H24	1/1				
142	8	ARMCO steel	1/1				
ref.	pieces	mat. and treatments	scale	ref.	pieces	mat. and treatments	scale

General machining tolerances UNI 5307-63								
Dimensions	< 6	>6-30	>30-120	>120-315	>315-1000	>1000-2000	>2000-4000	>4000
linear Toll.	± 0.1	± 0.2	± 0.3	± 0.5	± 0.8	± 1.2	± 2	± 3
angular Toll.	± 1	± 30'	± 20'	± 10' referred to the shortest side				
				<b>LIGO PROJECT</b>		designed for <b>R.De Salvo</b>		
title <b>HAM-OPTICAL BENCH</b>				<b>MAGNETIC DAMPER</b>		draw. by <b>G. Gennaro-PRMEC</b>		
						date 20-10-05		scale 1/1
LIGO-D051172-02-D						detail from 166		A 3