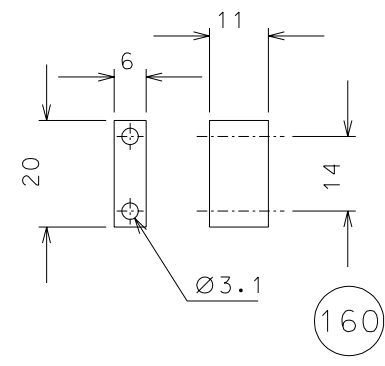


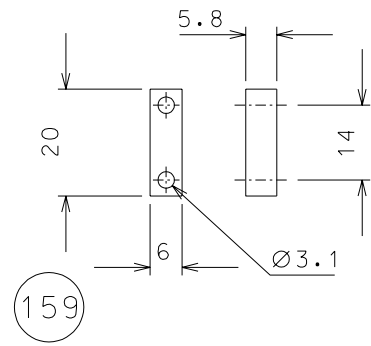
161

thick 0.2

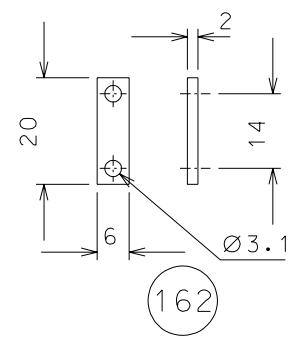
R 1.5



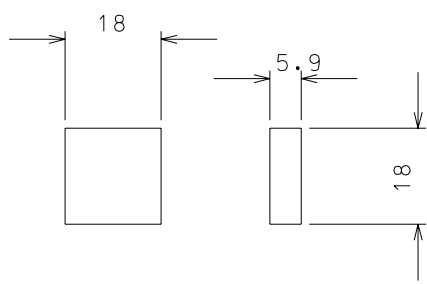
160



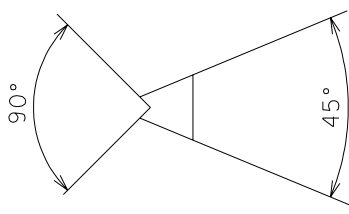
159



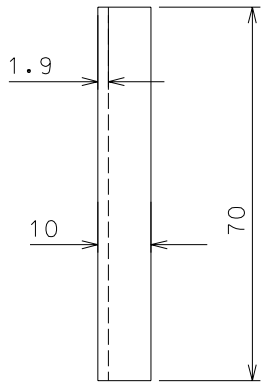
162



146.1



146.2



added and modified details				6-03-06			
ref.	note			date	signature		
modifications							
146.1	2	EN 6082	1/1				
162	64	AISI 304	1/1				
161	32	spring steel	1/1				
160	16	AISI 304	1/1				
159	16	AISI 304	1/1	146.2	2	ertalon	1/1
ref.	pieces	mat. and treatments	scale	ref.	pieces	mat. and treatments	scale

General machining tolerances UNI 5307-63								
Dimensions	< 6	> 6-30	> 30-120	> 120-315	> 315-1000	> 1000-2000	> 2000-4000	> 4000
linear Toll.	± 0.1	± 0.2	± 0.3	± 0.5	± 0.8	± 1.2	± 2	± 3
angular Toll.	± 1	± 30'	± 20'	± 10' referred to the shortest side				
				LIGO PROJECT		designed for R.De Salvo		
title HAM-OPTICAL BENCH				draw. by G. Gennaro-PROMECC		date 24-10-05		scale 1/1
MAGNETIC DAMPER GR. 8				LIGO-D051173-01-D				
				detail from 166		A 3		