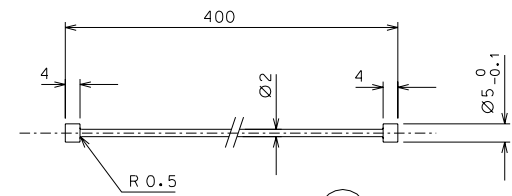
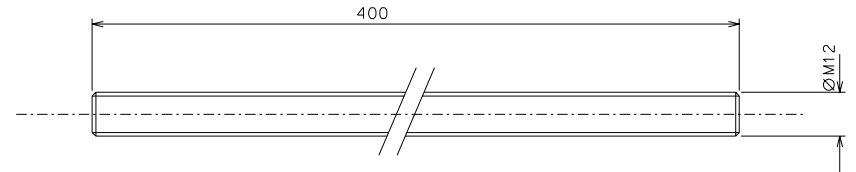


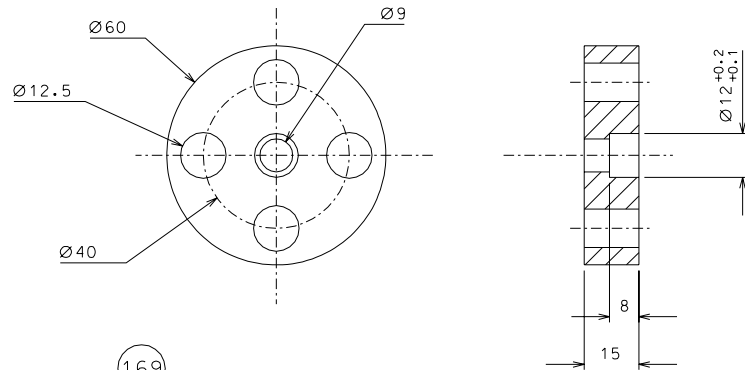
171



186



173



169

ref.	note	date	signature
modifications			
186	2	maraging	1/1
173	1	steel	1/1
171	16	EN 6082	1/1
169	1	AISI 304	1/1
ref.	pieces	mat. and treatments	scale

General machining tolerances UNI 5307-63								
Dimensions	< 6	> 6-30	> 30-120	> 120-315	> 315-1000	> 1000-2000	> 2000-4000	> 4000
Linear Toli.	± 0,1	± 0,2	± 0,3	± 0,5	± 0,8	± 1,2	± 2	± 3
angular Toli.	± 1'	± 30'	± 20'	± 10' referred to the shortest side				

	designed for	R.De Salvo	
	draw. by	G. Gennaro-PROMECA	
	date	27-10-05	scale
			1/1
title <b>HAM-OPTICAL BENCH</b> FILTER'S TEST		LIGO-D051177-00-D	
data <sup>1</sup> from		176	A 2