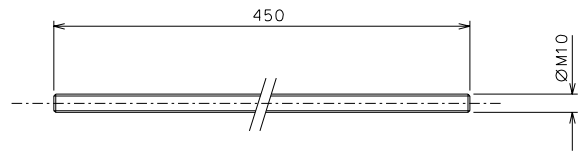
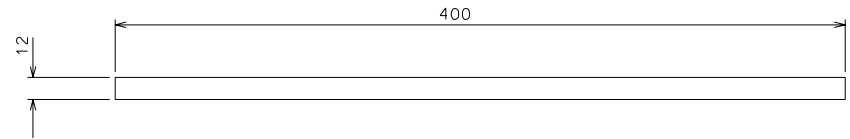
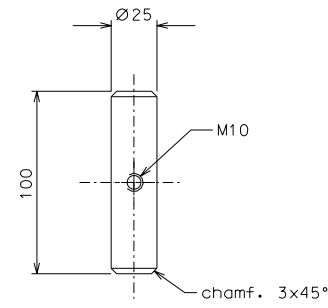


177

175



179



178

ref.	note	date	signature				
modifications							
179	2 inox	1/2					
178	2 inox	1/2					
177	2 Fe 340	1/2					
175	2 Fe 340	1/2					
ref.	pieces	mat. and treatments	scale	ref.	pieces	mat. and treatments	scale

General machining tolerances UNI 5307-63								
Dimensions	< 6	> 6-30	> 30-120	> 120-315	> 315-1000	> 1000-2000	> 2000-4000	> 4000
linear Toli.	± 0,1	± 0,2	± 0,3	± 0,5	± 0,8	± 1,2	± 2	± 3
angular Toli.	± 1'	± 30'	± 20'	± 10' referred to the shortest side				

		LIGO PROJECT		designed for R.De Salvo	
draw. by G. Gennaro-PROMEC		date 28-10-05		scale 1/2	
title HAM-OPTICAL BENCH LARGE BLADE TOOL				LIGO-D051181-00-D	
date ¹ from 180				A 2	