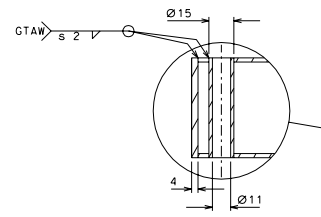
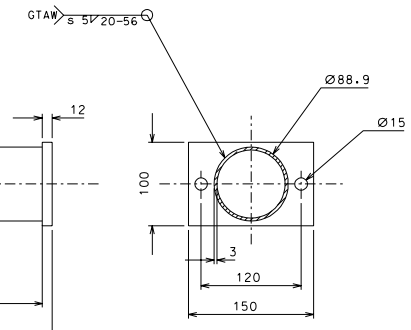
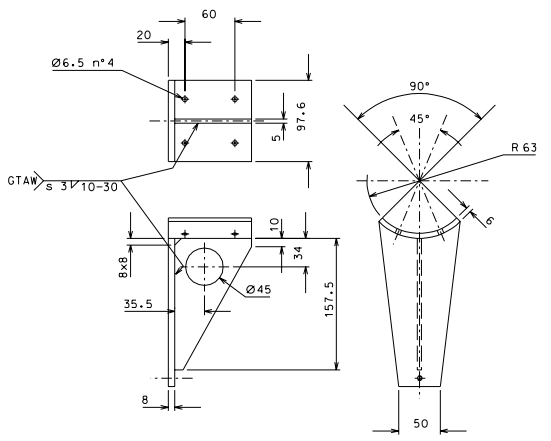
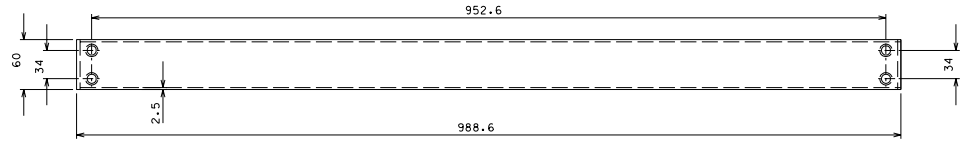


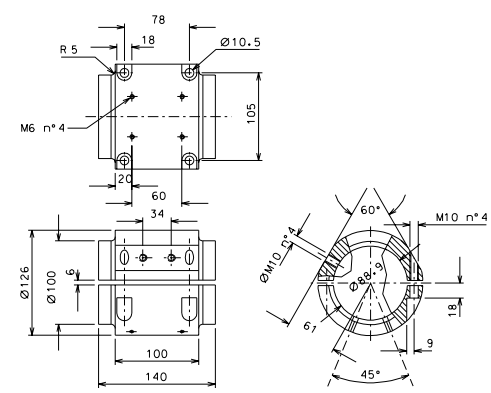
170.1



170.2



170.3



170.4

ref.	desc.	mat. and treatments	serie	ref.	desc.	mat. and treatments	serie
	none				none		
modifications							
170.4	3	AISI 304 L	1/3				
170.3	3	AISI 304 L	1/3				
170.2	3	AISI 304 L	1/3				
170.1	3	AISI 304 L	1/3				
ref.	desc.	mat. and treatments	serie	ref.	desc.	mat. and treatments	serie

General machining tolerances UNI 5117-85							
dimension	< 4	4-50	50-100	100-250	250-500	500-1000	> 1000
linear dim.	± 0.1	± 0.2	± 0.3	± 0.5	± 0.7	± 1.0	± 1.5
angular dim.	± 1'	± 30'	± 20'	± 10'	related to the start of the		

designed by		R. De Salvo	
drawn by		G. Gemmaro-PROMECA	
date		2-11-05	1/3
title		HAM-OPTICAL BENCH STRUCTURE	
sheet		178	A 1