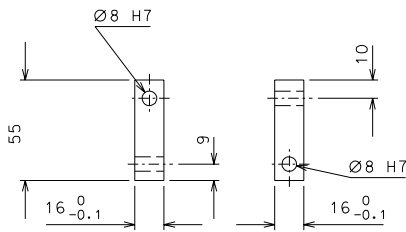
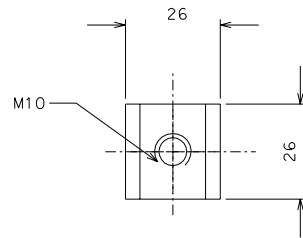


176



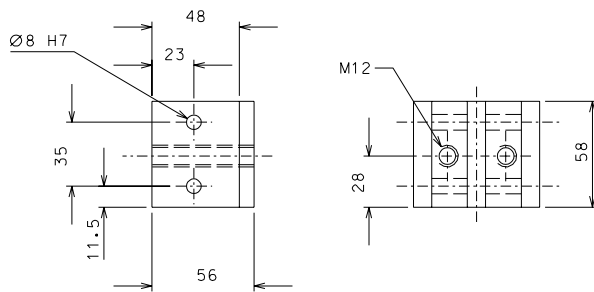
182

nickel flashing



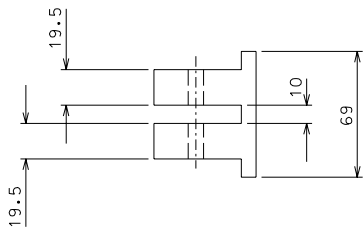
180

nickel flashing

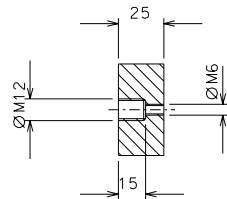


189

nickel flashing



191



modified number pieces				26-02-06			
ref.	note	date	signature	modifications			
191	1	Fe 360	1/1				
189	1	Fe 360	1/1				
182	1	Fe 360	1/2				
180	1	Fe 360	1/1				
176	2	EN 6082	1/1				
ref.	pieces	mat. and treatments	scale	ref.	pieces	mat. and treatments	scale

General machining tolerances UNI 5307-63								
Dimensions	< 6	6-30	30-120	120-315	315-1000	>1000-2000	>2000-4000	>4000
Linear Toli.	± 0.1	± 0.2	± 0.3	± 0.5	± 0.8	± 1.2	± 2	± 3
angular Toli.	± 1'	± 30'	± 20'	± 10' referred to the shortest side				
designed for				R.De Salvo				
LIGO PROJECT				draw. by G. Gennaro-PROMEC				
date				3-11-05		scale		1/2
title				HAM-OPTICAL BENCH				
LARGE BLADE TOOL				LIGO-D051185-01-D				
ref. from				176-180		A		2