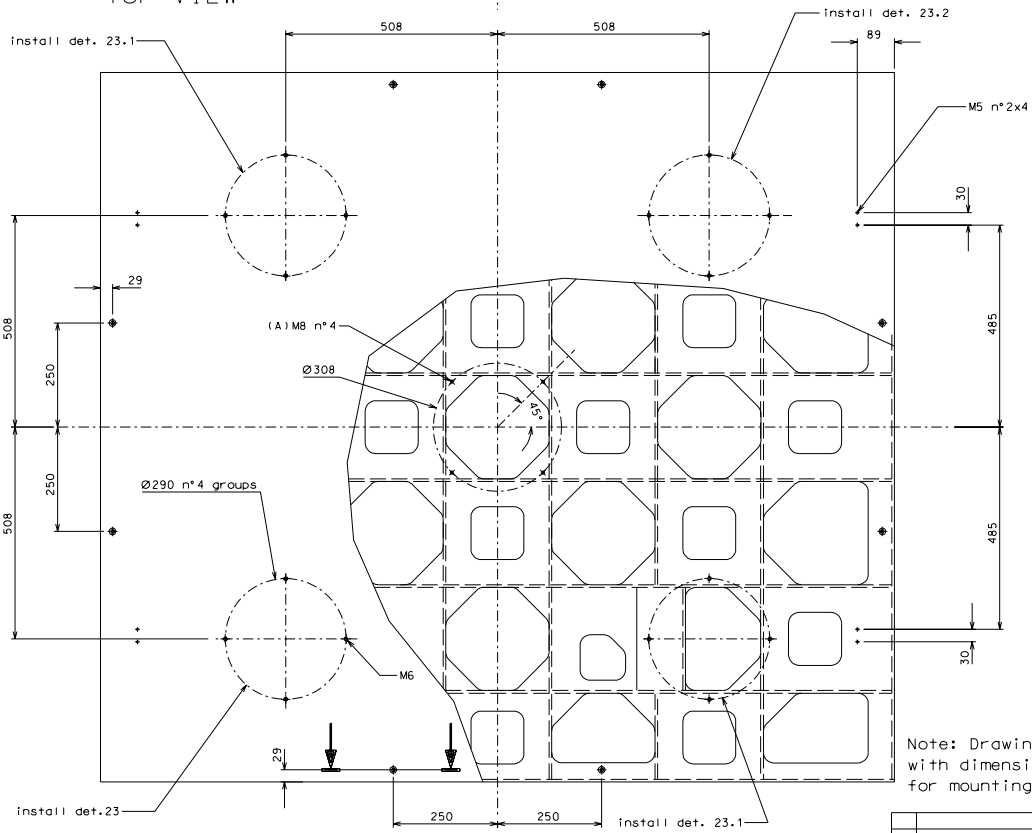
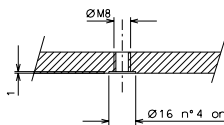


TOP VIEW



BOTTOM VIEW



Ø16 n°4 on 4 sides
If it is necessary to fix up perpendicular rod

A		added holes for LVDT		01-09-06				
ref.	date	signature						
modifications								
240 X	EN 5083	1/6						
ref.	date	signature	ref.	date	signature			
General machining tolerances UNI 5301-83								
Dimension	< 6	6-30	30-120	120-315	315-1000	1000-2000	2000-4000	> 4000
Linear Tol.	±0.1	±0.2	±0.3	±0.5	±1.0	±1.5	±2	±3
Angular Tol.	±1'	±30'	±20'	±10'	refered to the shortest side			
designed for						R.De Salvo		
by						G. Gennaro-PROMEC		
date						4-02-06		
scale						1/6		
Title						HAM-OPTICAL BENCH		
Project						LIGO-D051206-01-D		
Sheet						224		
A						1		