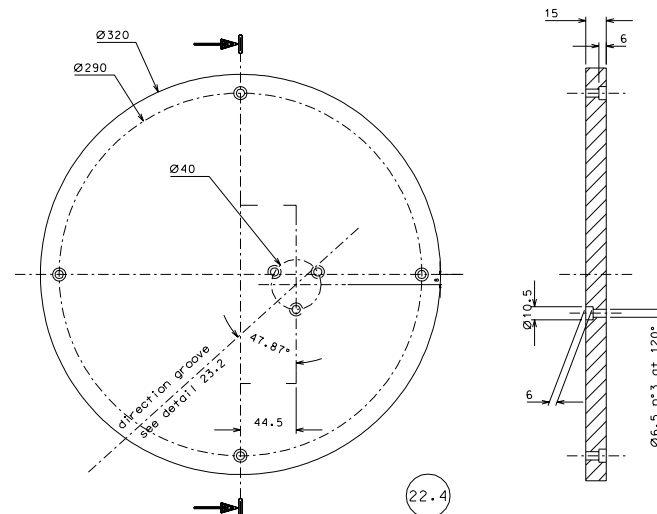
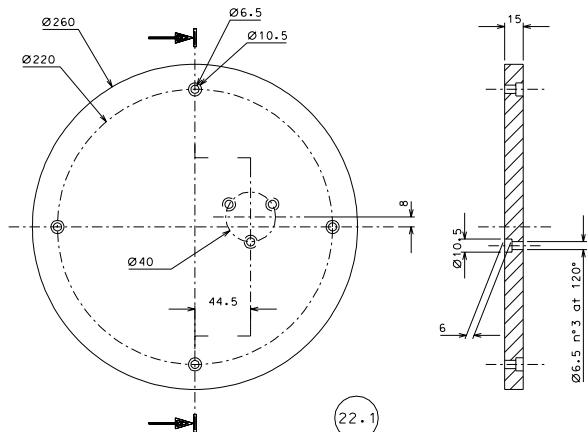


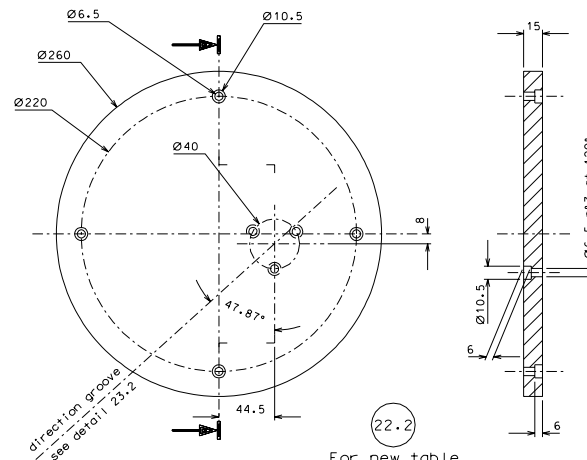
22.3  
For old table  
Install with detail 23.1  
see drawing 51117



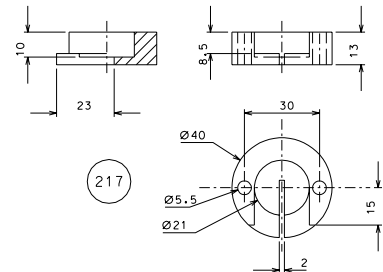
22.4  
For old table  
Install with detail 23.2  
see drawing 51117



22.1  
For new table  
Install with detail 23.1  
see drawing 51117



22.2  
For new table  
Install with detail 23.2  
see drawing 51117



Note: The parts 22.3-22.4 for LASTI prototype only

ref.	name	date	signature
modified dimension detail 22.3-22.4 09-04-06			
modifications			
217	4	EN 6082	1/1
22.4	2	EN 6082	1/2
22.3	2	EN 6082	1/2
22.2	2	EN 6082	1/2
22.1	2	EN 6082	1/2
ref.	plate	ref. and treatments	scale

General machining tolerances UNI 5107-85			
dimensions	< 4	4-30	> 30-100
linear tol.	± 0.1	± 0.2	± 0.3
angular tol.	± 1'	± 30'	± 20'
tolerances are referred to the start of the dimension			

designed by	R. De Salvo
drawn by	G. Germano-PROMECH
date	6-02-06
scale	1/2
title	LIGO PROJECT
HAM-OPTICAL BENCH	
CONNECTION TO TABLE	
ref.	106-208
scale	A 1