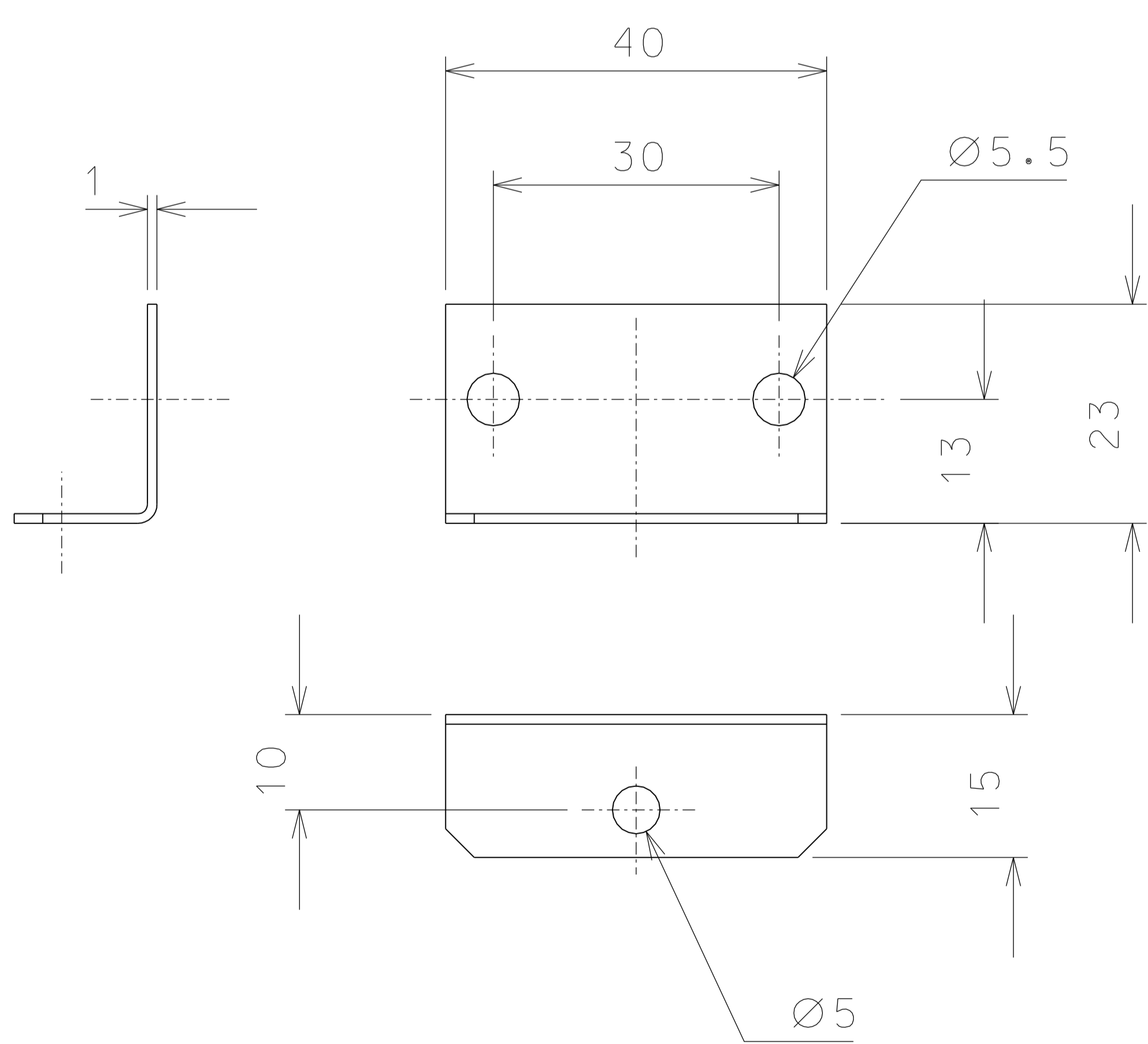


Use these set of holes for the parts 23.1

Use these set of holes for the parts 23 and 23.2

22

See drawing 51117



217

NOTE: Use set of holes diameter 290 for old table and holes on diameter 220 for new table.

ref.	note	date	signature
	changed part 217	14-11-06	
	changed list details	11-10-06	
	jointed one type only	09-10-06	
	modified dimension detail 22.3-22.4	09-04-06	
modifications			
217	4	AISI 304	1/1
22	4	EN 6082	1/2
ref.	pieces	mat. and treatments	scale

General machining tolerances UNI 5307-63								
Dimensions	< 6	>6-30	> 30-120	> 120-315	> 315-1000	>1000-2000	>2000-4000	> 4000
linear Toll.	± 0.1	± 0.2	± 0.3	± 0.5	± 0.8	± 1.2	± 2	± 3
angular Toll.	± 1	± 30'	± 20'	± 10' referred to the shortest side				
				LIGO PROJECT		designed for R.De Salvo		
title HAM-OPTICAL BENCH CONNECTION TO TABLE				draw. by G.Gennaro-PROMECC		date 6-02-06		scale 1/2
				detail from 106-208		LIGO-D051207-04-D		A 1