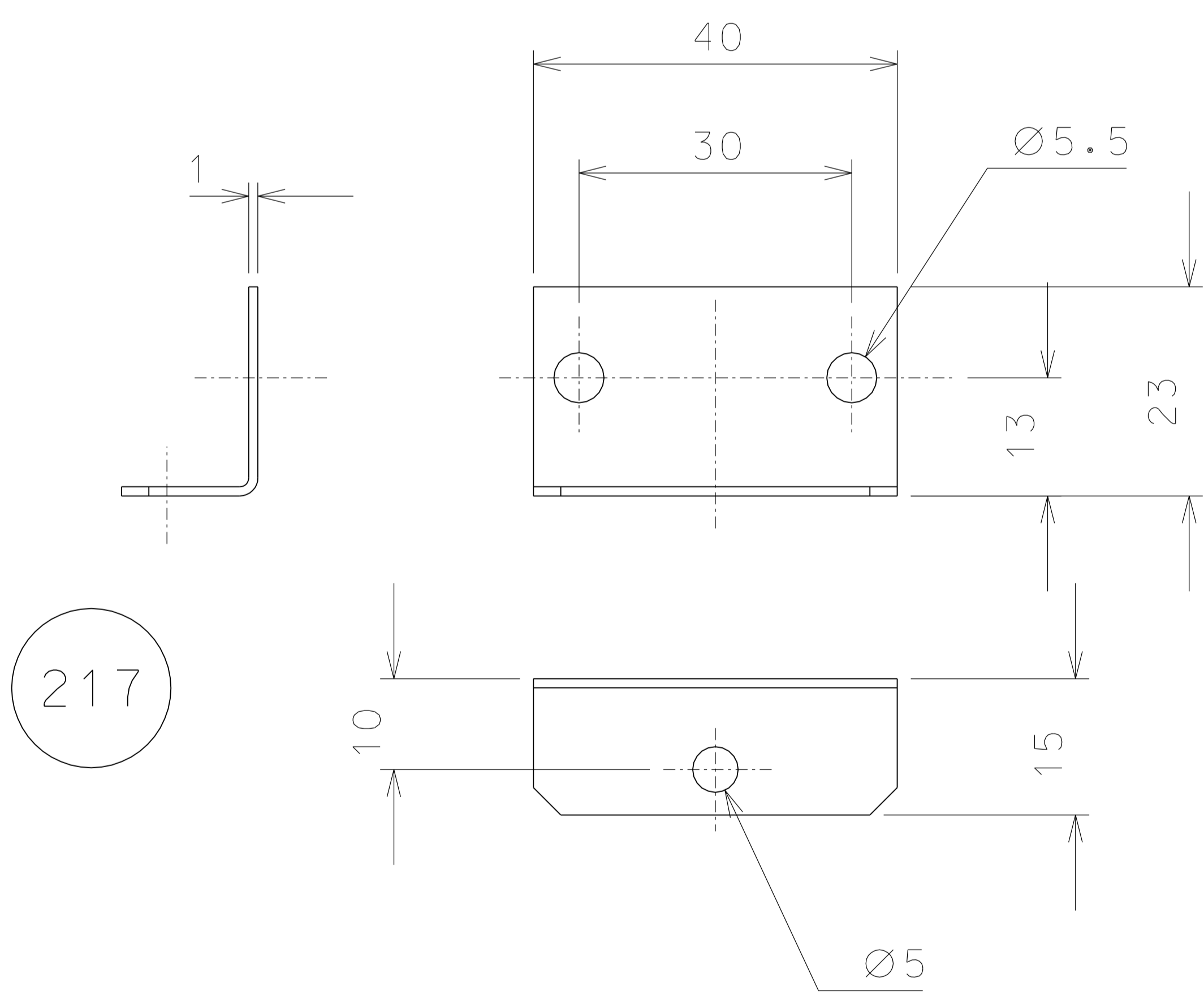
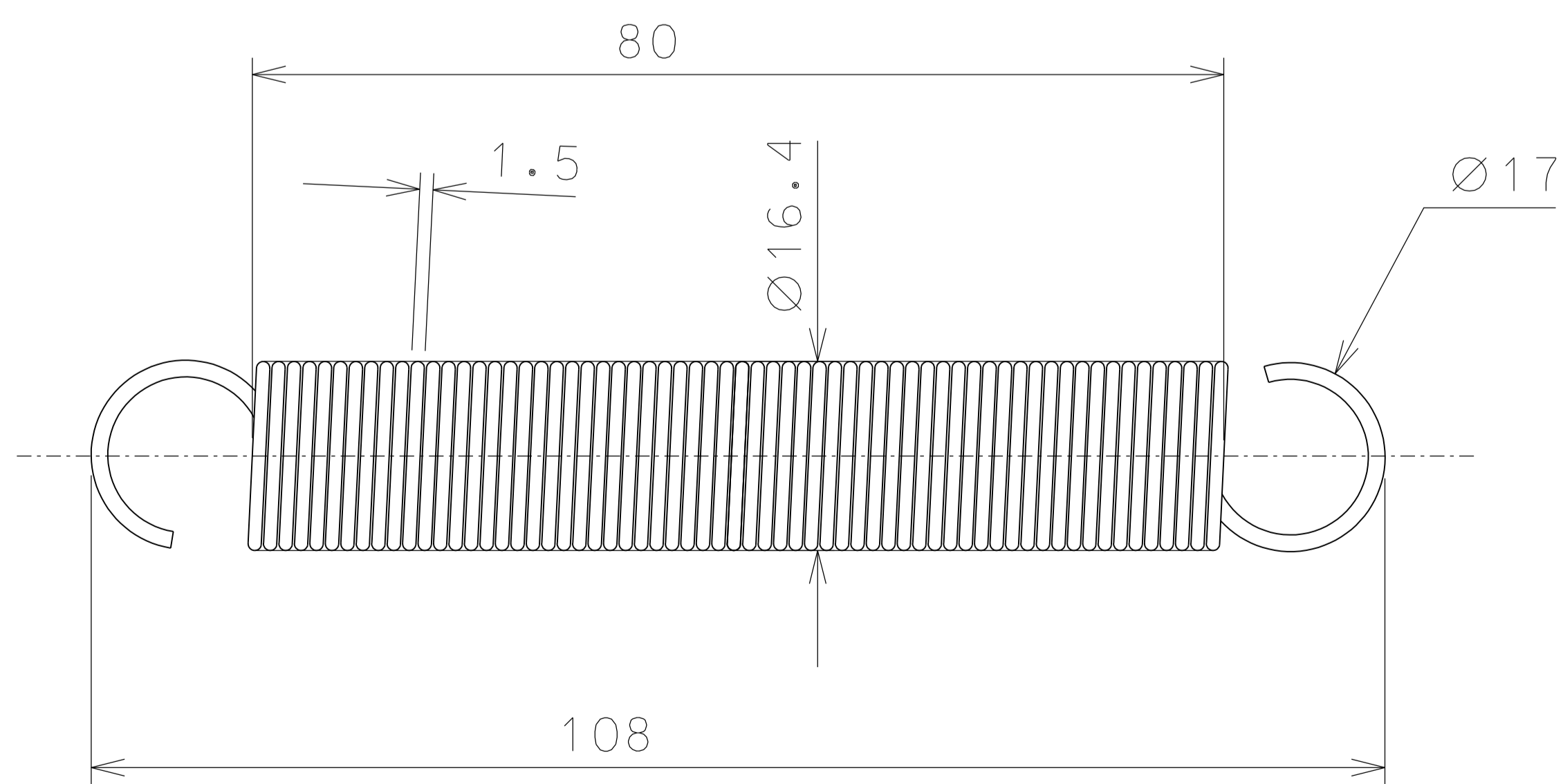


See drawing 51117



NOTE: Use set of holes diameter 290 for old table and holes on diameter 220 for new table.



Data:
 K=300 N/m
 turns=52
 working extension= from 0 to 62.5 mm
 tension range= from 0 to 18.9 N

	added part 76	22-11-06	
	changed part 217	14-11-06	
	changed list details	11-10-06	
	jointed one type only	09-10-06	
ref.	note	date	signature
modifications			
217	4	AISI 304	1/1
76	X	C72 hardened	1/1
22	4	EN 6082	1/2
ref.	pieces	mat. and treatments	scale

General machining tolerances UNI 5307-63							
Dimensions	< 6	> 6-30	> 30-120	> 120-315	> 315-1000	> 1000-2000	> 2000-4000
linear Toll.	± 0.1	± 0.2	± 0.3	± 0.5	± 0.8	± 1.2	± 2
angular Toll.	± 1	± 30'	± 20'	± 10' referred to the shortest side			

designed for		R.De Salvo	
draw. by		G.Gennaro-PRIMEC	
date		6-02-06	
title		LIGO PROJECT	
scale		1/2	
title		HAM-OPTICAL BENCH	
detail from		LIGO-D051207-05-D	
ref.		106-208	
signature		A 1	