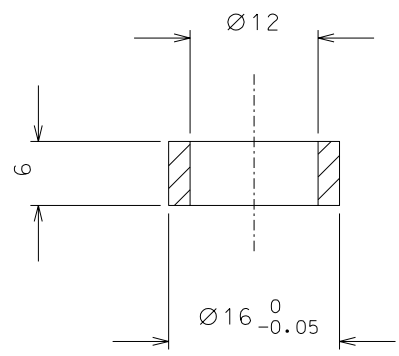
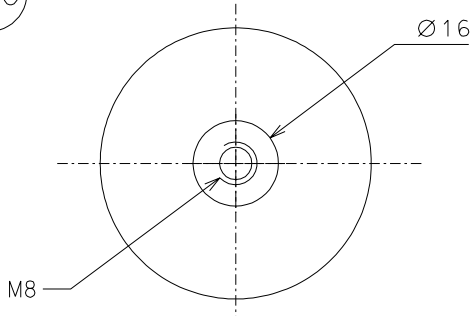
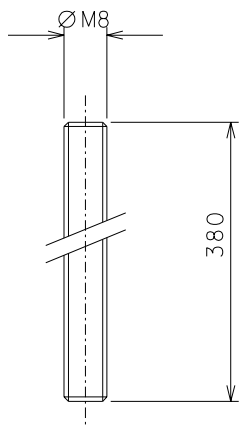


220



221



222

ref.	note			date	signature
modifications					
221	4	AISI 304	2/1		
220	4	AISI 304	1/1	222	4
ref.	pieces	mat. and treatments	scale	ref.	pieces

General machining tolerances UNI 5307-63								
Dimensions	< 6	> 6-30	> 30-120	> 120-315	> 315-1000	> 1000-2000	> 2000-4000	> 4000
linear Toll.	± 0.1	± 0.2	± 0.3	± 0.5	± 0.8	± 1.2	± 2	± 3
angular Toll.	± 1	± 30'	± 20'	± 10' referred to the shortest side				
	<b>LIGO PROJECT</b>				designed for <b>R.De Salvo</b>			
	title <b>HAM-OPTICAL BENCH</b> JIG TO FIX DETAIL 218				draw. by <b>G. Gennaro-PROMEC</b>			
					date 14-02-06		scale 1/1	
					LIGO-D051210-00-D			
				detail from		A		3