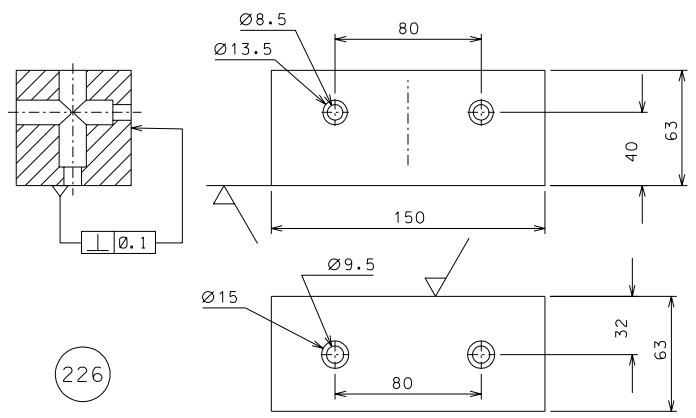
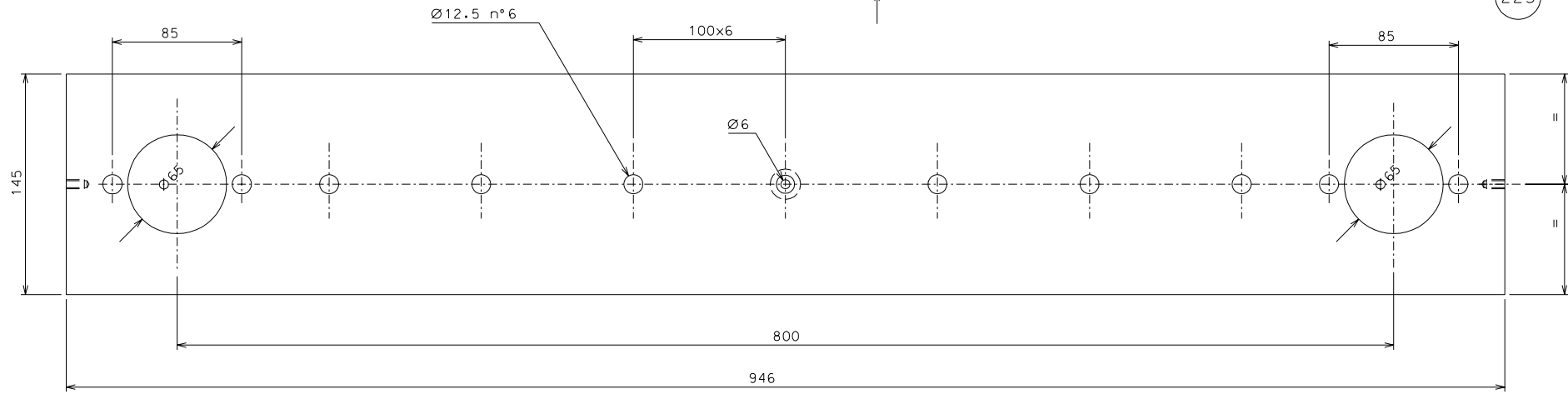
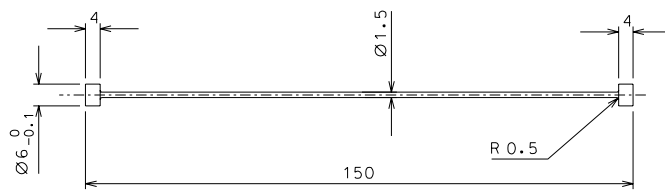


225



226



229

ref.	pieces	mat. and treatments	scale	note	date	signature
226	4	EN 6082	1/2			
225	1	EN 6082	1/2			
229	2	maraging	1/1			

General machining tolerances UNI 5307-63						
Dimensions	< 6	> 6-30	> 30-120	> 120-315	> 315-1000	> 1000-4000
Linear Toli.	± 0.1	± 0.2	± 0.3	± 0.5	± 0.8	± 1.2
angular Toli.	± 1'	± 30'	± 20'	± 10' referred to the shortest side		

designed for	R.De Salvo	
draw. by	G. Gennaro-PROMEC	
date	28-04-06	scale 1/2
title	HAM-OPTICAL BENCH	
	IP TEST	
date <sup>1</sup> from	212	A 2