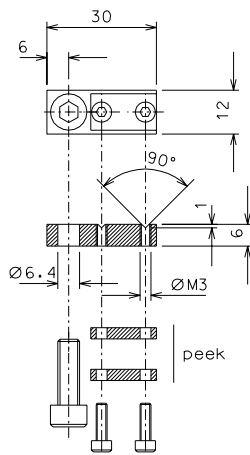
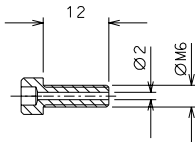


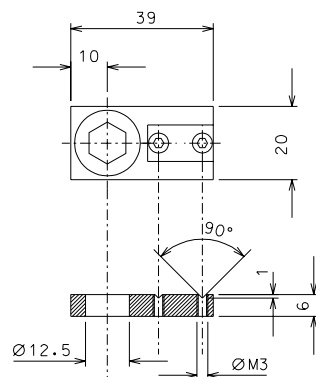
234



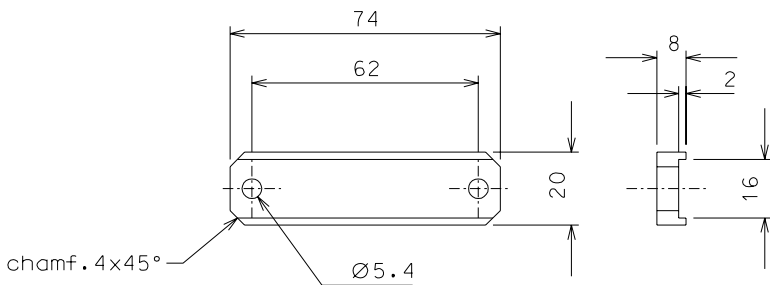
236



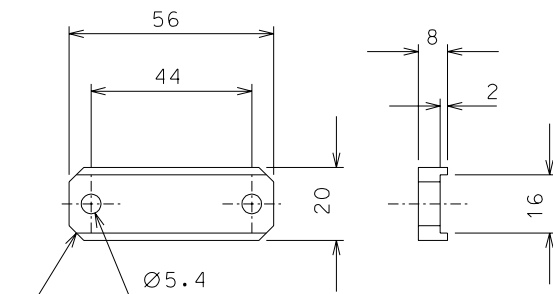
235



238



242



241

ref.	note	date	signature
modifications			
241	8 EN 6082	1/1	
238	X EN 6082	1/1	
236	X EN 6082	1/1	
235	4 AISI 316	1/1	
234	X peek 1000	1/1	
ref.	pieces	mat. and treatments	scale
242	4	EN 6082	1/1

General machining tolerances UNI 5307-63						
Dimensions	< 6	6-30	30-120	120-315	315-1000	>1000-2000
Linear Toli.	± 0.1	± 0.2	± 0.3	± 0.5	± 0.8	± 1.2
angular Toli.	± 1'	± 30'	± 20'	± 10'		
referred to the shortest side						
designed for				R.De Salvo		
draw. by				G. Gennaro-PROME		
date				18-07-06		
title				scale		
HAM-OPTICAL BENCH				1/1		
DETAILS WIRING				LIGO-D051224-00-D		
ref. from				221-222-223 A 2		