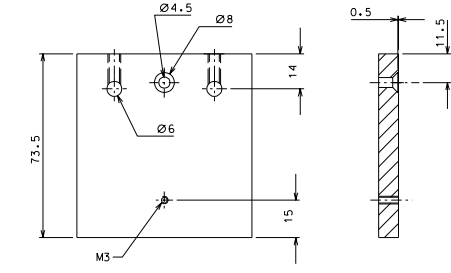
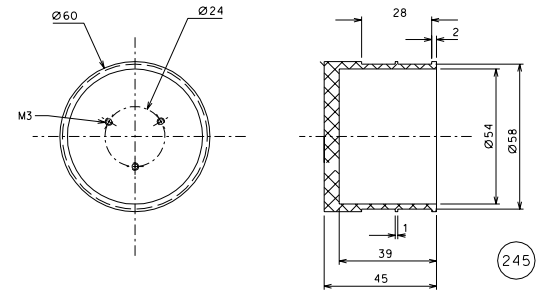


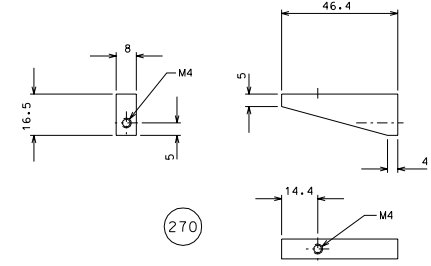
269



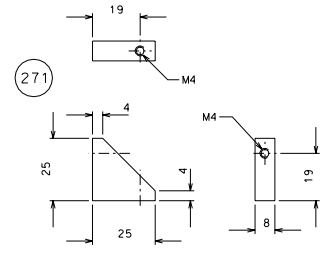
243



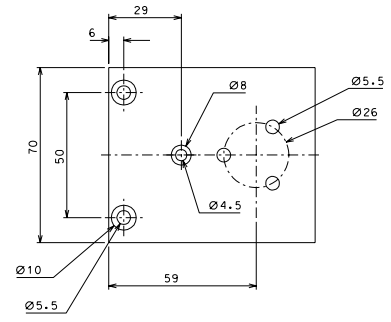
245



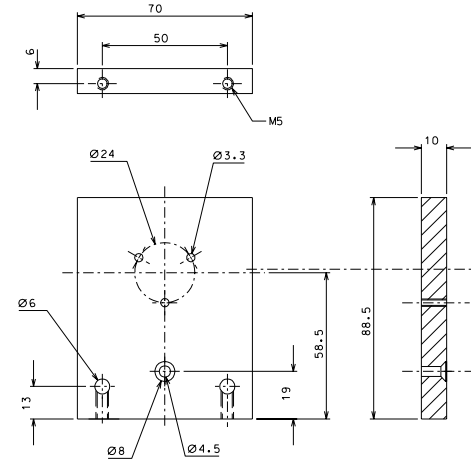
270



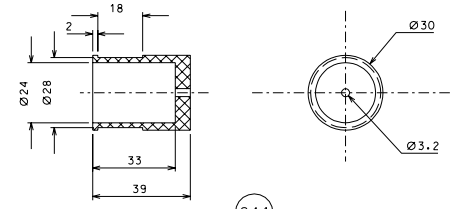
271



268



246



244

ref.	none	one	signature
modifications			
268	4	EN 6082	1/1
246	4	EN 6082	1/1
245	4	peek 1000	1/1
244	4	peek 1000	1/1
243	4	EN 6082	1/1
244	4	EN 6082	1/1
243	4	EN 6082	1/1
ref.	blank	ref. and treatments	scale

General machining tolerances UNI 5117-85

dimensions	< 4	4-30	30-100	100-315	315-1000	1000-4000	> 4000
linear tol.	± 0.1	± 0.2	± 0.3	± 0.4	± 0.5	± 0.7	± 1
angular tol.	± 1'	± 30'	± 20'	± 10' related to the shortest side			

designed by: **R. De Salvo**  
 drawn by: **G. Germano-PROMECA**  
 date: **06-09-06** scale: **1/1**

11114 **HAM-OPTICAL BENCH** LIGO-D051242-00-D  
 CILINDRICAL LVDT  
 sheet: **230** of **A 1**