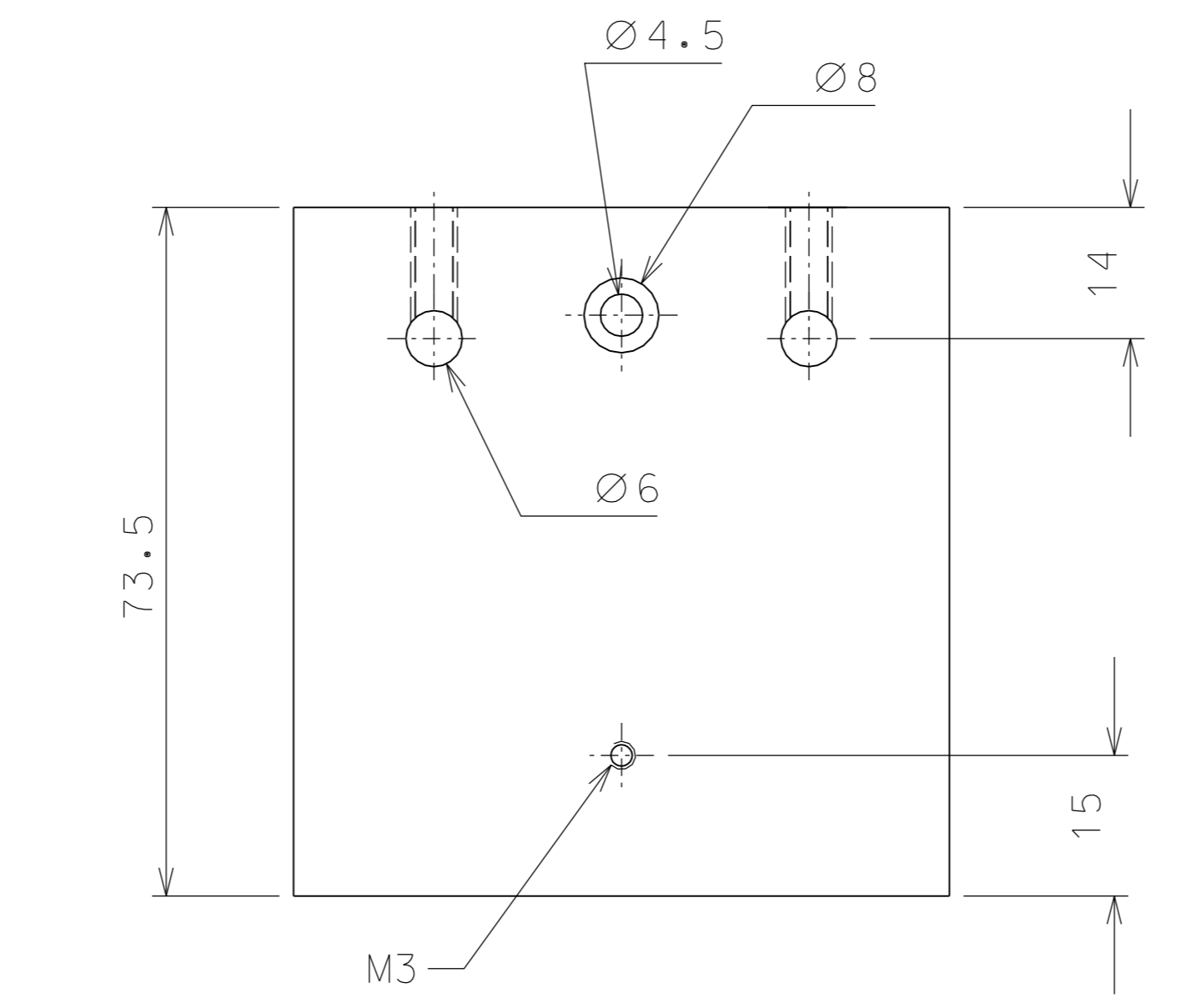
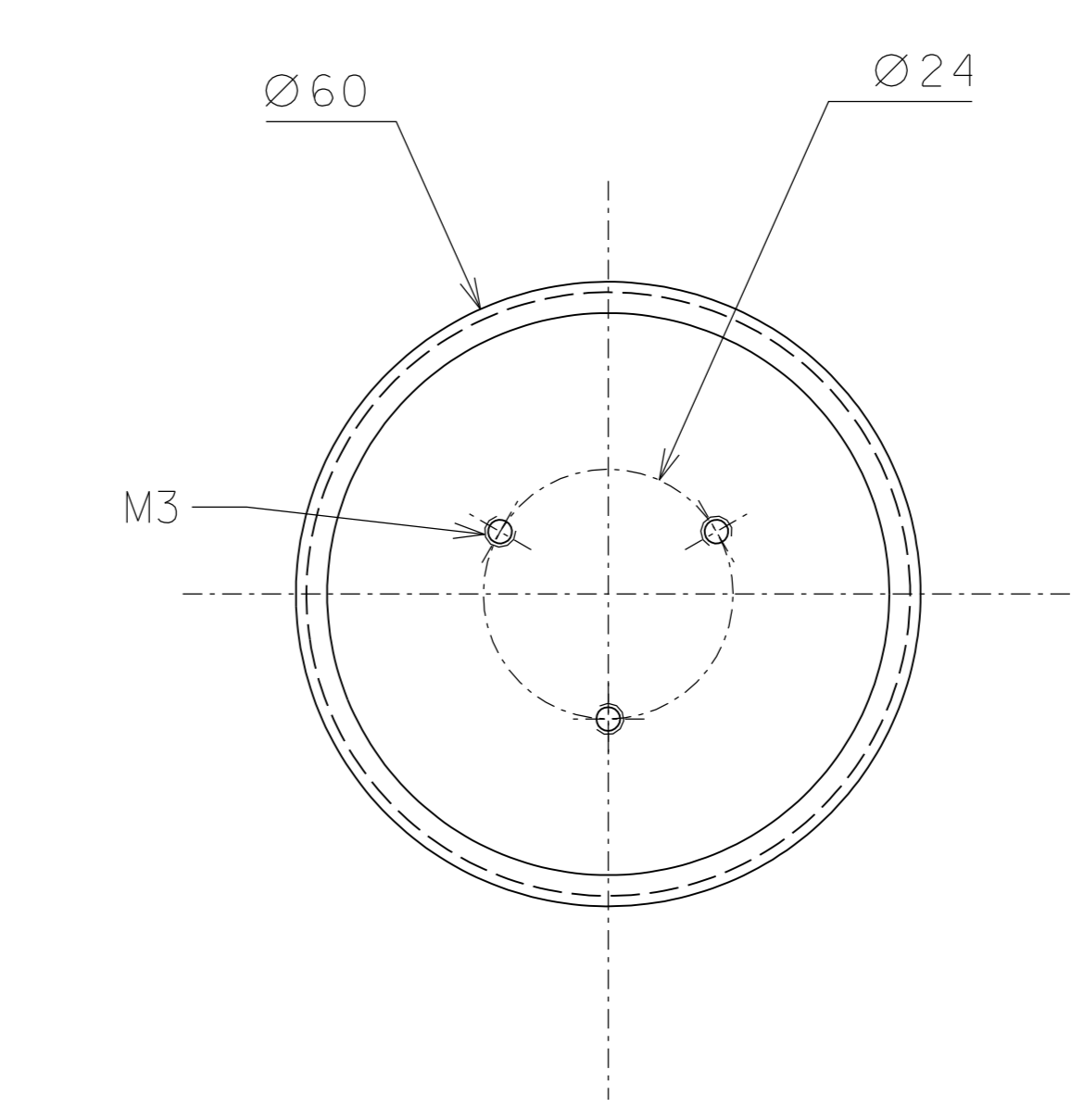


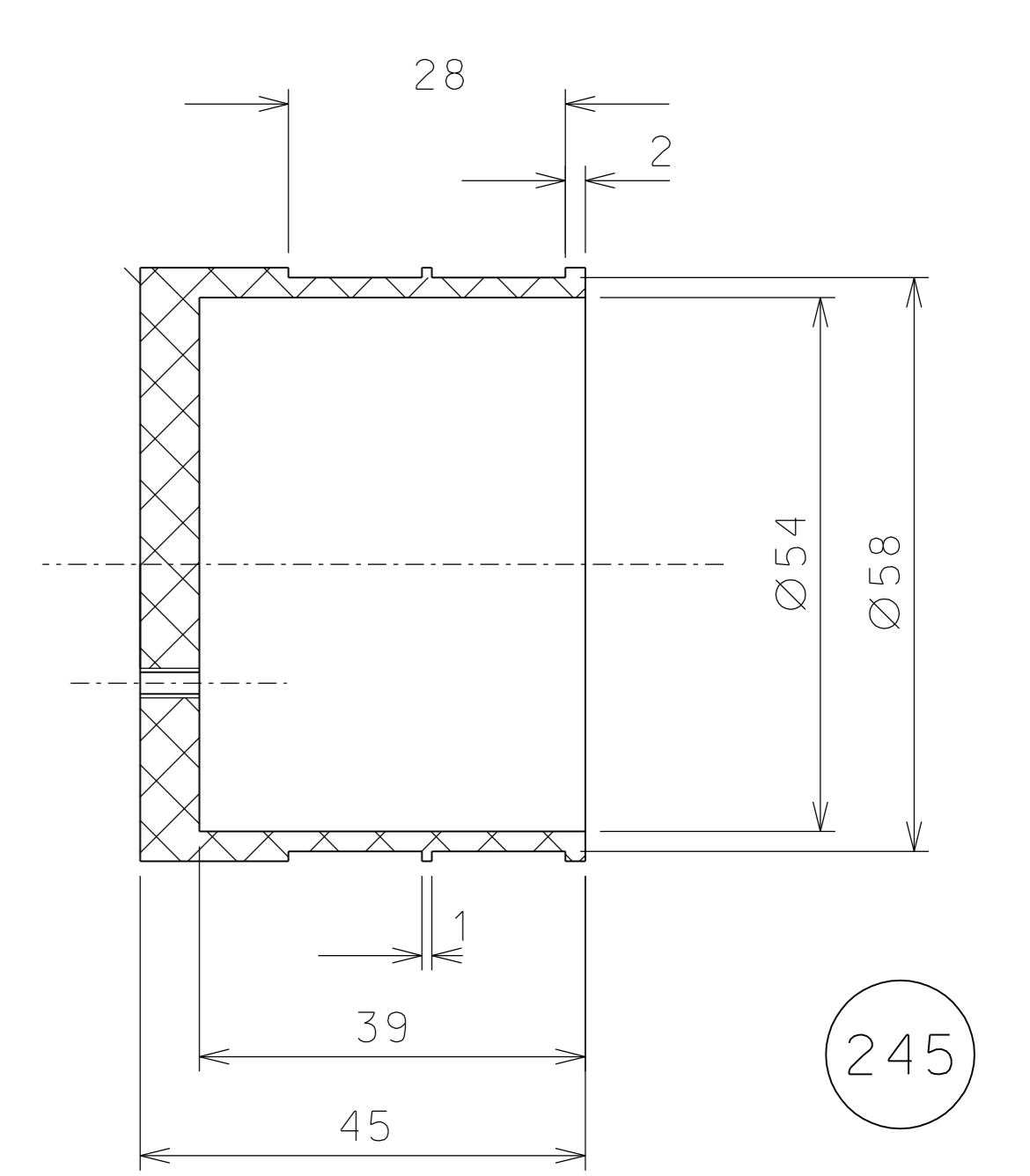
269



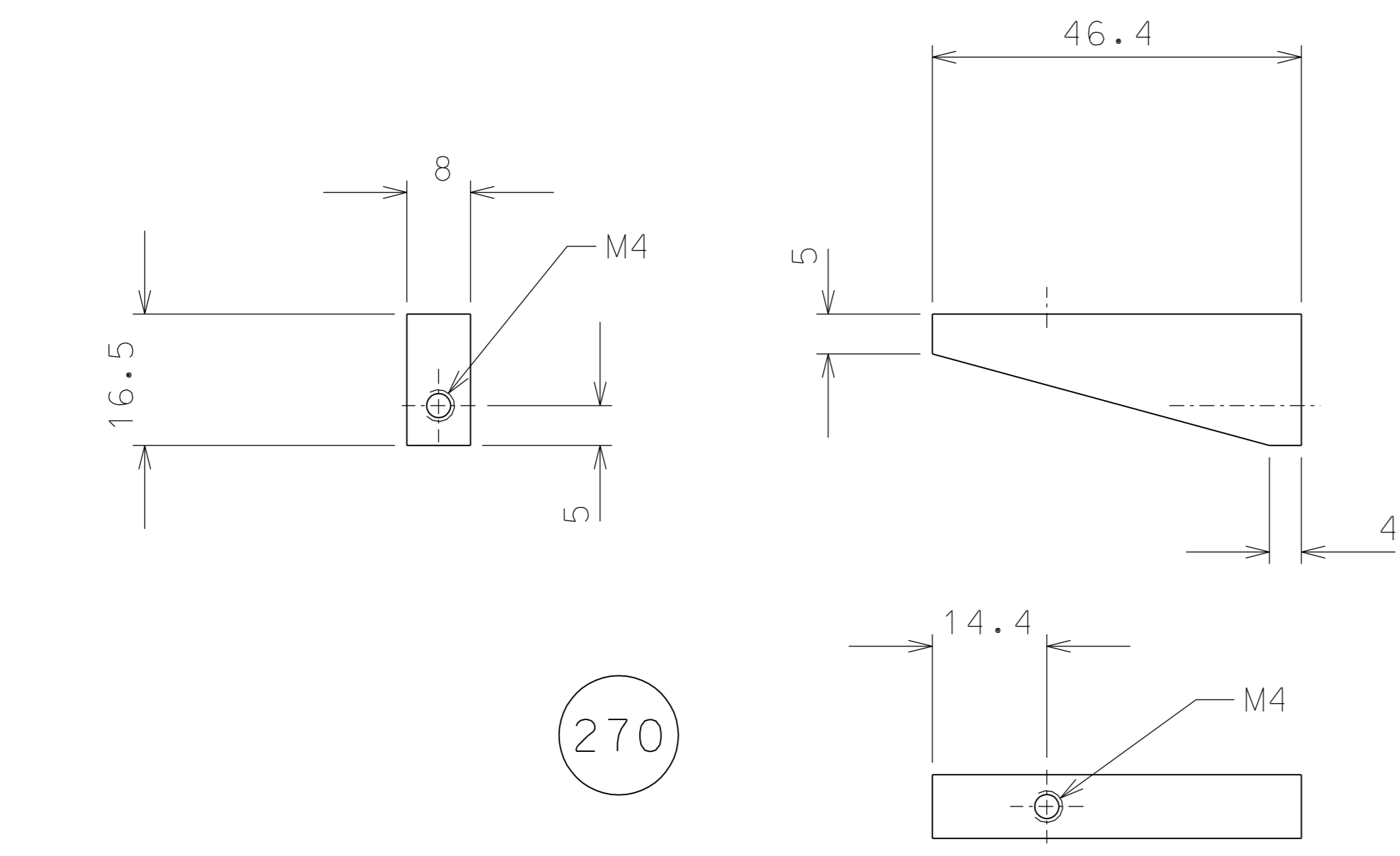
243



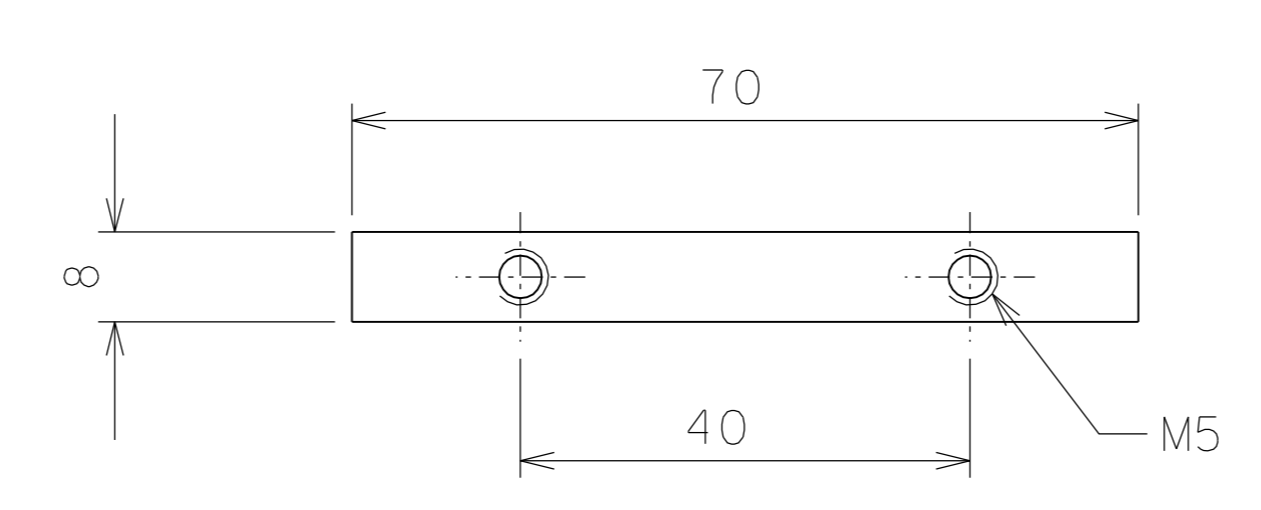
245



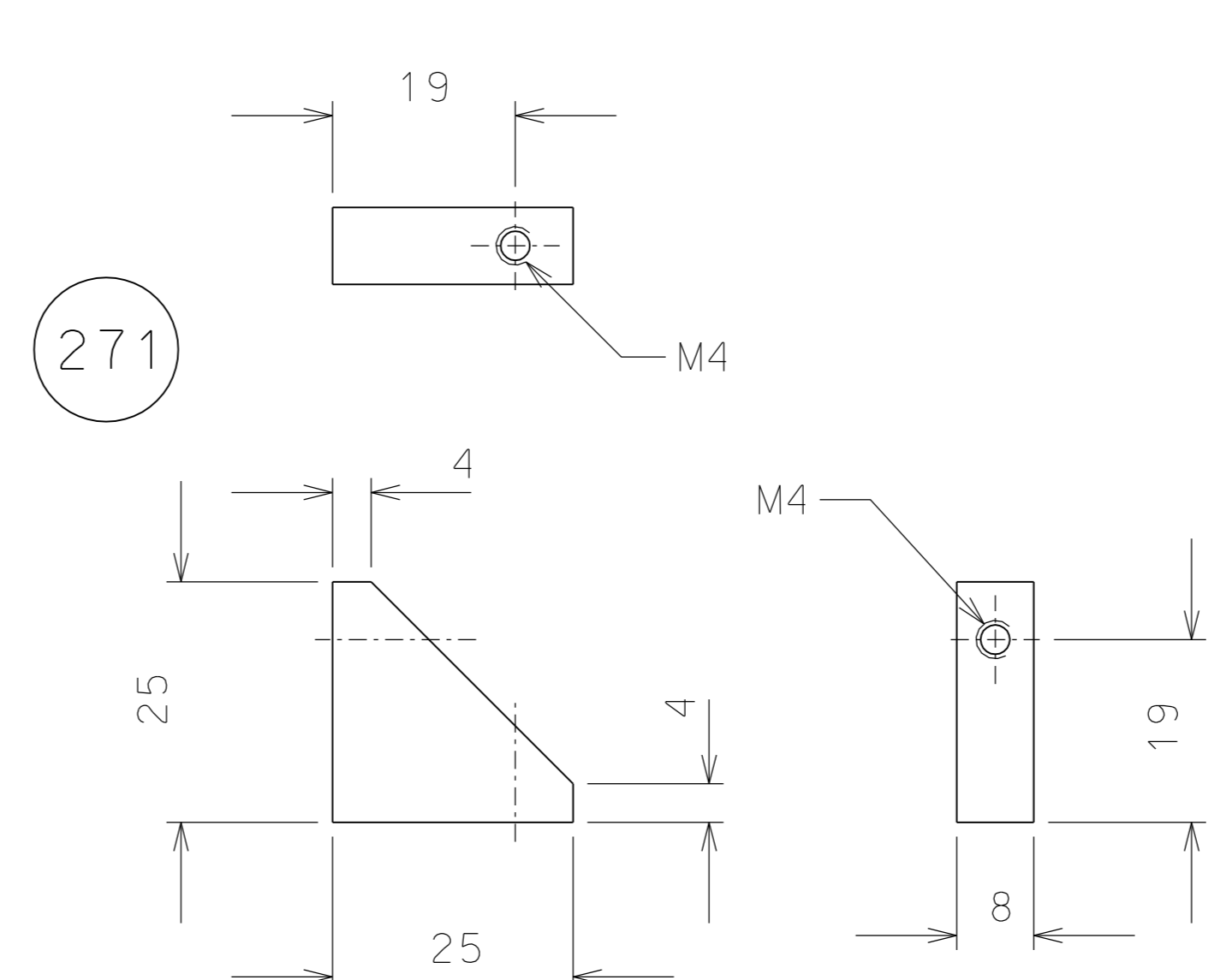
245.1



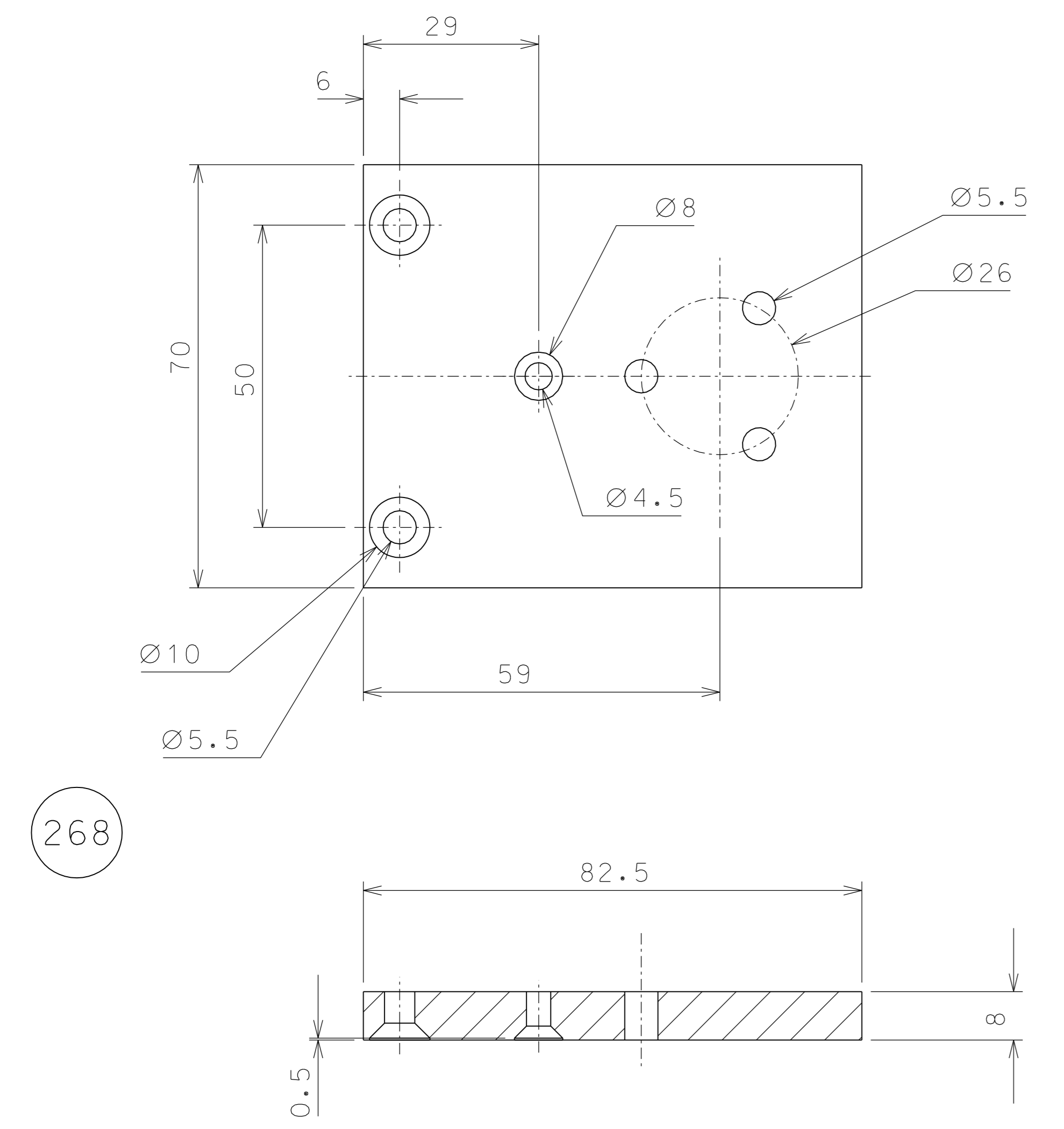
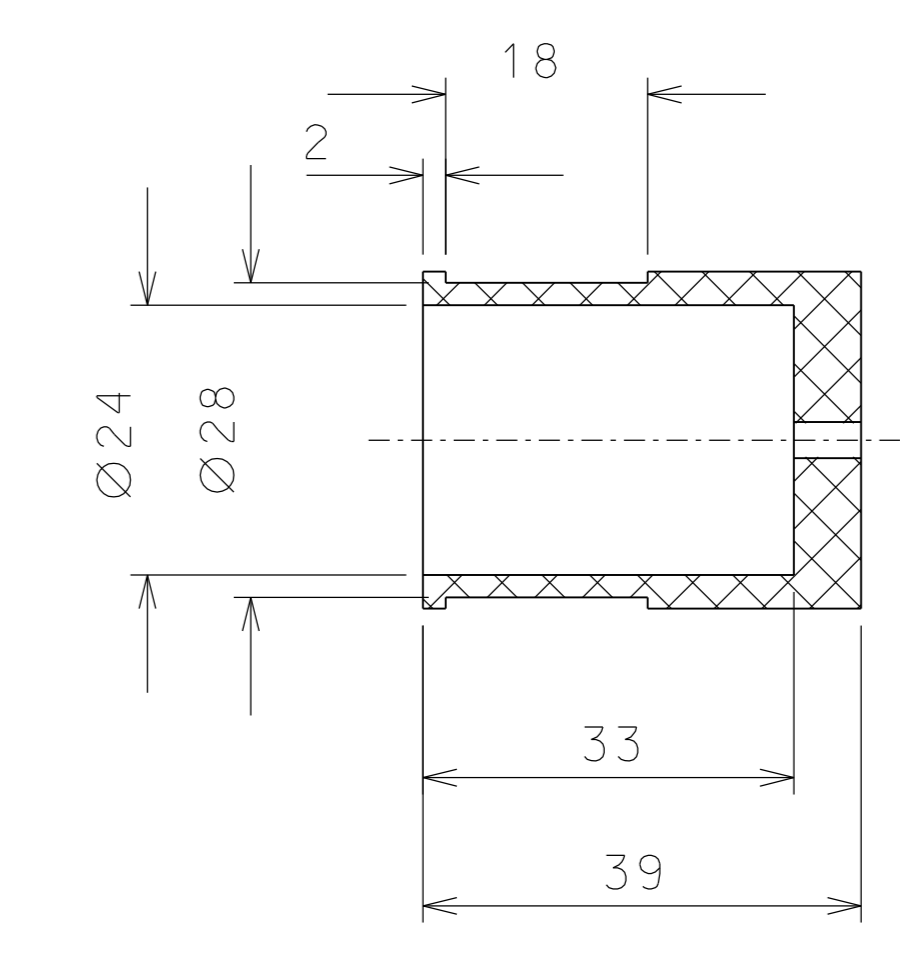
270



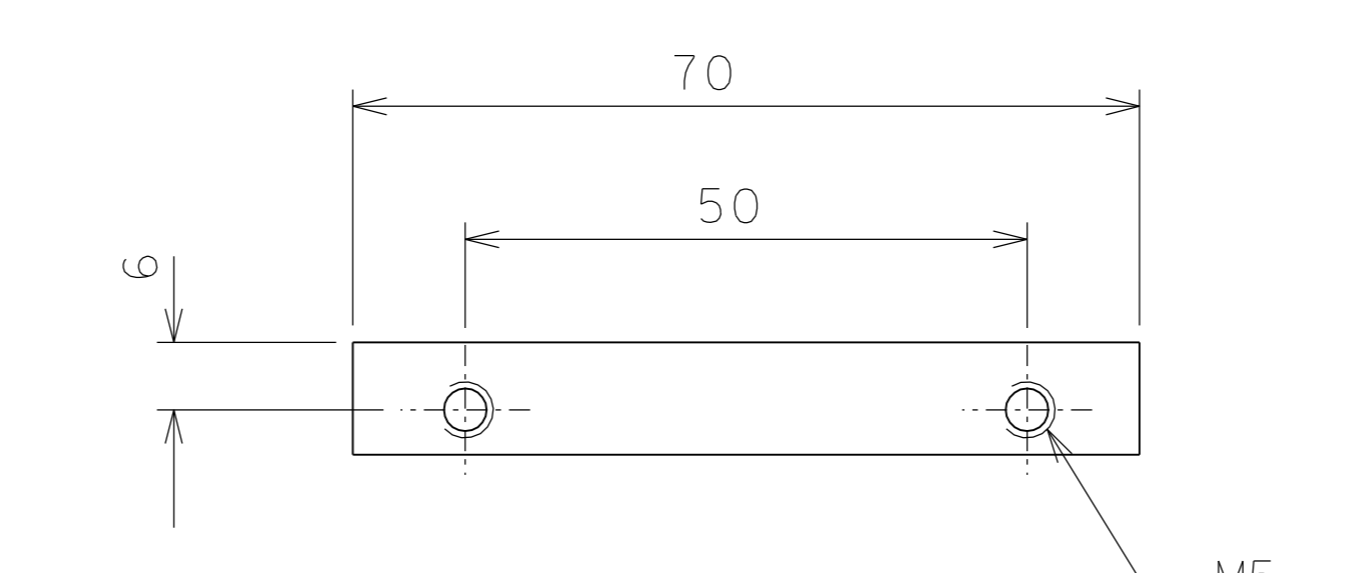
271



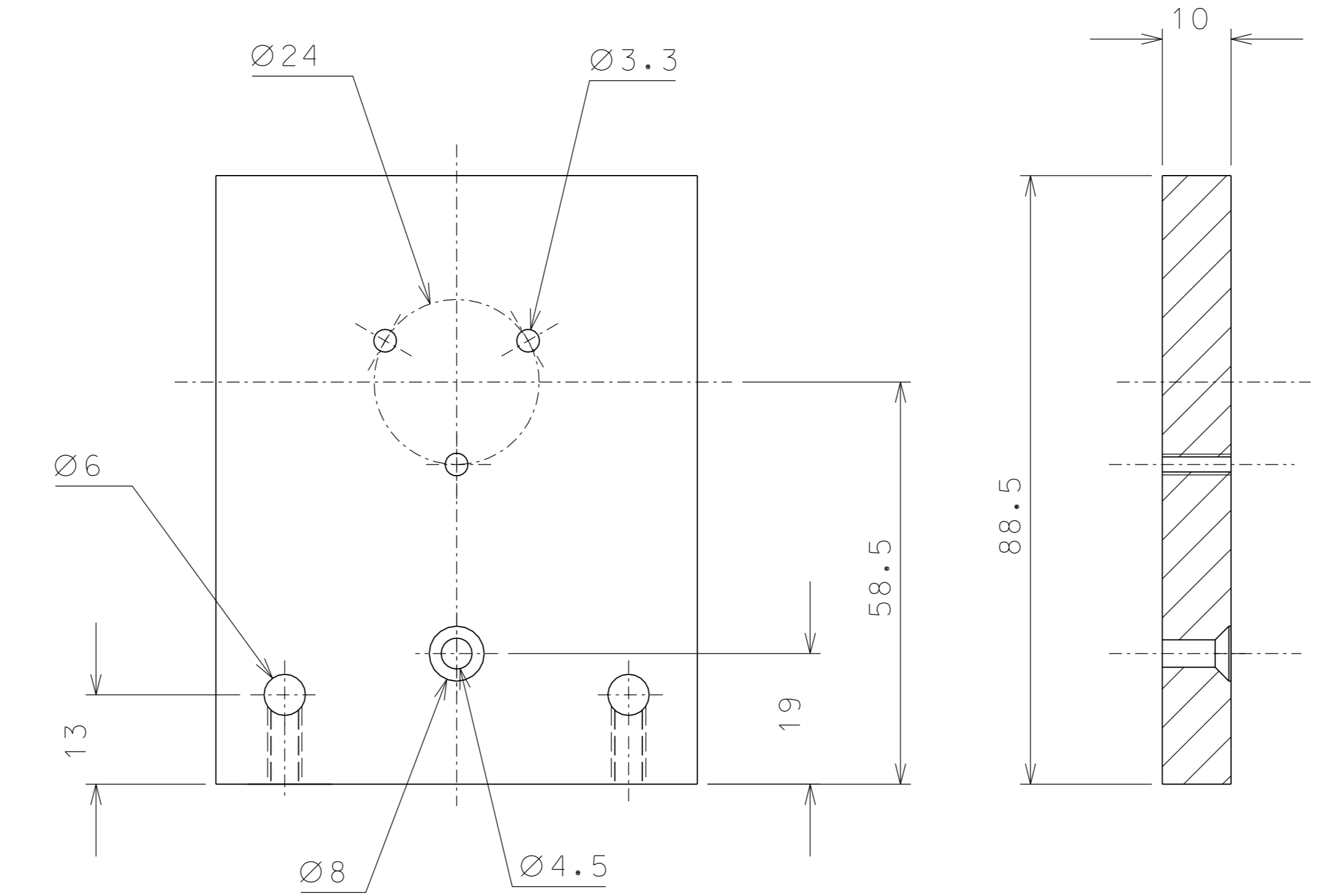
244



268



246



		added part 245.1		06-11-06			
		added missing dimension		03-10-06			
ref.	note		date	signature			
modifications							
246	4	EN 6082	1/1				
245.1	4	EN 6082	1/1	271 4 EN 6082 1/1			
245	4	peek 1000	1/1	270 4 EN 6082 1/1			
244	4	peek 1000	1/1	269 4 EN 6082 1/1			
243	4	EN 6082	1/1	268 4 EN 6082 1/1			
ref.	pieces	mat. and treatments	scale	ref.	pieces	mat. and treatments	scale

General machining tolerances UNI 5307-63							
Dimensions	< 6	> 6-30	> 30-120	> 120-315	> 315-1000	> 1000-2000	> 2000-4000
linear Toli.	± 0.1	± 0.2	± 0.3	± 0.5	± 0.8	± 1.2	± 2
angular Toli.	± 1	± 30'	± 20'	± 10' referred to the shortest side			
designed for							
LIGO PROJECT				draw. by R.De Salvo			
				G. Gennaro-PROMECC			
				date 06-09-06			
				scale 1/1			
title HAM-OPTICAL BENCH				LIGO-D051242-02-D			
CILINDRICAL LVDT				detail from 230 A 1			