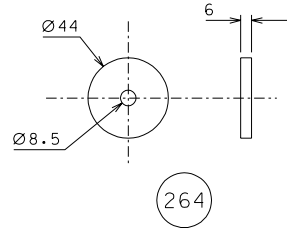
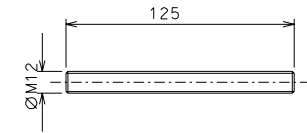


262

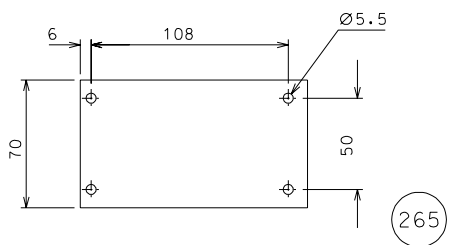
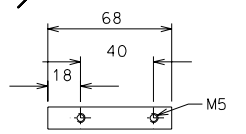


264

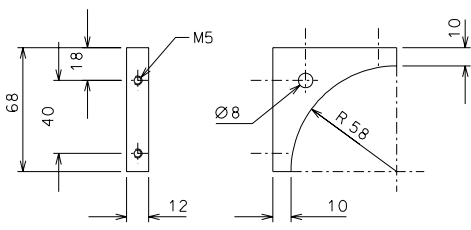


267

262.1 with the same dimension but different orientation of holes



265



263

added part 262.1		29-09-06	
modified parts 266-267-276		27-09-06	
ref.	note	date	signature
modifications			
265	4 EN 6082	1/2	
264	4 EN 6082	1/2	
263	8 EN 6082	1/2	
262.1	1 EN 6082	1/2	
262	3 EN 6082	1/2	
276	1 EN 6082	1/2	
267	3 AISI 316	1/2	
266	1 AISI 304 L	1/2	
ref.	pieces	mat. and treatments	scale

General machining tolerances UNI 5307-63								
Dimensions	< 6	> 6-30	> 30-120	> 120-315	> 315-1000	> 1000-2000	> 2000-4000	> 4000
Linear Toli.	± 0.1	± 0.2	± 0.3	± 0.5	± 0.8	± 1.2	± 2	± 3
angular Toli.	± 1'	± 30'	± 20'	± 10' referred to the shortest side				
designed for				R.De Salvo				
draw. by				G. Gennaro-PROMEC				
date				08-09-06		scale 1/2		
title				HAM-OPTICAL BENCH				
AD-LIGO-TRIPLE LVDT				LIGO-D051244-02-D				
date <sup>1</sup> from				237		A 2		