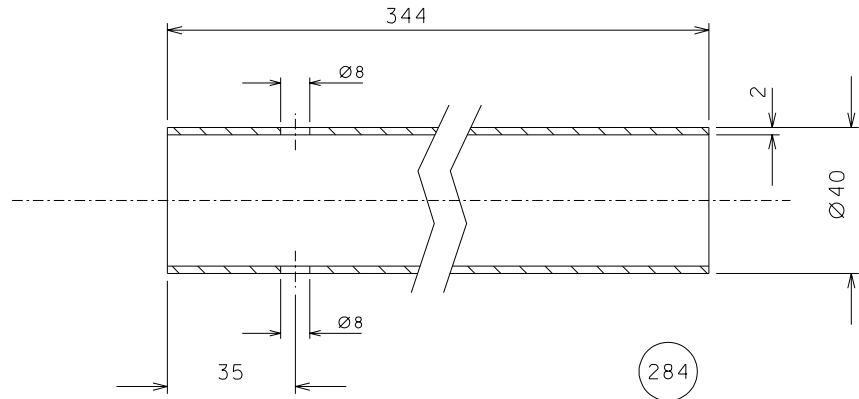
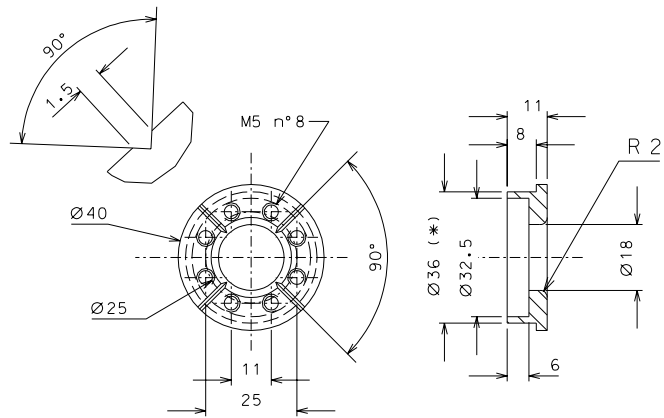


285

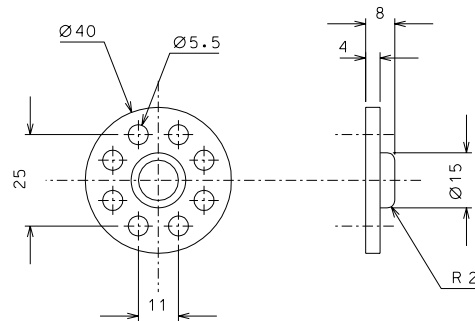


284



282 terminal fit part 282 inside part 284 with right tolerance

Clean UHV before of the mounting



283

ref.	pieces	mat. and treatments	scale	note	date	signature
modifications						
285	1	EN 6082	1/1			
284	1	EN 6082	1/1			
283	1	AISI 304	1/1			
282	1	AISI 304	1/1			
ref.	pieces	mat. and treatments	scale	ref.	pieces	mat. and treatments

General machining tolerances UNI 5307-63						
Dimensions	< 6	> 6-30	> 30-120	> 120-315	> 315-1000	> 1000-2000
Linear Toli.	± 0.1	± 0.2	± 0.3	± 0.5	± 0.8	± 1.2
Angular Toli.	± 1'	± 30'	± 20'	± 10' referred to the shortest side		
designed for R.De Salvo						
LIGO PROJECT			draw. by G. Gennaro-PROMEC			
date 27-09-06			scale 1/1			
title HAM-OPTICAL BENCH			LIGO-D051246-00-D			
CLAMP SPRING			date ¹ from 237			
			A 2			