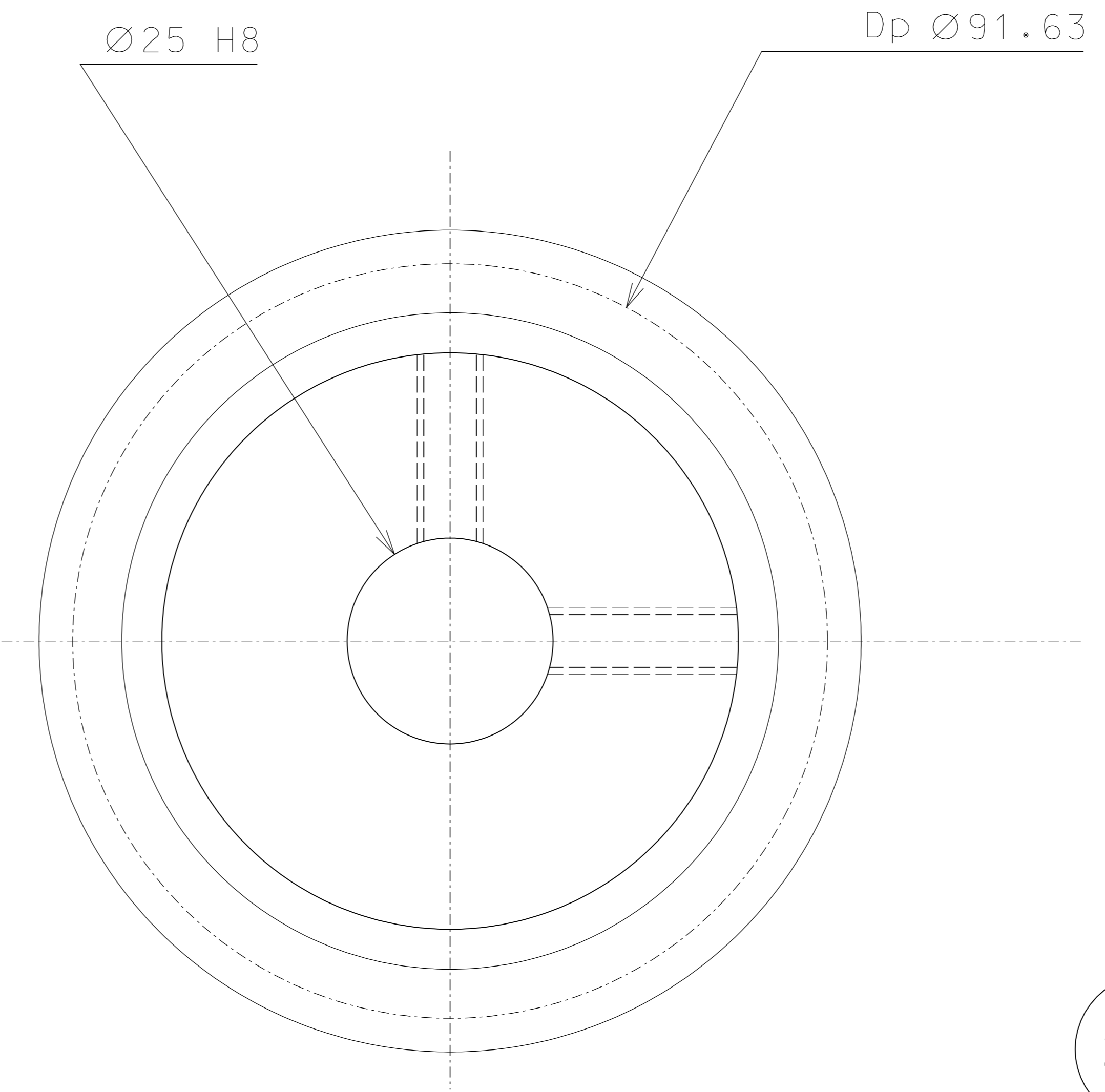
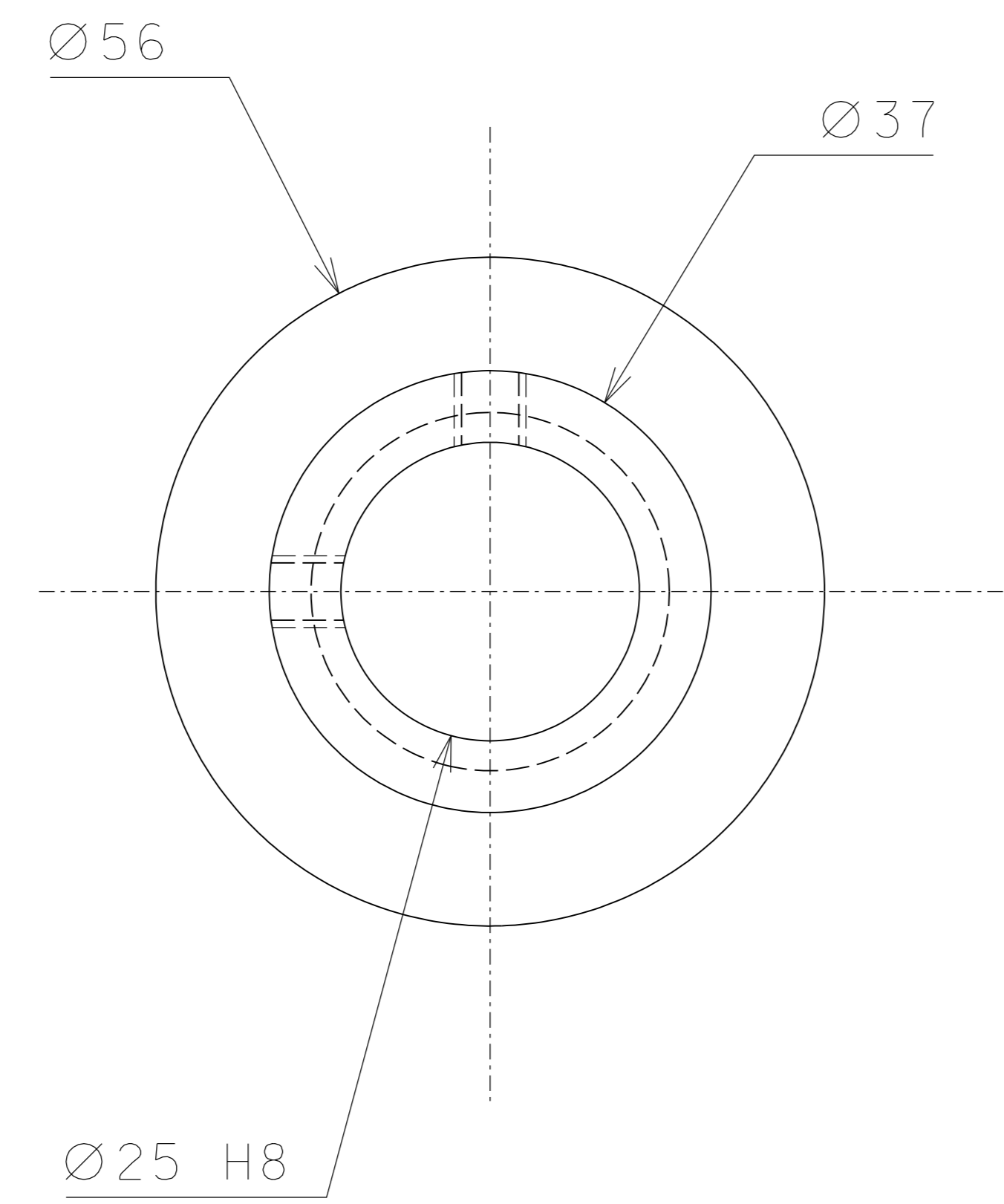
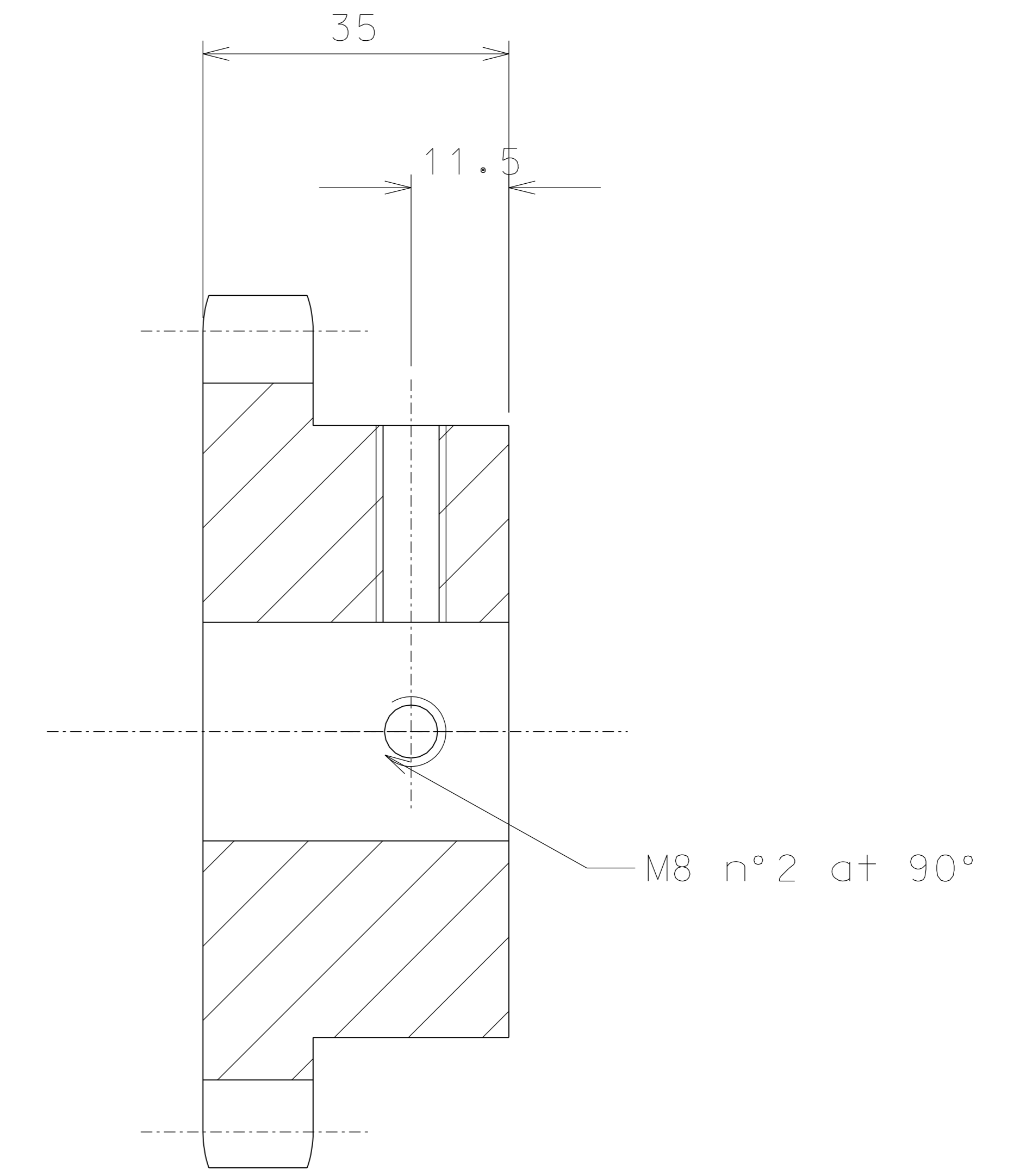


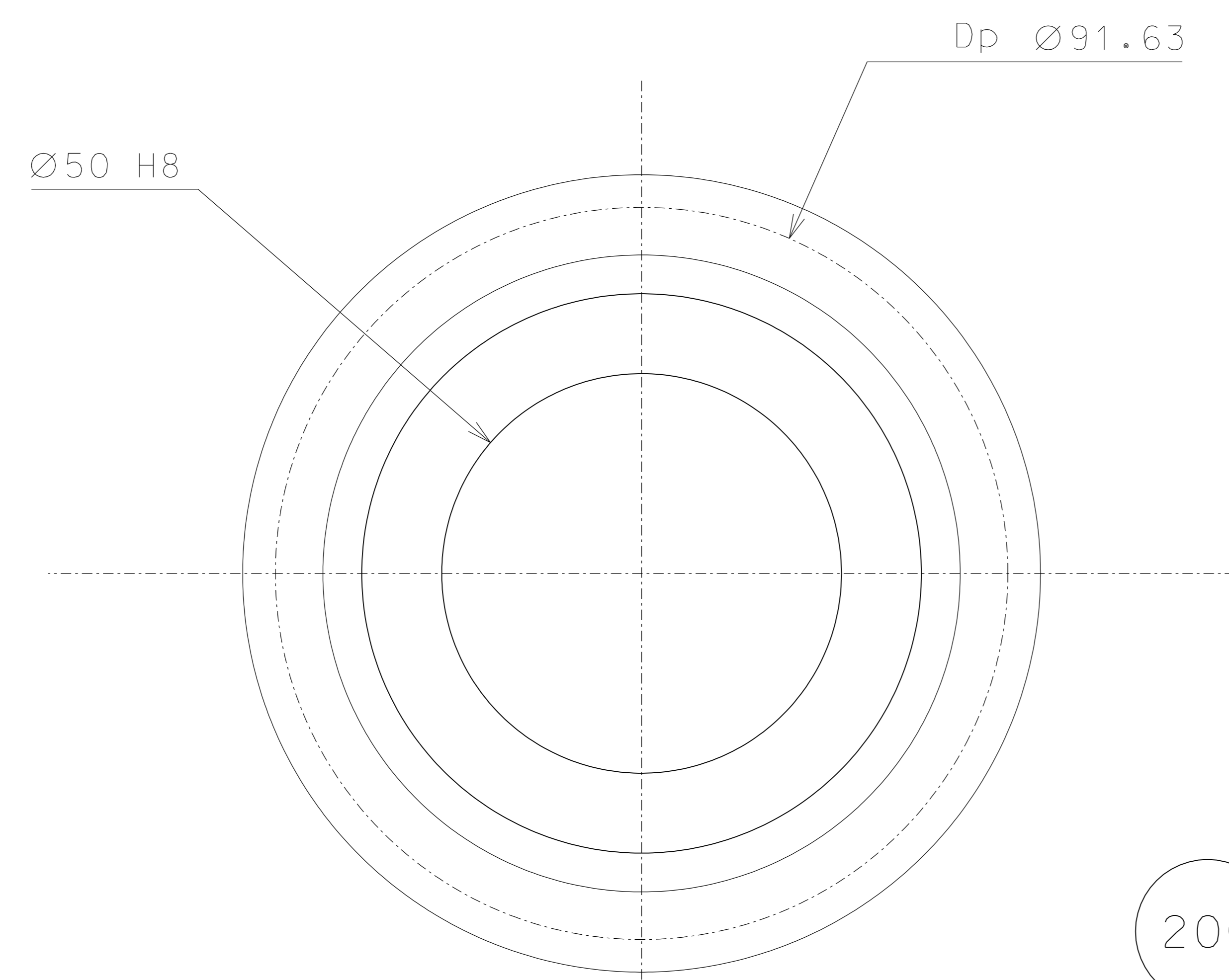
292



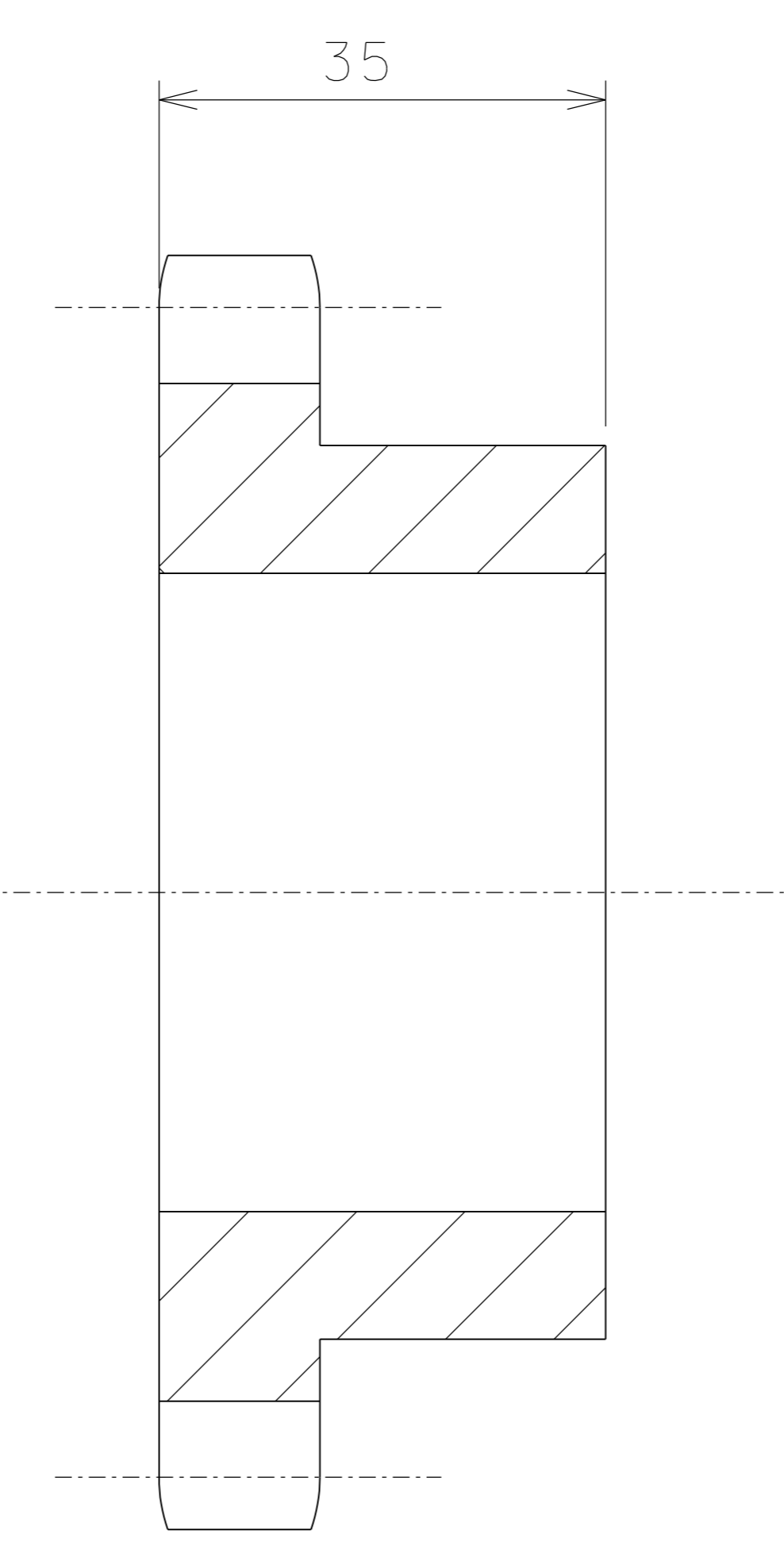
290



modify gear Z=15, Dp=91.63 for chain 12 A-1
see 22 in the drawing 51193



206



modify gear Z=15, Dp=91.63 for chain 12 A-1
see 22 in the drawing 51193

ref.	note	date	signature
	modified numeration table	31-10-06	
modifications			
292	16 EN 6082	1/1	
290	4 carbon steel	1/1	
206	4 carbon steel	1/1	
ref.	pieces	mat. and treatments	scale

General machining tolerances UNI 5307-63							
Dimensions	< 6	> 6-30	> 30-120	> 120-315	> 315-1000	> 1000-2000	> 2000-4000
linear Toll.	± 0.1	± 0.2	± 0.3	± 0.5	± 0.8	± 1.2	± 2
angular Toll.	± 1'	± 30'	± 20'	± 10' referred to the shortest side			

designed for	R.De Salvo	
draw. by	G.Gennaro-PROMECC	
date	16-10-06	scale 1/1
title	HAM OPTICAL BENCH	
detail from	193	A 2