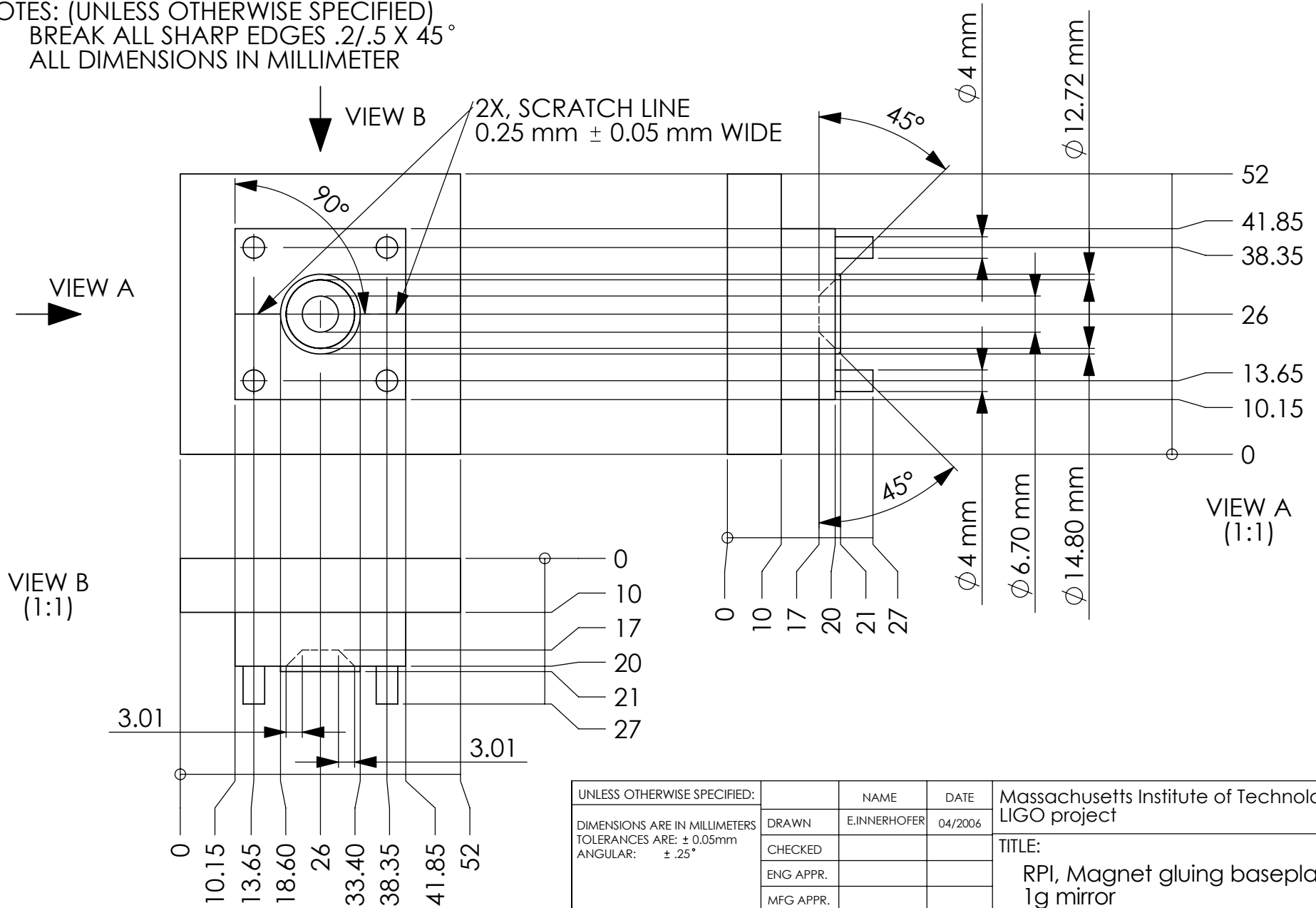


- NOTES: (UNLESS OTHERWISE SPECIFIED)
- BREAK ALL SHARP EDGES  $.2/.5 \times 45^\circ$
  - ALL DIMENSIONS IN MILLIMETER



UNLESS OTHERWISE SPECIFIED:	NAME	DATE	Massachusetts Institute of Technology LIGO project	
DIMENSIONS ARE IN MILLIMETERS TOLERANCES ARE: $\pm 0.05$ mm ANGULAR: $\pm .25^\circ$	DRAWN E.INNERHOFER	04/2006	TITLE: RPI, Magnet gluing baseplate, 1g mirror	
INTERPRET GEOMETRIC TOLERANCING PER:	CHECKED		SIZE <b>A</b>	
MATERIAL Aluminum	ENG APPR.		DWG. NO. LIGO-D060126-00-R	
FINISH $\sqrt{32}$	MFG APPR.		REV	
DO NOT SCALE DRAWING	Q.A.		SCALE: 1:1	
	COMMENTS:		SHEET 1 OF 1	