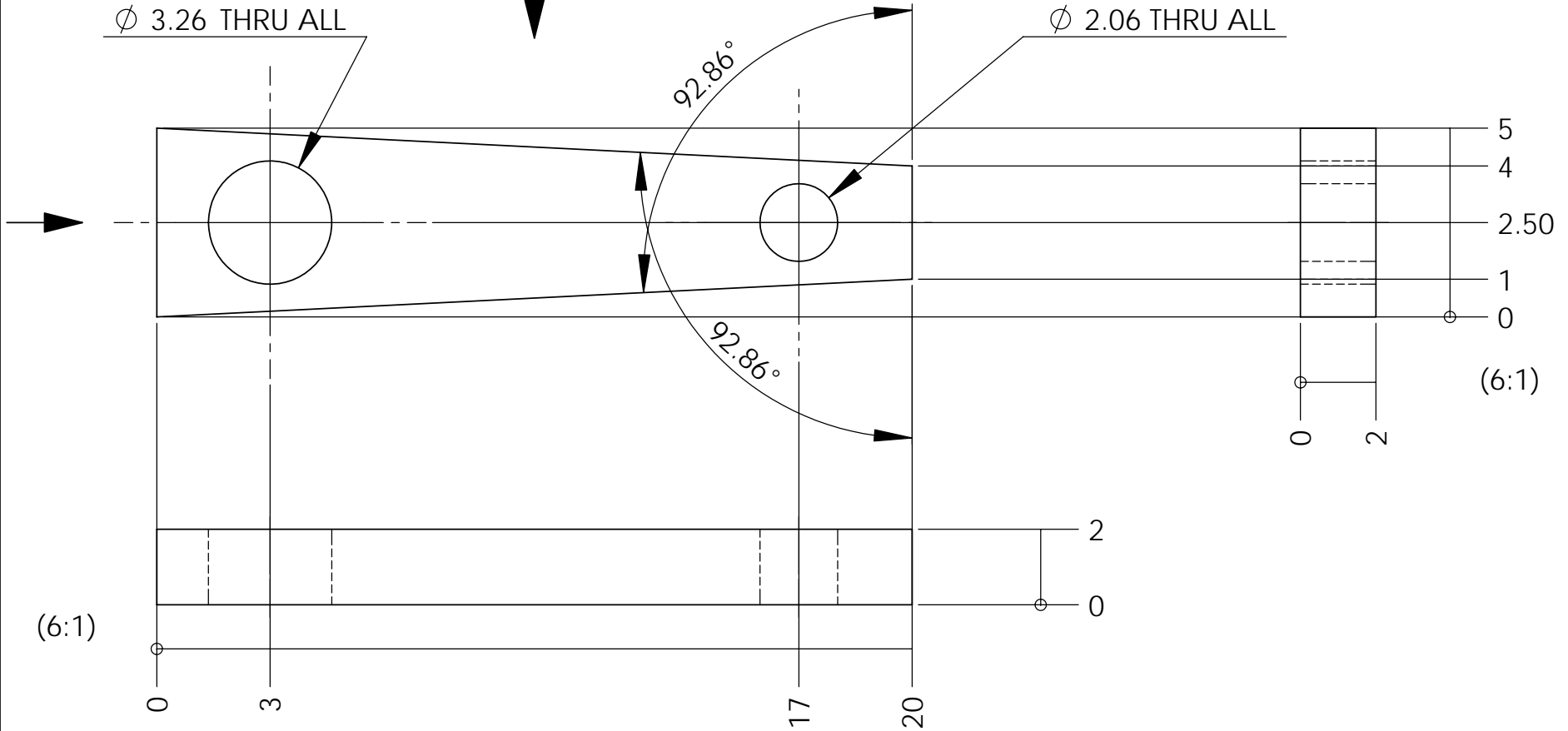


- NOTES: (UNLESS OTHERWISE SPECIFIED)
- BREAK ALL SHARP EDGES .2/.5 X 45°
  - ALL DIMENSIONS IN MILLIMETER



UNLESS OTHERWISE SPECIFIED:		NAME	DATE	Massachusetts Institute of Technology LIGO project		
DIMENSIONS ARE IN MILLIMETERS TOLERANCES ARE: $\pm 0.05\text{mm}$ ANGULAR: $\pm .25^\circ$	DRAWN	E.INNERHOFER	05/2006	TITLE:		
	CHECKED			RPI, OSEM-Optics-Gluing- Fixture-Clamp		
	ENG APPR.					
	MFG APPR.					
INTERPRET GEOMETRIC TOLERANCING PER:		Q.A.				
MATERIAL Aluminum	COMMENTS:			SIZE	DWG. NO.	REV
FINISH $\sqrt{64}$				<b>A</b>	LIGO-D060173-00-R	00
DO NOT SCALE DRAWING				SCALE: 6:1		SHEET 1 OF 1