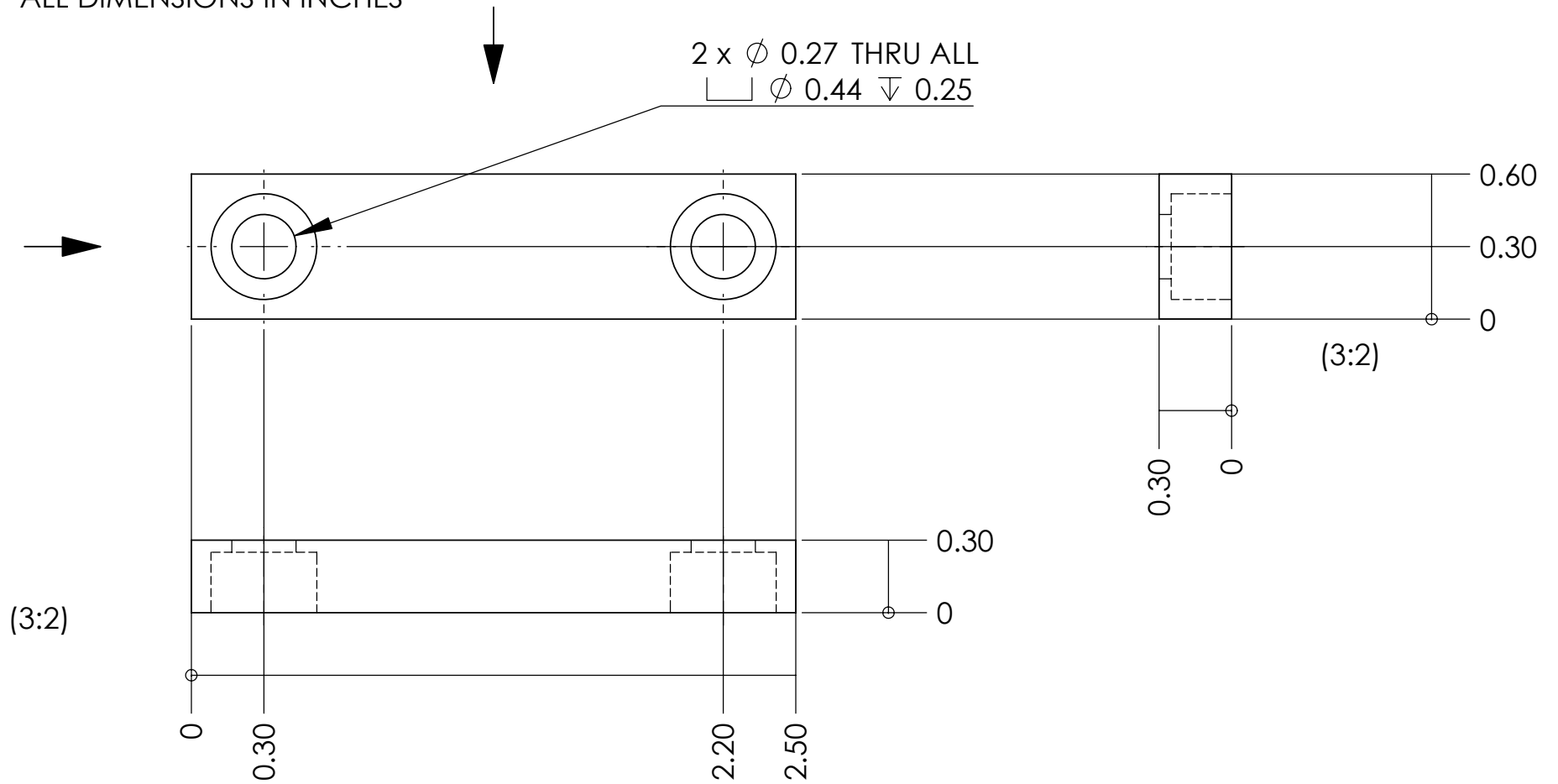


NOTES: (UNLESS OTHERWISE SPECIFIED)

1. BREAK ALL SHARP EDGES .01/.02 X 45°
2. ALL DIMENSIONS IN INCHES



UNLESS OTHERWISE SPECIFIED:		NAME	DATE	Massachusetts Institute of Technology LIGO project	
DIMENSIONS ARE IN INCHES TOLERANCES ARE: $\pm$ 5/1000 INCH ANGULAR: $\pm$ .25°	DRAWN	E.INNERHOFER	05/2006	TITLE:	
	CHECKED			25pin in-vacuum D-sub holder- top-plate	
	ENG APPR.				
	MFG APPR.				
INTERPRET GEOMETRIC TOLERANCING PER:	Q.A.				
MATERIAL Aluminum	COMMENTS:			SIZE	DWG. NO.
FINISH 64/				<b>A</b>	LIGO-D060178-00-R
DO NOT SCALE DRAWING				REV	00
				SCALE: 3:2	SHEET 1 OF 1