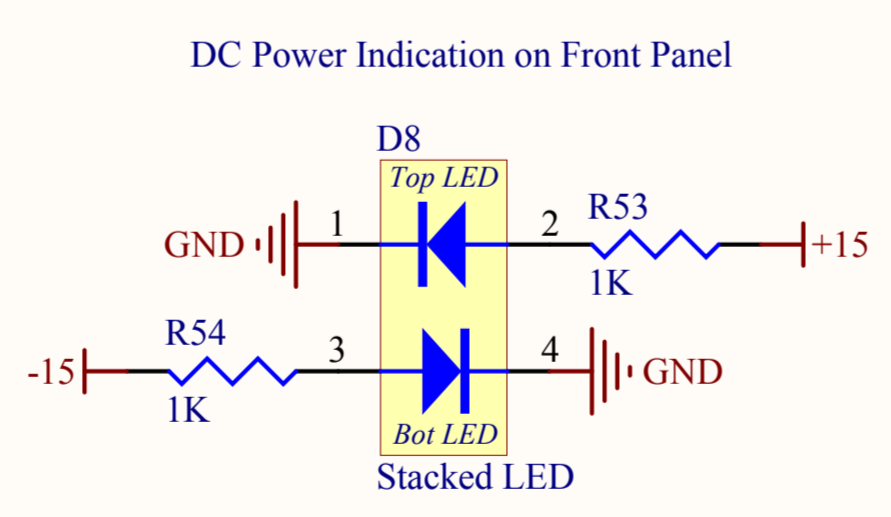
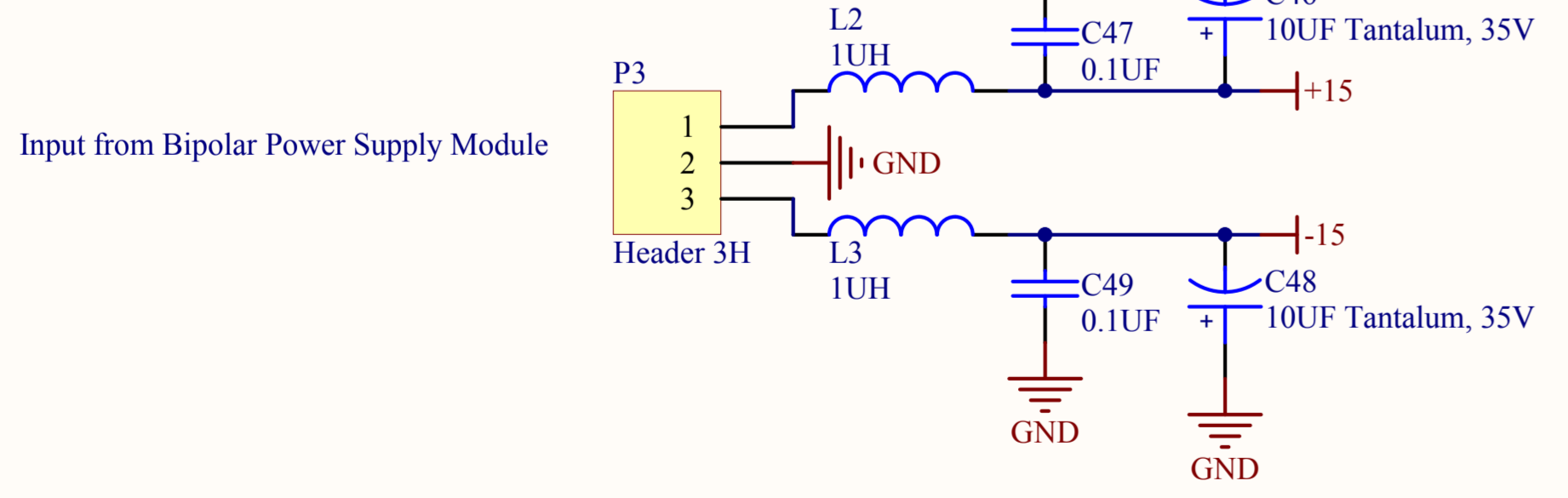
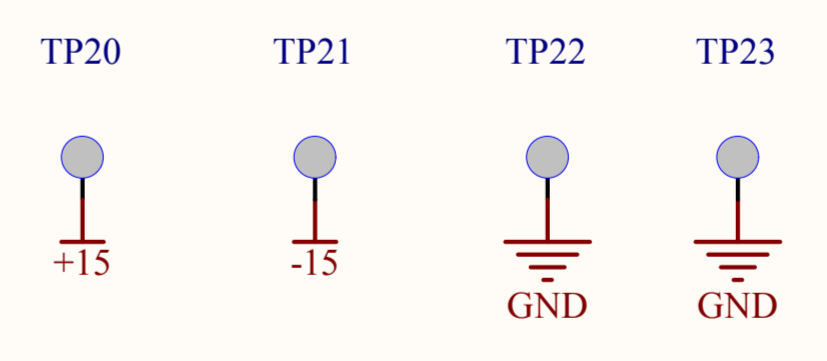


Board Quiescent Current

+/- 15 volt rails, +/- 90mA
 + 300 Volt Rail, 1mA



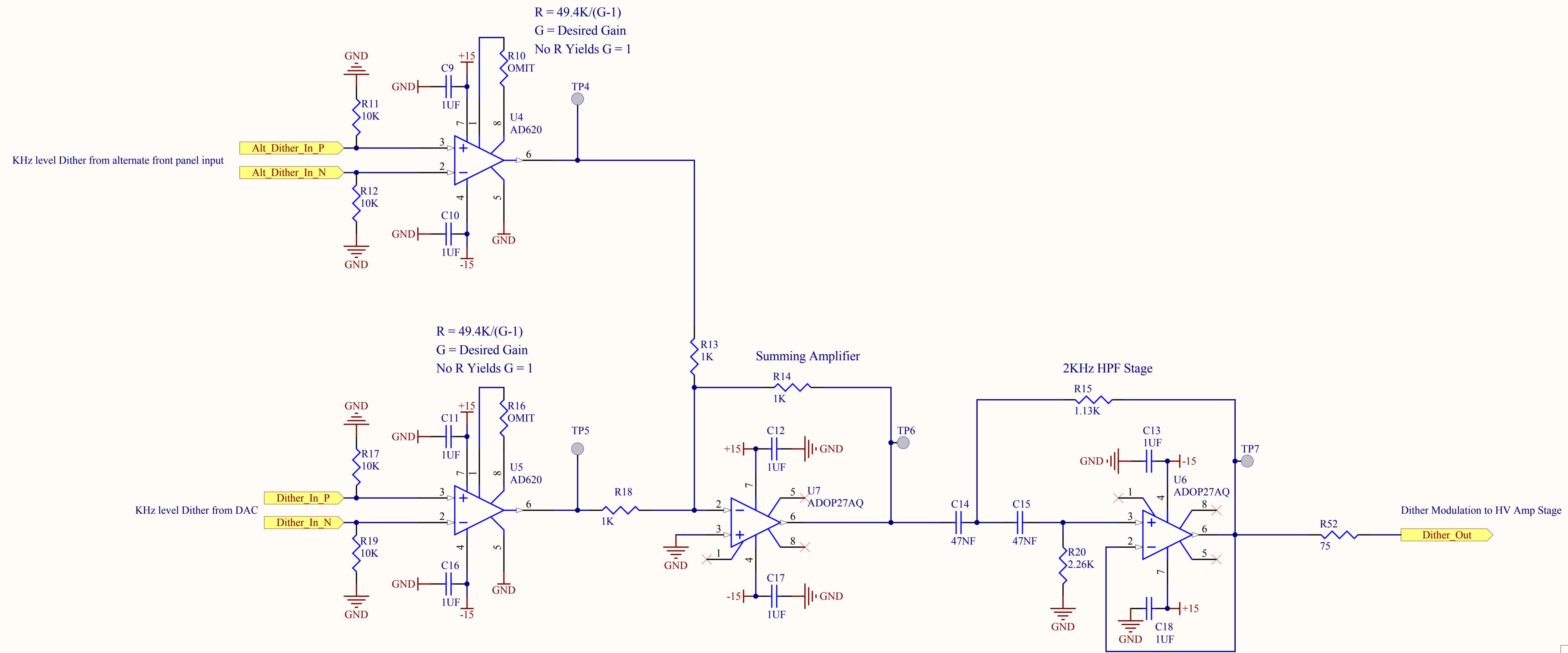
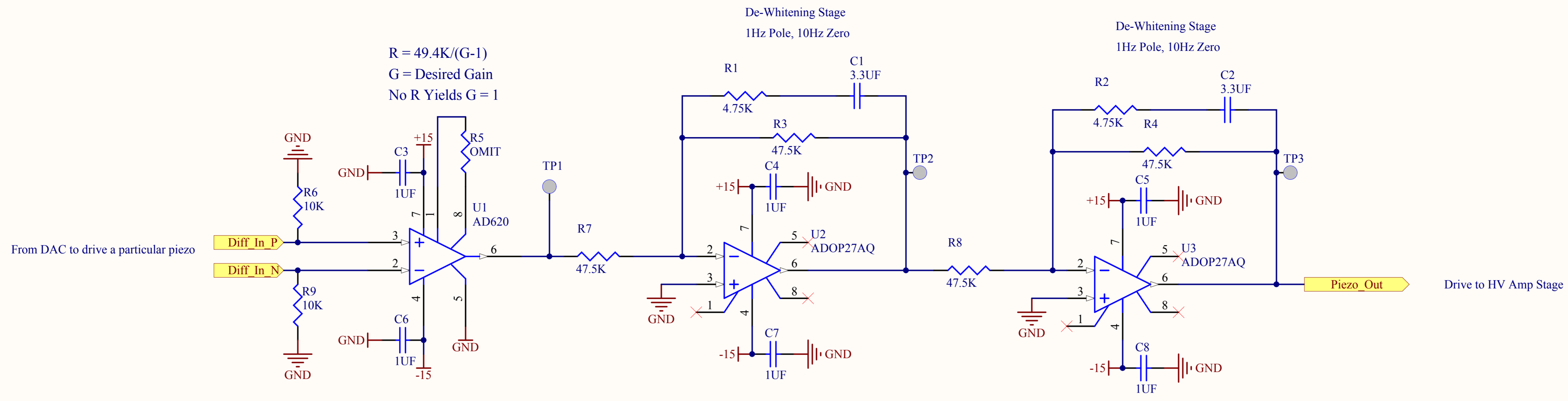
D8 Footprint is incorrect as shown, must be fixed on next revision



Revision History:
 Rev. A: Initial release
 Rev. B: Correction of footprint error from Rev. A
 Rev B1: Changed R22 from 100k to 200k
 Added 1k in feedback of unity gain follower stage, U16 in sheet 3 of 4. This was to correct abnormal noise performance in this opamp
 Rev B2: Changed R55 from 49.9K to 10K for more signal amplification. Changed R36 from 1K to OMIT as it is not needed.
MUST FIX D8 IF BOARD IS REVISED

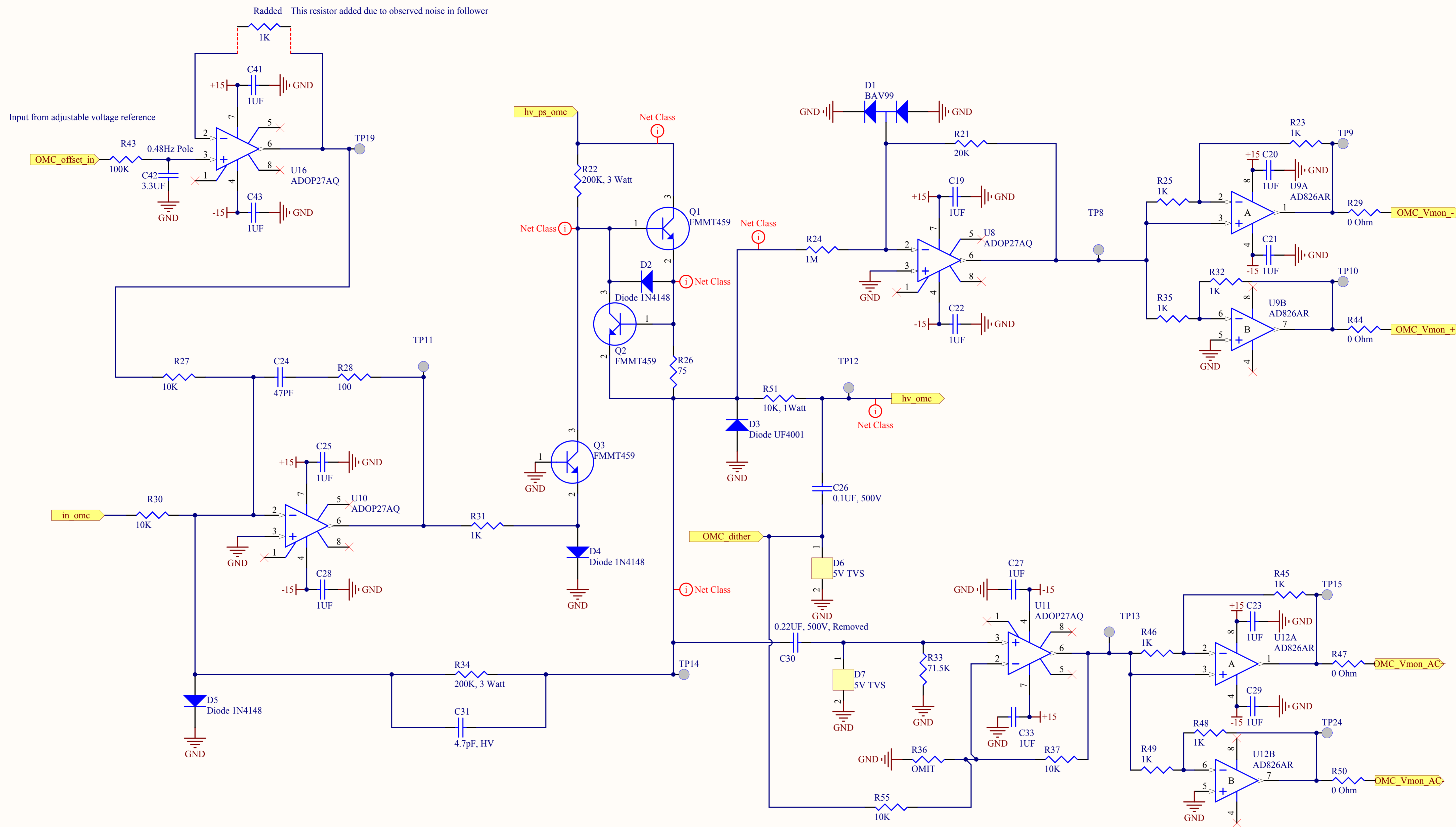
Last Edited: 26 September 2008

Title OMC Piezo Driver Overview		LIGO Laboratory California Institute of Technology Massachusetts Institute of Technology		LIGO	
Size: B	DCC Number: D060283	Revision: B2	Engineer: R. Abbott	Date: 9/26/2008	Time: 12:24:03 PM
File: C:\Rich's Files\Mycadfiles\ISC\DC_readout\PiezoDriver\OMC_overview_b.SchDoc					Sheet 1 of 4



Last Edited: 26 September 2008

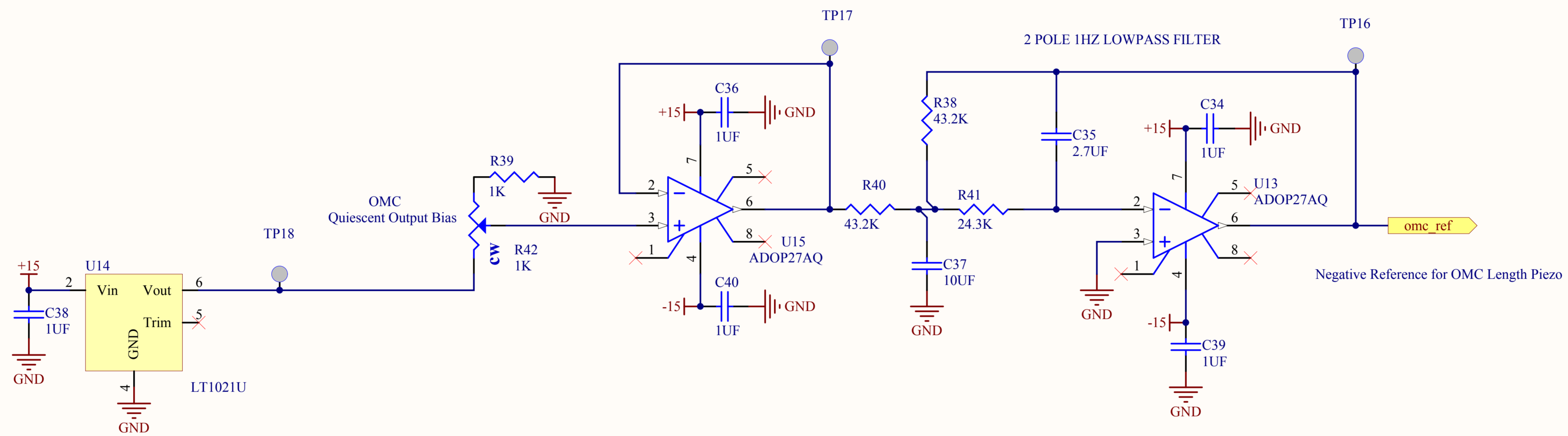
Title OMC Differential Receiver		LIGO Laboratory California Institute of Technology Massachusetts Institute of Technology		LIGO
Size: B	DCC Number: D060283	Revision: B2	Engineer: R. Abbott	Date: 9/26/2008
File: C:\Rich's Files\Mycadfiles\ISC\DC_readout\PiezoDriver\diff_rec_OMC_b.SchDoc				Time: 12:24:03 PM
				Sheet 2 of 4



Radded This resistor added due to observed noise in follower

Last Edited: 26 September 2008

Title		LIGO Laboratory California Institute of Technology Massachusetts Institute of Technology		LIGO	
Size: B	DCC Number: D060283	Revision: B2	Engineer: R. Abbott	Date: 9/26/2008	Time: 12:24:04 PM
File: C:\Rich's Files\MyCADfiles\ISC\DC_readout\PiezoDriver\HV_driver_b.SchDoc			Sheet 3 of 4		



Last Edited: 26 September 2008

Title		LIGO Laboratory California Institute of Technology Massachusetts Institute of Technology		LIGO	
Size: B	DCC Number: D060283	Revision: B2	Engineer: R. Abbott	Date: 9/26/2008	
File: C:\Rich's Files\Mycadfiles\ISC\DC_readout\PiezoDriver\ref_filter_OMC_b.SchDoc				Time: 12:24:04 PM	Sheet 4 of 4

D060283 Rev. B Piezo Driver SN [Redacted]

