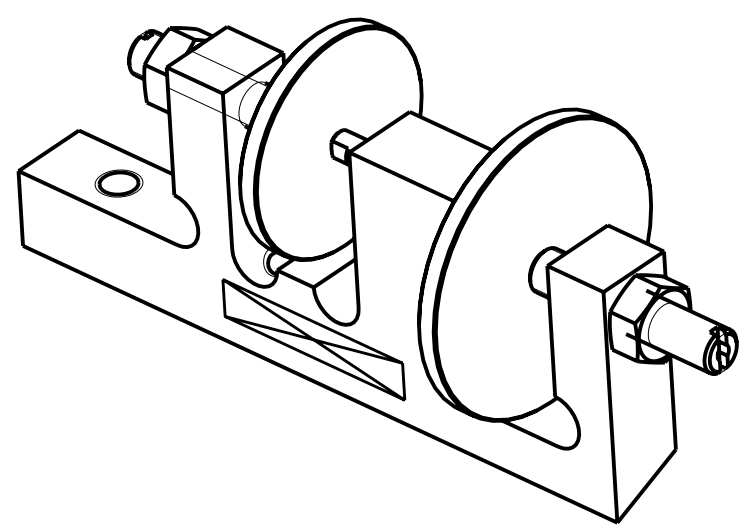
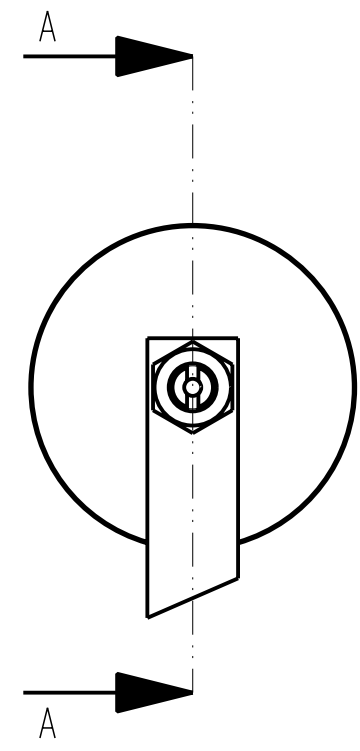
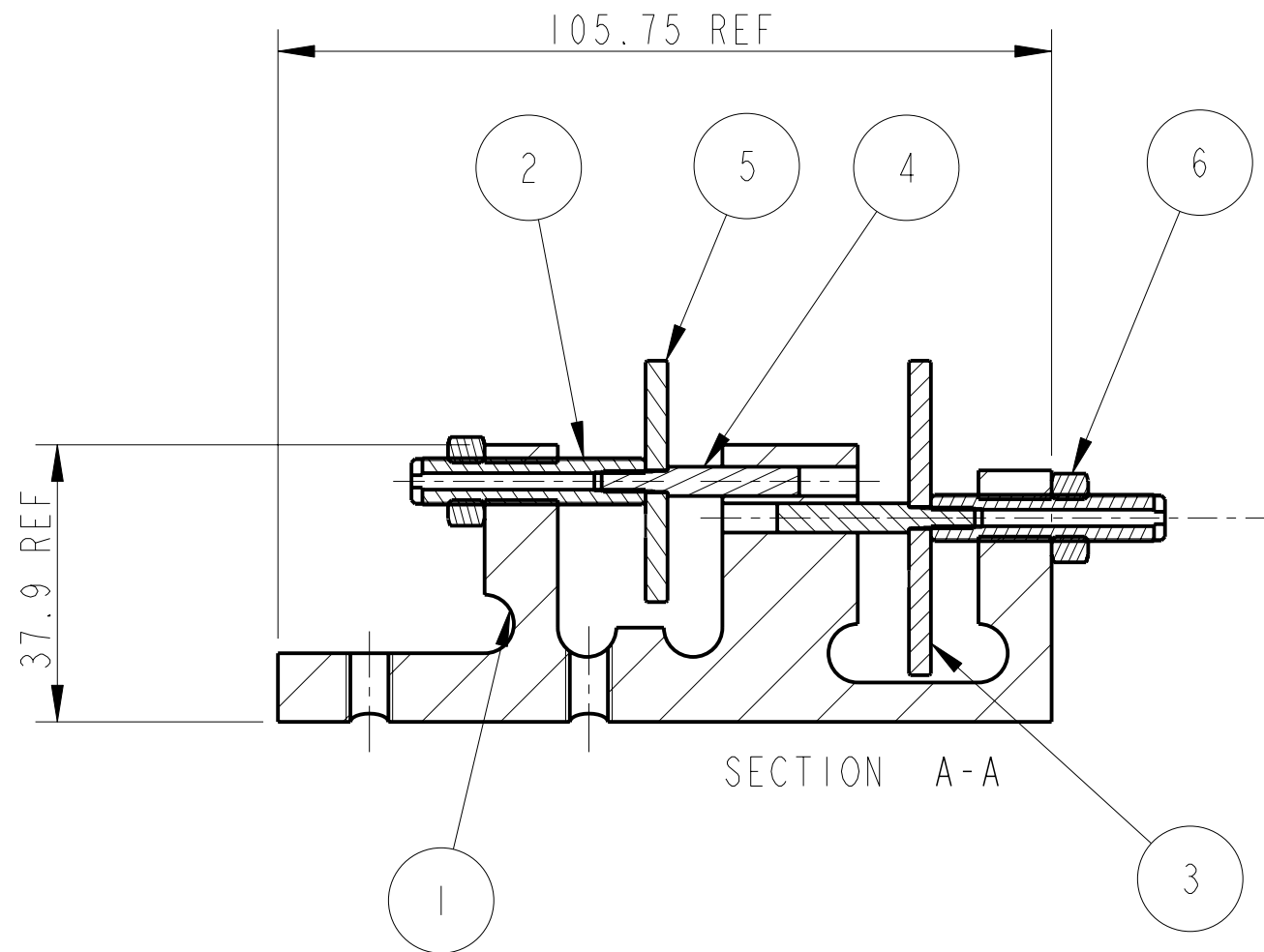


REV.	DATE	DCN #	DRAWING TREE #
A	30-OCT-06	E060260-00	



ITEM	QTY	SPARE	TOTAL	PART NUMBER	DESCRIPTION	MATERIALS
1	1			D060465	UI MASS BK STOP ASSY 1.BRACKET; .	AL. ALLOY: 5083 H4 OR 6061
2	2			D060466	SHAFT; UI MASS STOPS	PH BRONZE: -----
3	1			D060467	DISC - LARGE; UI MASS STOPS	ST. STEEL: 303/304/316
4	2			D060483	LOCKING PIN; (UI MASS STOPS)	ST. STEEL: 303/304/316
5	1			D060484	DISC - SMALL; (UI MASS STOPS)	ST. STEEL: 303/304/316
6	2				1/4" 20 UNC NUT; .	ST STEEL 300 SERIES

NOTES: (UNLESS OTHERWISE SPECIFIED)

- REMOVE ALL SHARP EDGES, R.02 MIN.
- DO NOT SCALE FROM DRAWING.
- ALL MACHINING FLUIDS SHALL BE WATER SOLUBLE AND FREE OF SULFUR, CHLORINE AND SILICONE, SUCH AS CINCINNATI MILACRON'S CIMTECH 410 (STAINLESS STEEL)
- SCRIBE, ENGRAVE OR STAMP DRAWING PARTNUMBER ON NOTED SURFACE OF PART AND A THREE DIGIT SERIAL NUMBER. SERIAL NUMBERS START AT 001 FOR THE FIRST PART AND PROCEED CONSECUTIVELY. USE .07" HIGH CHARACTERS. EXAMPLE: D020188- 001. A VIBRATORY TOOL MAY BE USED.

DIMENSIONS ARE IN mm [INCHES]
TOLERANCES:
X.XX ±0.2 mm
ANGULAR ±0.25 °

MATERIAL: -----
FINISH: -----
√μm [μin] Ra = -----

	NAME	DATE
DRAWN	NJS/FEL	02/AUG/06
CHECKED	J'OD	--/--/--
APPROVED	---	--/--/--

CALIFORNIA INSTITUTE OF TECHNOLOGY
MASSACHUSETTS INSTITUTE OF TECHNOLOGY
IGR, GLASGOW UNIVERSITY GEO 600 GROUP
RUTHERFORD APPLETON LABORATORIES

SYSTEM **ADVANCED LIGO**
SUB-SYSTEM **SUS**
NEXT ASSY **QUAD N-PTYPE LOWER STRUCTURE**
PART NAME **UI MASS BK STOP ASSY 1**

SIZE **B** DRG. NO. **D060464** REV **A.**
SCALE 1:1 PROJECTION: SHEET 1 OF 1