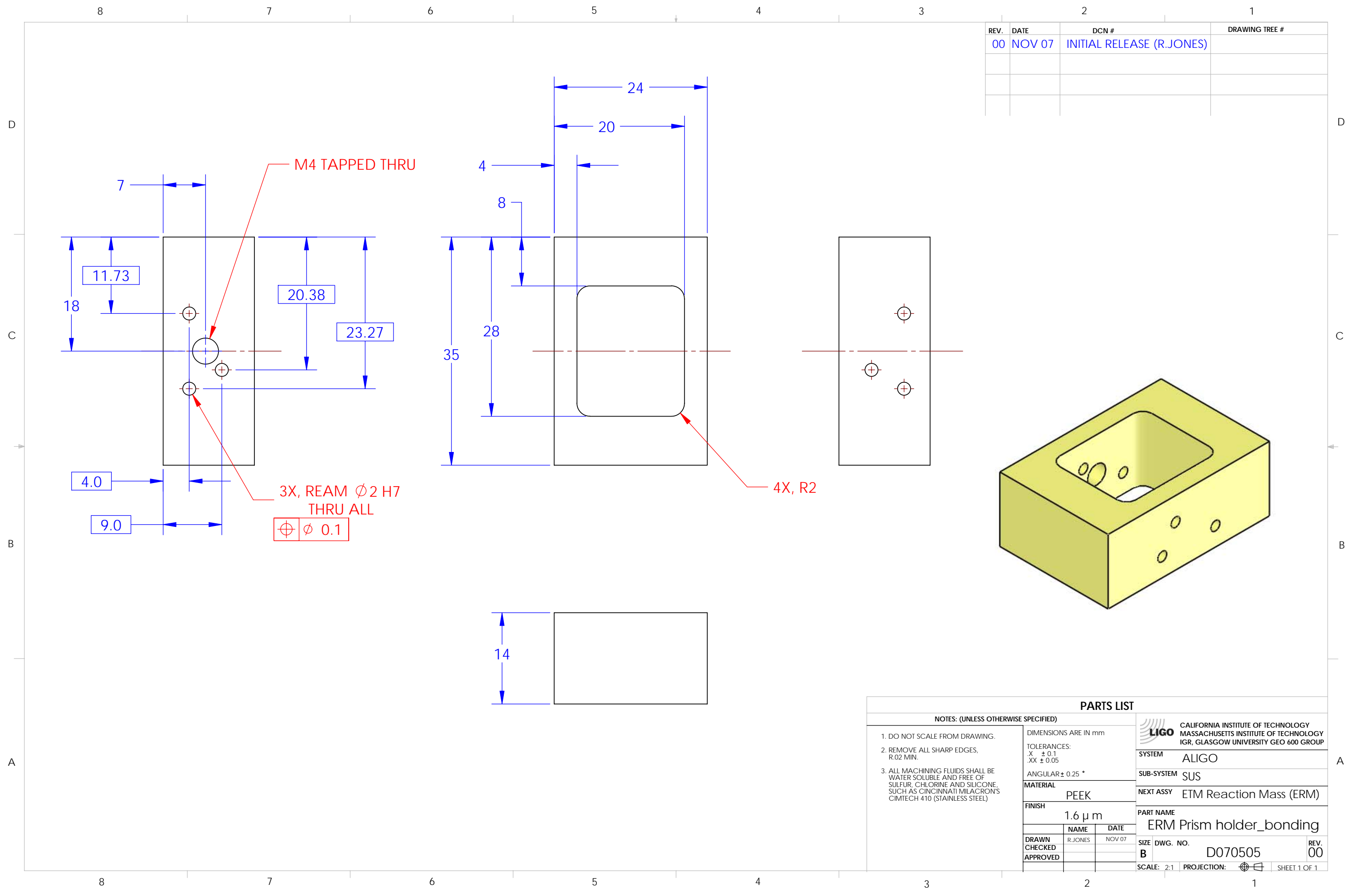


REV.	DATE	DCN #	DRAWING TREE #
00	NOV 07	INITIAL RELEASE (R.JONES)	



M4 TAPPED THRU

3X, REAM Ø2 H7 THRU ALL  
 $\text{⊕} \text{ } \phi \text{ } 0.1$

4X, R2

**PARTS LIST**

NOTES: (UNLESS OTHERWISE SPECIFIED)		DIMENSIONS ARE IN mm		CALIFORNIA INSTITUTE OF TECHNOLOGY MASSACHUSETTS INSTITUTE OF TECHNOLOGY IGR, GLASGOW UNIVERSITY GEO 600 GROUP	
1. DO NOT SCALE FROM DRAWING.		TOLERANCES:		LIGO	
2. REMOVE ALL SHARP EDGES, R.02 MIN.		.X ± 0.1		SYSTEM ALIGO	
3. ALL MACHINING FLUIDS SHALL BE WATER SOLUBLE AND FREE OF SULFUR, CHLORINE AND SILICONE, SUCH AS CINCINNATI MILACRON'S CIMTECH 410 (STAINLESS STEEL)		.XX ± 0.05		SUB-SYSTEM SUS	
		ANGULAR ± 0.25 °		NEXT ASSY ETM Reaction Mass (ERM)	
		MATERIAL PEEK		PART NAME ERM Prism holder_bonding	
		FINISH 1.6 μm		DRAWN R.JONES	
				CHECKED NOV 07	
				APPROVED	
				SIZE B	DWG. NO. D070505
				SCALE: 2:1	PROJECTION: $\text{⊕}$
					SHEET 1 OF 1