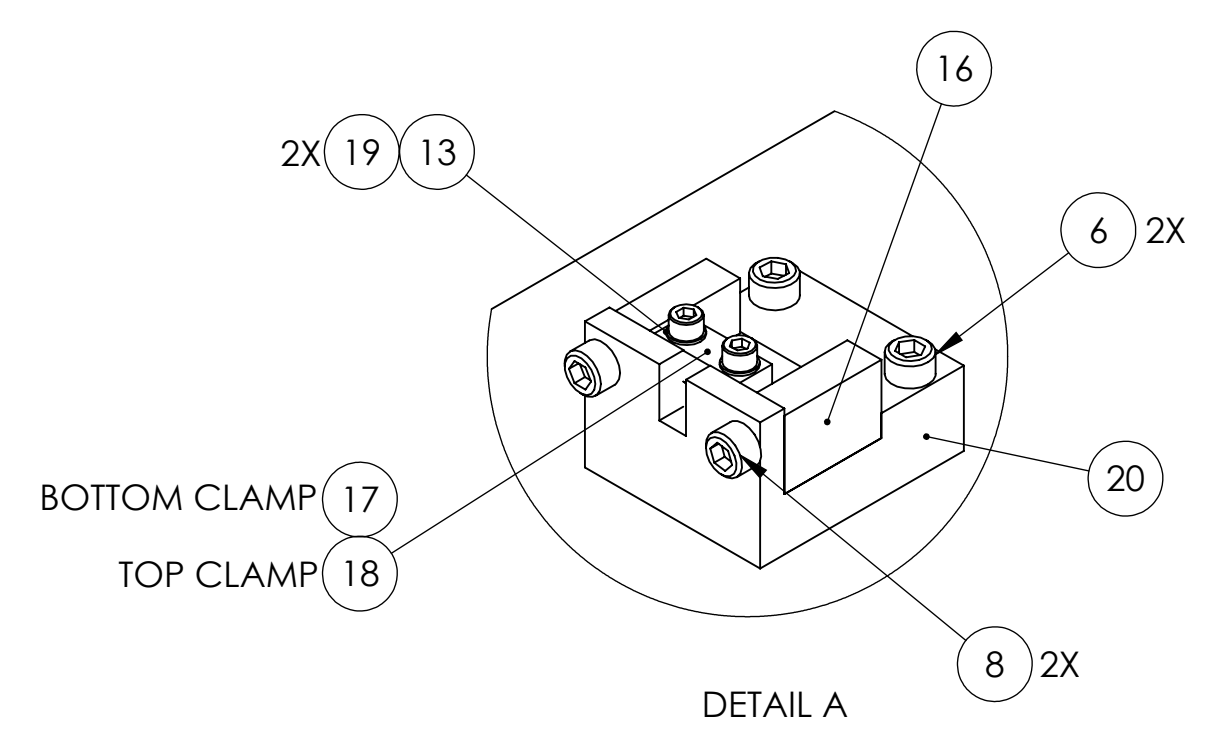
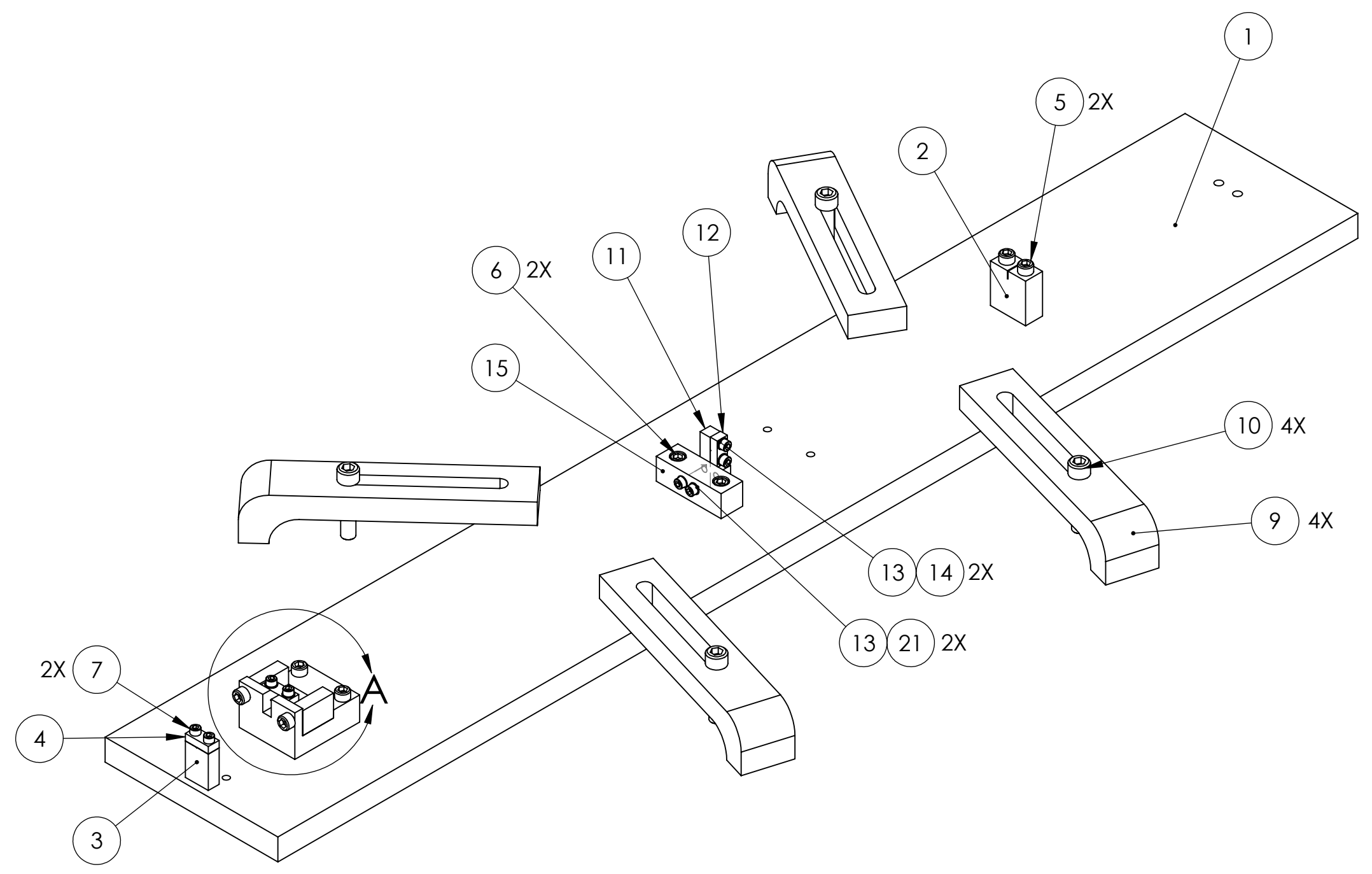


REV.	DATE	DCN #	DRAWING TREE #
A	28 MAR 2008	E080113-00	



ITEM NO.	REQ	SPARE	TOTAL	PART NUMBER	DESCRIPTION	MATERIAL
21	2		2	-	SCREW, SOCKET HEAD CAP, #4-40 X 0.75 LG	300 SSSL, AG-PLTD
20	1		1	D070038	BAR JIG STEP PLATE	6061-T6-AI
19	2		2	-	SCREW, SOCKET HEAD CAP, #4-40 X 0.5 LG	300 SSSL
18	REF		0	D020139	UPPER MASS WIRE CLAMP PLATE	300 SSSL
17	REF		0	D020309	UPPER MASS WIRE CLAMP PLATE (WITH GROOVE)	300 SSSL
16	REF		0	D070030	Upper Mass Clamp Block MC	6061-T6-AI
15	1		1	D070023	ANGLED ATTACHMENT FOR UPPER BLADE WIRE CLAMP	6061-T6-AI
14	2		2	-	SCREW, SOCKET HEAD CAP, #4-40 X 0.3125 LG	300 SSSL, AG-PLTD
13	6		6	-	WASHER, FLAT, #4	300 SSSL
12	REF		0	D030042	UPPER BLADE WIRE CLAMP PLATE	300 SSSL
11	REF		0	D070022	TOP BLADE WIRE CLAMP	300 SSSL
10	4		4	-	SCREW, SOCKET HEAD CAP, 1/4-20 X 1.125 LG	300 SSSL
9	4		4	D980184	LOS CLAMP LONG	300 SSSL
8	2		2	-	SCREW, SOCKET HEAD CAP, #8-32 X 0.75 LG	300 SSSL
7	2		2	-	SCREW, SOCKET HEAD CAP, #4-40 X 1.25 LG	300 SSSL
6	4		4	-	SCREW, SOCKET HEAD CAP, #8-32 X 0.625 LG	300 SSSL
5	2		2	-	SCREW, SOCKET HEAD CAP, #8-32 X 1.125 LG	300 SSSL
4	1		1	D020380	WIRE START CLAMP UPPER	6061-T6-AI
3	1		1	D020540	WIRE START MATCHED HEIGHT (GROOVED CLAMP)	6061-T6-AI
2	1		1	D020440	UPPER WIRE HEIGHT BALANCE	6061-T6-AI
1	1		1	D080150	BAR JIG PLATE, UPPER WIRES	6061-T6-AI

NOTES: (UNLESS OTHERWISE SPECIFIED)

- DO NOT SCALE FROM DRAWING.
- REMOVE ALL SHARP EDGES, R.02 MAX.
- ALL MACHINING FLUIDS SHALL BE WATER SOLUBLE AND FREE OF SULFUR, CHLORINE AND SILICONE.

DIMENSIONS ARE IN INCHES
TOLERANCES:
.XX ±
.XXX ±
ANGULAR ± °

MATERIAL

FINISH

SCALE: NTS **PROJECTION:**

PARTS LIST

CALIFORNIA INSTITUTE OF TECHNOLOGY
MASSACHUSETTS INSTITUTE OF TECHNOLOGY
IGR, GLASGOW UNIVERSITY GEO 600 GROUP

SYSTEM ADVANCED LIGO
SUB-SYSTEM SUS
NEXT ASSY -

PART NAME
JIG ASSEMBLY, UPPER WIRES (LLO)

NAME	DATE	SIZE	DWG. NO.	REV.
M. MEYER	27 MAR 2008	C	D080151	A
D. BRIDGES	28 MAR 2008			

DRAWN M. MEYER
CHECKED D. BRIDGES
APPROVED

SCALE: NTS PROJECTION: SHEET 1 OF 1