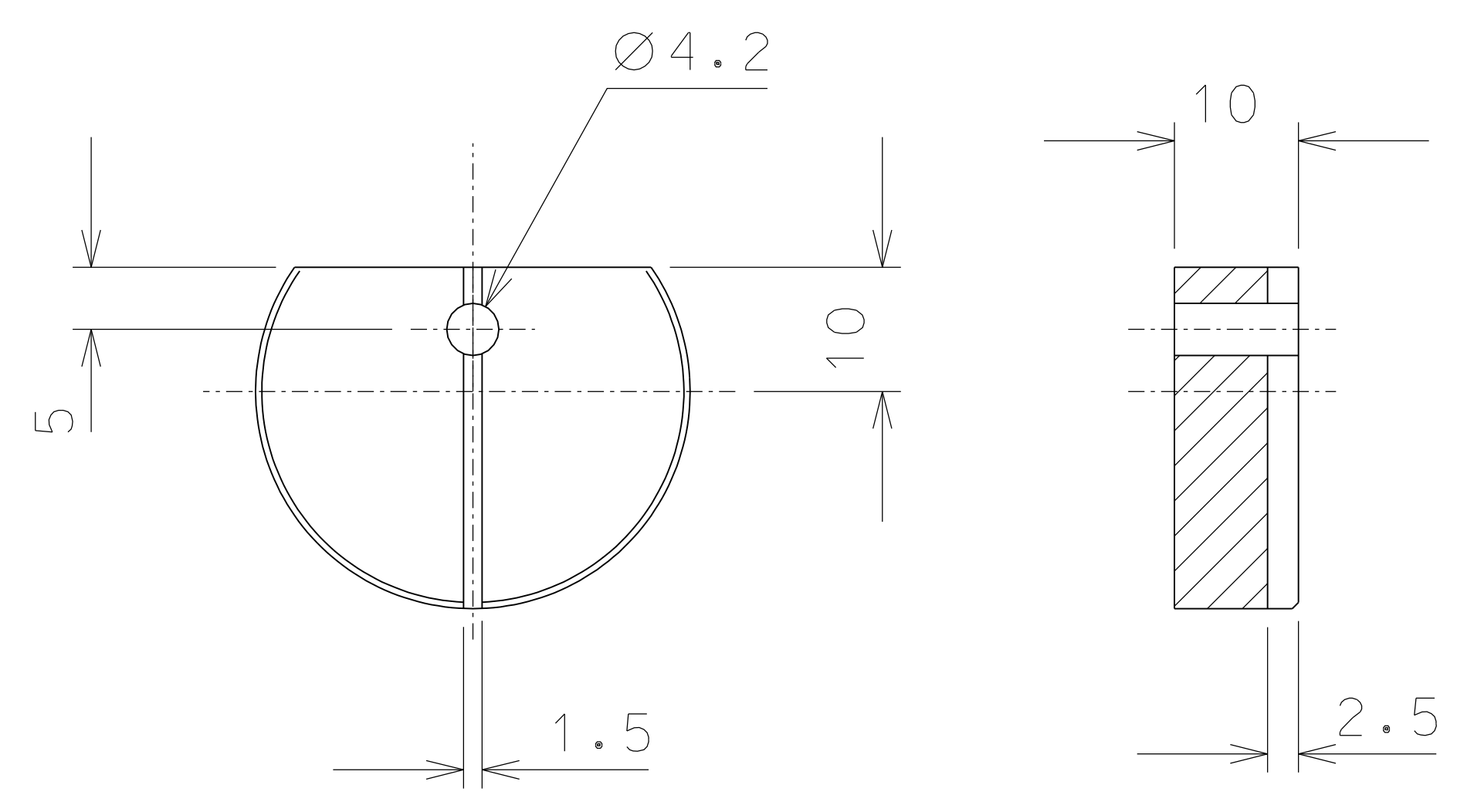


10



17

ref.	note	date	signature
modifications			
17	2	bronze B14	1/1
10	1	bronze B14	1/1
ref.	pieces	mat. and treatments	scale

General machining tolerances UNI 5307-63								
Dimensions	< 6	> 6-30	> 30-120	> 120-315	> 315-1000	> 1000-2000	> 2000-4000	> 4000
linear Toll.	± 0.1	± 0.2	± 0.3	± 0.5	± 0.8	± 1.2	± 2	± 3
angular Toll.	± 1	± 30'	± 20'	± 10' referred to the shortest side				

	designed for		R.De Salvo	
	draw. by		G. Gennaro-PROMECC	
	date	8-04-08	scale	1/1
	title		LIGO PROJECT	
TILTMETER		LIGO-D081010-00-D		
DETAILS		detail from	1001	A 2