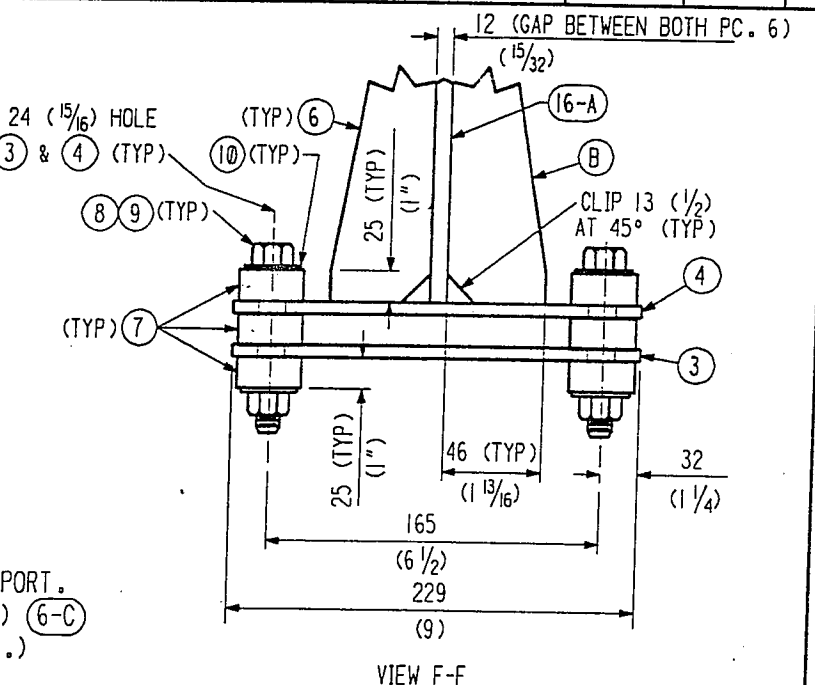


SHIP PC	MARK	ASSM PC	DESCRIPTION	LENGTH MM	SPEC	ID
1	6-A		F.S. FRAME ASSY. (AWAY FROM TERM.)		M4	
	6-1	1	TUBULAR STEEL 102 X 102 X 10 (4 X 4 X 3/8 X 4'-9 3/8) W/ HOLES	1458	A500 GR.B	C
	6-2	2	TUBULAR STEEL 102 X 102 X 10 (4 X 4 X 3/16 X 8 17/32)	217	A500 GR.B	C
	6-3	2	PL 102 X 16 THK (4 X 5/8) W/HOLES	229 (9)	A36	C
2	6-B		FIXED SUPPORT BRACKET ASSEMBLY		M4	
	6-4	2	PL 102 X 19 THK (4 X 3/4) W/HOLES	229 (9)	**	C
	6-5	2	PL SK X 10 (3/8)		**	C
	6-6	4	PL SK X 10 (3/4)		**	C
1	6-C		F.S. FRAME ASSY. (NEAR TERMINATION)		M4	
	6-11	1	TUBULAR STEEL 102 X 102 X 10 (4 X 4 X 1/2 X 4'-9 3/8) W/ HOLES	1458	A500 GR.B	C
	6-2	2	TUBULAR STEEL 102 X 102 X 10 (4 X 4 X 3/16 X 8 17/32)	217	A500 GR.B	C
	6-3	2	PL 102 X 16 THK (4 X 5/8) W/HOLES	229 (9)	A36	C
12	6-7		MICARTA BLOCK 44 X 44 X 25 W/ 22 (7/8) DIA HOLES (1 3/4 X 1 3/4 X 1)		GRADE G11	C
4	6-8		INSULATING SLEEVE 3/4 ID X 1/32 THK (FROM F.H. MALONEY CO.)	102 (4)	NYLAR	C
4	6-9		BOLT 19 (3/4) DIA HVY HEX HD W/ NUT	152 (6)	*	Ac
8	6-10		WASHER 19 (3/4) DIA		F436	Ac



- NOTES:
1. WORK THIS DRAWING WITH DWG. #7 AND #8.
 2. DETAILED AND BILLED FOR ONE (1) FIXED SUPPORT. TOTAL OF (16) FIXED SUPPORTS (NEAR TERM.) (6-C) AND (376) FIXED SUPPORTS (AWAY FROM TERM.) (6-A) REQUIRED.
 3. CARBON STEEL SUPPORT ASS'Y TO BE GALVANIZED PER SPEC. C-SUPT-1.
 4. PROVIDE TUBULAR MEMBERS (THAT ARE CLOSED ON THE ENDS) WITH 6 (1/4) DIA. HOLES OR 13 (1/2) DIA. RATHOLES ON ANY TWO OPPOSITE SIDES AT TUBE ENDS AS REQUIRED FOR GALVANIZING.
 5. MICARTA BLOCK (6-7) MAY CONTAIN A SIGHT HOLE WITH A MAXIMUM DIAMETER OF 6 (1/4) DRILLED ON ONE SIDE PERPENDICULAR TO THE BOLT HOLE AT THE MIDDLE OF THE THICKNESS.

APPROVED
M. Telleian 4-23-97
CBI DATE
J. Jones 7/24/97
CALTECH DATE

CBI SUPPLIER'S / PURCHASER'S NO
LIGO BEAM TUBE
 HANFORD, WA AND LIVINGSTON, LA
 BEAM TUBE FIXED SUPPORT
 ELEVATION
 CUSTOMER'S NO: **WAW CHKD DET DATE 2-9-94**
M.L. TELLEIAN ENGINEERING ASSIGNED
 CONTRACT NO: 953571
 DWG 6 REV 8
LIGO-D950035-08-B

55710006.DGN

INDICATES CHANGE FROM PREVIOUS ISSUE