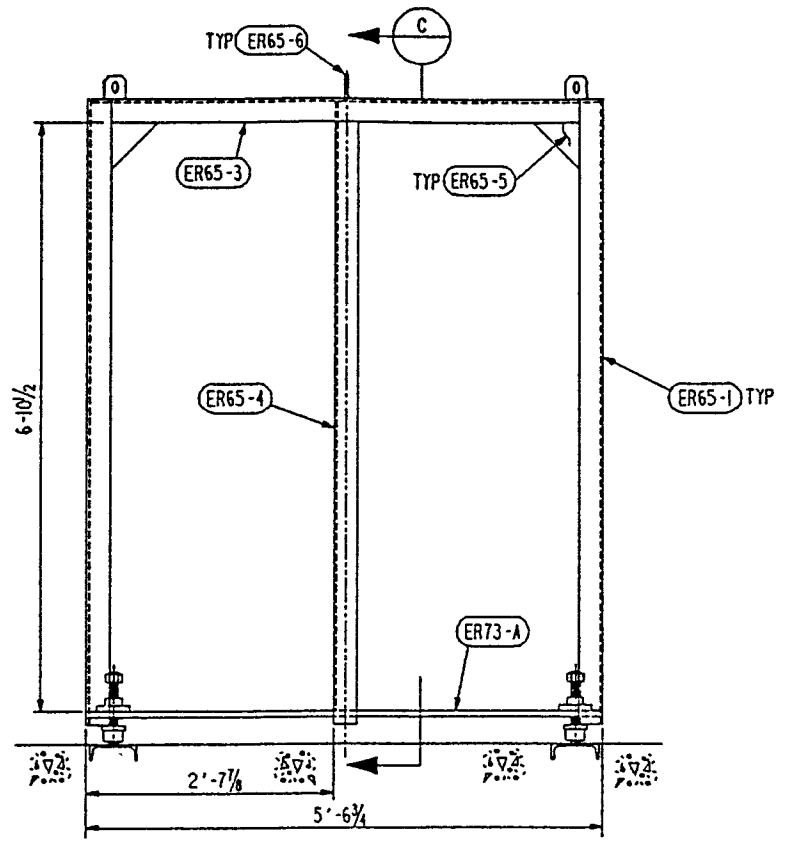
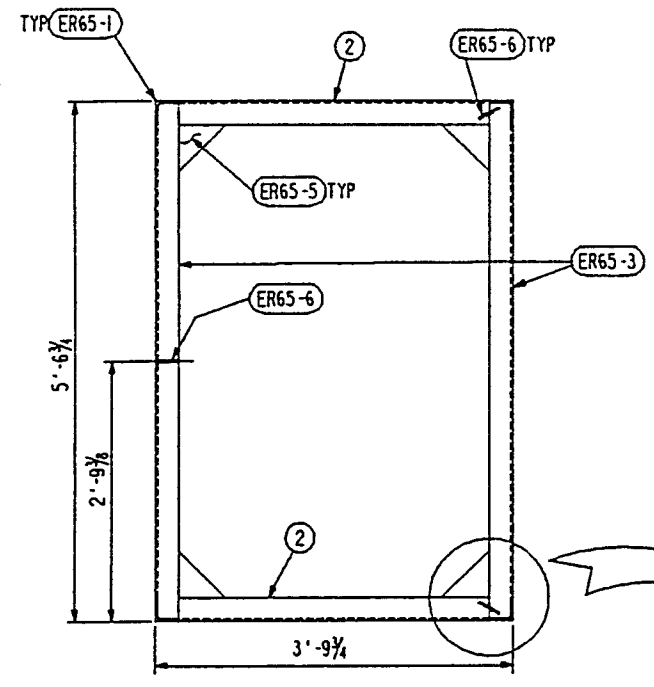


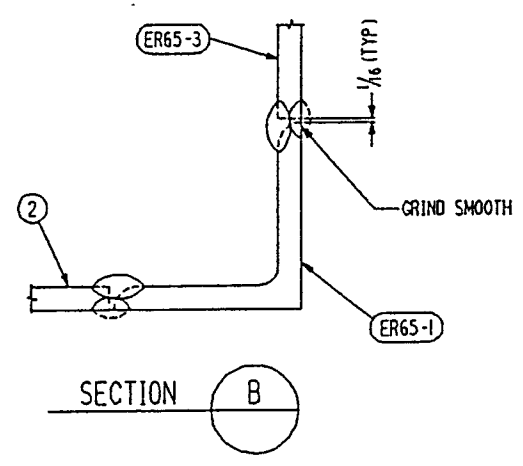
ELEVATION VIEW



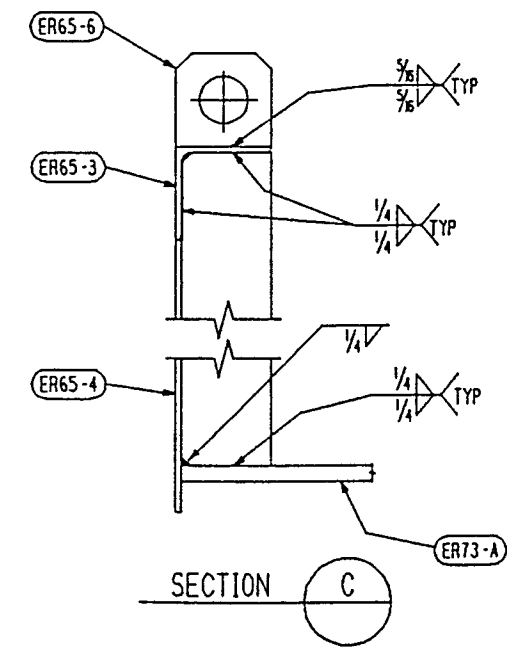
LEFT SIDE VIEW



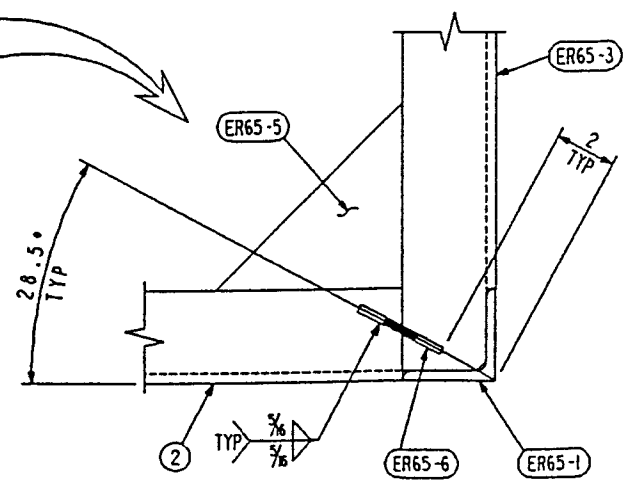
TOP VIEW



SECTION B



SECTION C



INDICATES CHANGE FROM PREVIOUS ISSUE

| # | MARK | ASSY PC | DESCRIPTION | LENGTH | | SPEC | EST WEIGHT |
|----|--------|---------|---------------------------------|--------|--------|------|------------|
| | | | | FT | INCHES | | |
| 1 | ER75-A | | LIFTING FRAME SUBASSEMBLY | | | | 413 |
| 4 | ER65-1 | | L3 X 3 X 3/8 | 7 | 3 | A36 | 208 |
| 2 | ER75-2 | | L3 X 3 X 3/8 | 3 | 3 3/4 | A36 | 48 |
| 2 | ER65-3 | | L3 X 3 X 3/8 X SK | 5 | 6 | A36 | 79 |
| 1 | ER65-4 | | L3 X 3 X 3/8 X SK | 7 | 2 3/8 | A36 | 52 |
| 12 | ER65-5 | | PLATE 3/8 X SK (CF 6 X 0'-6 C2) | | | A36 | 23 |
| 3 | ER65-6 | | PLATE 1/2 X SK | | | A36 | 3 |

* BILLING FOR 1 + 3 REQUIRED.

| | |
|----------------------------|--|
| Date Received: 11/10/95 | LIGO-D950075-02-B Contractor #: CBI ER-75, Rev. 2 |
| TIM #: | LIGO- |
| Date: / / | Approved: |
| TDM # | LIGO- |
| Date: / / | Approved: |
| Gen'l Transmittal | LIGO- |
| Date: / / | Approved: |

APPROVED

M. Jellalian 11/10/95

J. Jones 11/10/95

NOTES:

1. WORK THIS DWG WITH DWG ER-65, ER-72, AND ER-73.

CAD FILE 30212075.DGN

| | | | | | |
|---------------------------------|--|---|--|-------------------|--|
| Supplier's/Purchaser's No. | | Customer's No. | | Contract No. | |
| CBI | | LIGO PROJECT LEAK TEST ARRANGEMENT COLD TRAP END SEAL LIFTING FRAME SUBASSEMBLY | | 930212ER | |
| By: BSA Chkd: RDS Date: 3-15-94 | | By: J. L. RINGELSTETTER Date: 3-31-94 | | Dwg. ER-75 Rev. 2 | |
| Engineering Supervisor | | Engineering Supervisor | | Sheet 2 | |
| LIGO-D950075-02-B | | | | | |