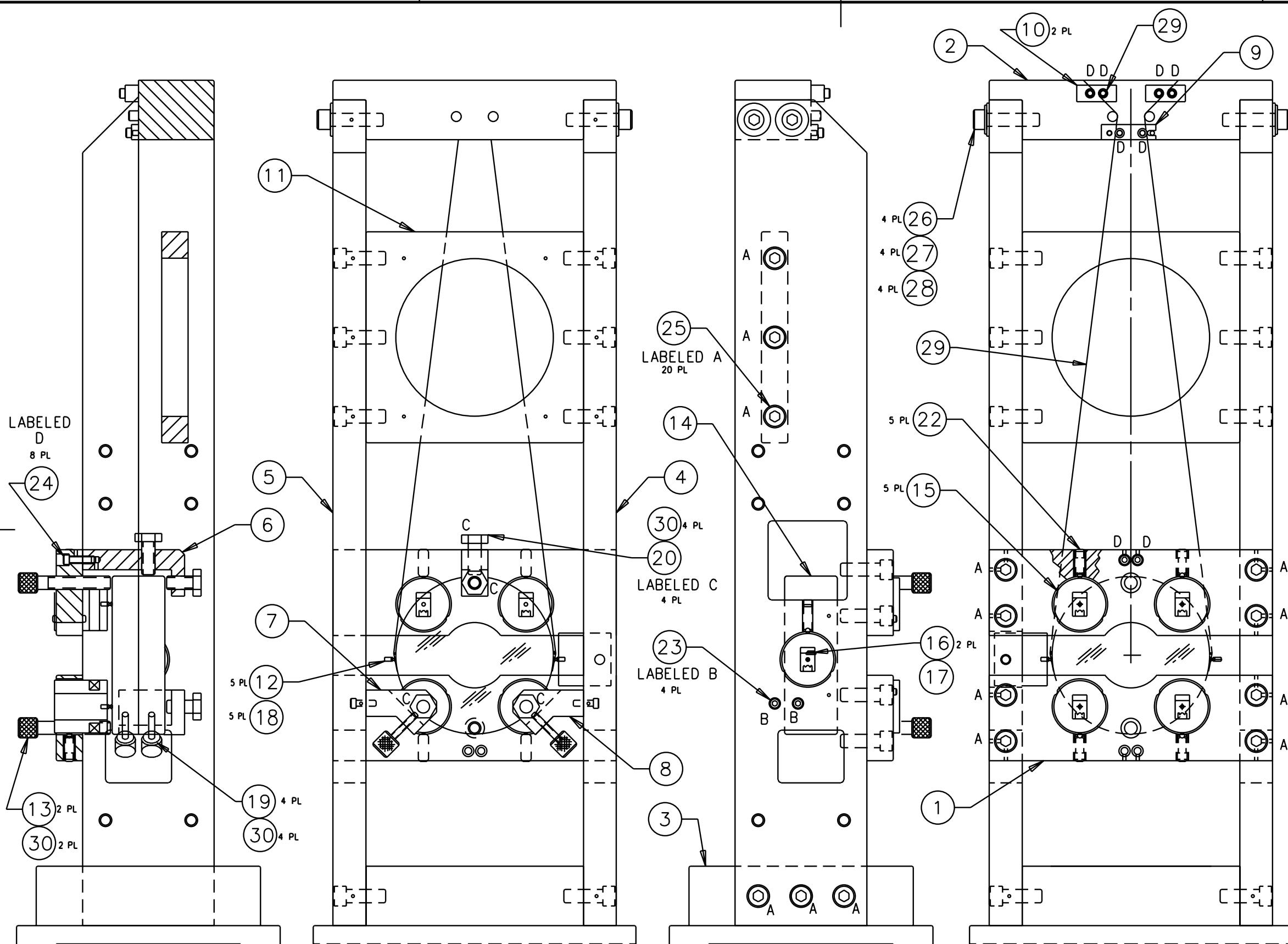


REV	DATE	BY	CHKD	DESCRIPTION
A	7-28-97	J. Hazel		E970121/INITIAL RELEASE
B	11-7-00	J. Romie		E980221/UPDATE HARDWARE



ALT	DESCRIPTION	QTY	
	LEE SPRING C1-012B-3SS	30	
	STAINLESS COMP. SPRING	30	
10	LEE SPRING C012X250PBBR	30	
	PHOSPHOR BRONZE SPRING	30	
AR	Ø.0017*±.0001*STEEL MUSIC WIRE	29	
4	1/4 SST WASHER, REDUCED OD	28	
4	1/4 SST LOCK WASHER	27	
4	UC COMPONENTS C-2020-NA	26	
	1/4-20x1.25L Ag PLATED SHCS	26	
20	UC COMPONENTS C-2012-NA	25	
	1/4-20 X.75L Ag PLATED SHCS	25	
8	UC COMPONENTS C-408-NA	24	
	4-40 X.50 LG Ag PLATED SHCS	24	
4	UC COMPONENTS C-406-NA	23	
	4-40 X.38 LG Ag PLATED SHCS	23	
5	84985A999	22	
	SST SPRING PLUNGER, 10-32	22	
	.75-2.5 LBS, McMASTER P/N		
4	D970311	20	
	SAFETY STOP, CONDUCTIVE	20	
4	D970312	19	
	SAFETY STOP, CONDUCTIVE, SMALL	19	
6	D960501	18	
	MAGNET	18	
1	D970188	17	
	GUIDE ROD	17	
2	D970187	16	
	WIRE STANDOFF	16	
5	D960011	15	
	SENSOR/ACTUATOR ASSEMBLY	15	
1		14	
	OPTIC	14	
2	D970313	13	
	SAFETY STOP, CONDUCTIVE, LONG	13	
6	D970075	12	
	DUMBBELL STANDOFF	12	
1	D960009	11	
	STIFFENER PLATE	11	
2	D960134	10	
	CLAMP, SUSPENSION BLOCK	10	
1	1205308-1	9	
	WIRE CLAMP	9	
1	D960008-2	8	
	LOWER CLAMP, OPPOSITE	8	
1	D960008-1	7	
	LOWER CLAMP	7	
1	D960007	6	
	UPPER MIRROR CLAMP	6	
1	D960006	5	
	LEFT SIDE PLATE	5	
1	D960005	4	
	RIGHT SIDE PLATE	4	
1	D960004	3	
	TOWER BASE	3	
1	D960003	2	
	SUSPENSION BLOCK	2	
2	D960002	1	
	SENSOR/ACTUATOR PLATE	1	
QNTY	PART NUMBER	DISCRIPTION	ITEM NO.

DRWN J. Hazel 12-29-95  
 CHK

**LIGO PROJECT**  
 CALIFORNIA INSTITUTE OF TECHNOLOGY  
 MASSACHUSETTS INSTITUTE OF TECHNOLOGY

**SMALL OPTIC SUSPENSION ASSEMBLY**

SCALE: 1/2  
 DRAWING NUMBER: D960001-B-D  
 SHEET: 1 of 2

NOTES: (UNLESS OTHERWISE SPECIFIED)

1. TORQUE THE SCREWS THAT HOLD THE SIDE PLATES TO THE TOWER BASE AND THE SUSPENSION BLOCK TO 100 IN LB.
2. TORQUE THE SCREWS THAT HOLD THE STIFFENER PLATE TO THE SIDE PLATES TO 100 IN LB.
3. REFER TO E970037-00-D FOR THE ASSEMBLY AND OPTIC HANGING PROCEDURE. THIS PROCEDURE ALSO DETAILS THE USE OF THE FIXTURES AND THE CLEANING AND BAKING PROCEDURES.

			49
REF	D000035	MAGNET AND DUMBBELL SANDING FIXTURE	48
REF	D961412	SET SCREW TOOL	47
REF	D970314	WINCH ADAPTER PLATE, SOS	46
REF	D000036	MAGNET-TO-DUMBBELL ASSEMBLY FIXTURE	45
REF	D970180	WINCH FIXTURE	44
REF	D000335	SMALL OPTIC GUIDE ROD GLUING FIXT	43
			42
			41
			40
REF	D000342	MAGNET/STANDOFF ASSEMBLY FIXTURE	39
			38
REF	D960159	SOS DUMMY MASS	37
ALT		10-32X.75 SOC HEAD SET SCREW	22
ALT		SENSOR/ACT. ASSY, SHORT, SMD	15
ALT	D970181	BRACKET, SOS OPTIC CLEANING	6
QNTY	PART NUMBER	DISCRIPTION	ITEM NO.

DRWN	12-29-95	LIGO PROJECT	SMALL OPTIC SUSPENSION ASSEMBLY		
CHK					
		CALIFORNIA INSTITUTE OF TECHNOLOGY MASSACHUSETTS INSTITUTE OF TECHNOLOGY	SCALE: 1/2	DRAWING NUMBER D960001-B-D	SHEET 2 OF 2