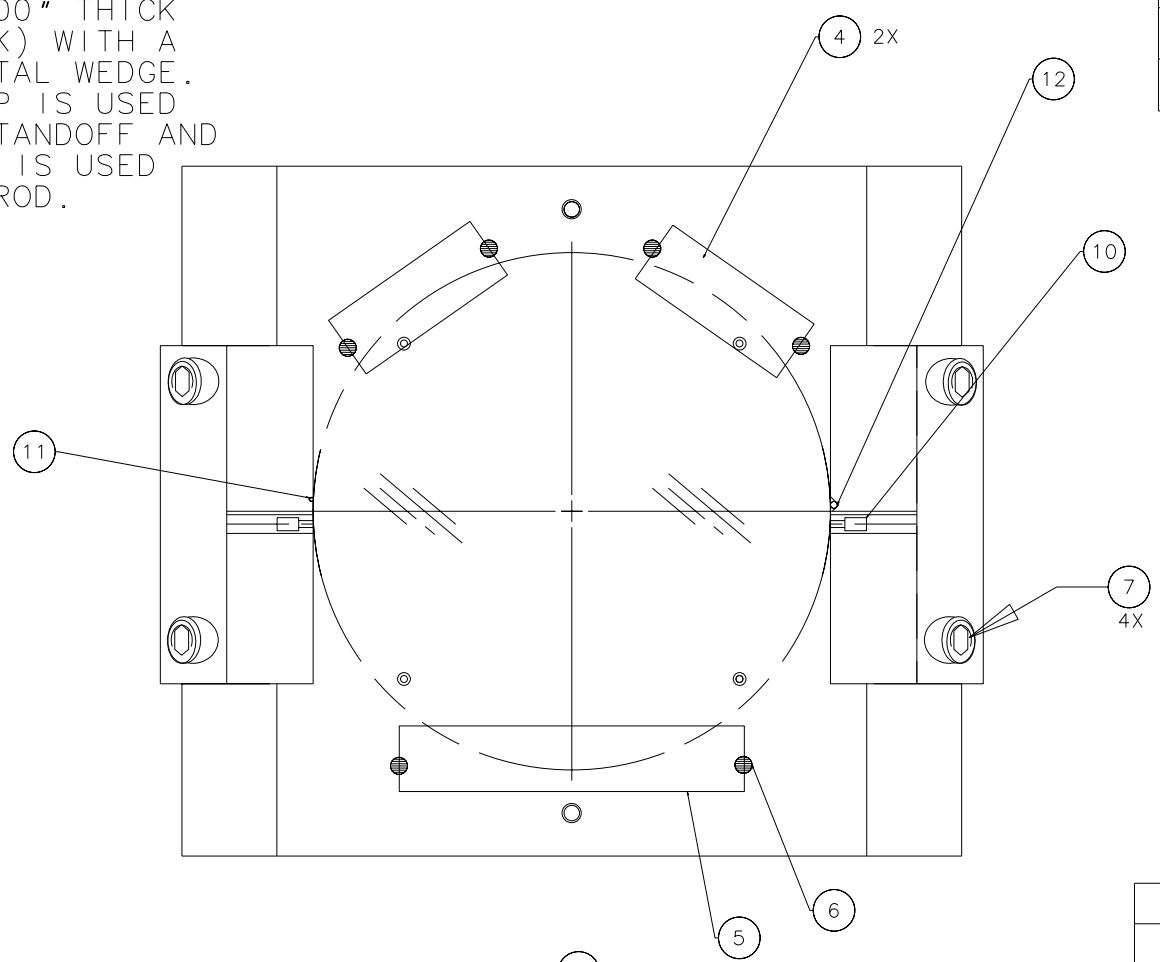
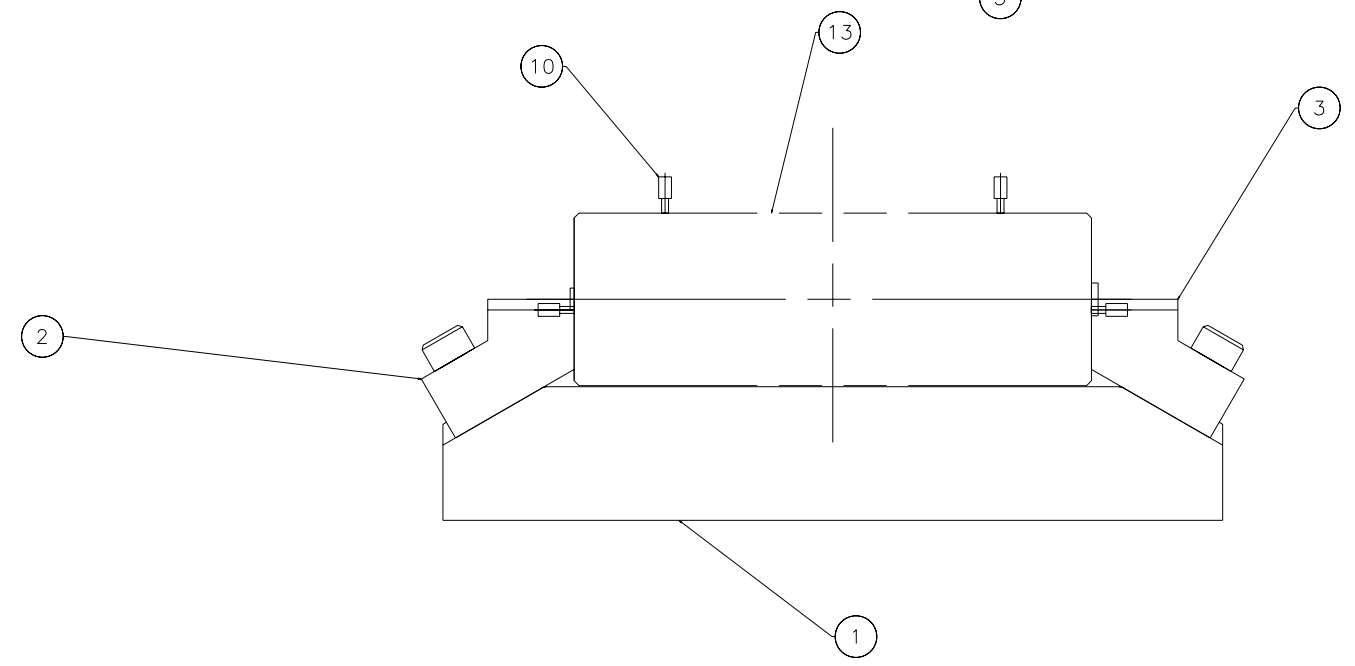
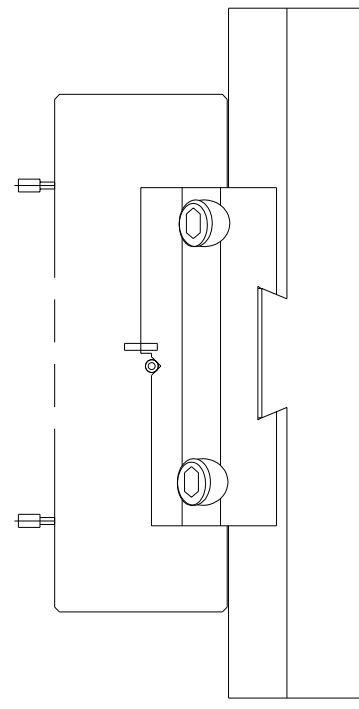


NOTES: (UNLESS OTHERWISE SPECIFIED)


1. THIS FIXTURE IS FOR AN OPTIC THAT IS $\phi 3.00"$ X $1.00"$ THICK (7.6cm x 2.5cm THICK) WITH A 0-30 MINUTE HORIZONTAL WEDGE.
2. THE RIGHT BLOCK, TOP IS USED TO MOUNT THE WIRE STANDOFF AND THE LEFT BLOCK, TOP IS USED TO MOUNT THE GUIDE ROD.



REV	DATE	DRAWN BY	CHECKED	DCC	DCN/DESCRIPTION
A	7-28-97	J.Hazel			E970121/INITIAL RELEASE



REF	QTY	NOMENCLATURE OR DESCRIPTION	MATERIAL SPECIFICATION	ITEM NO
REF		OPTIC		13
REF		WIRE STANDOFF		12
REF		GUIDE ROD		11
REF		MAGNET/STANDOFF ASSEMBLY		10
				9
				8
4		SCREW, SHCS, #8-32 x .75	STAINLESS STEEL	7
A/R		VAC-SEAL EPOXY		6
1		PROTECTIVE SHEET, KAPTON	.38x2.00x.0075	5
2		PROTECTIVE SHEET, KAPTON	.38x1.00x.0075	4
1	D970066	RIGHT BLOCK, TOP		3
1	D960018	LEFT BLOCK, TOP		2
1	D960017	BASE PLATE		1

UNLESS OTHERWISE SPECIFIED DIMENSIONS ARE IN IN (mm) TOLERANCES ARE: FRACTIONS DECIMALS N/A		APPROVALS DRAWN J. Hazel CHECKED		DATE 1/96	 CALIFORNIA INSTITUTE OF TECHNOLOGY MASSACHUSETTS INSTITUTE OF TECHNOLOGY TITLE GUIDE ROD FIXTURE SIZE B DWG NO. D960022-A-D
DO NOT SCALE DRAWING					
MATERIAL N/A					
FINISH N/A					
SCALE 1/1	FILENAME /home/dcc/docs/D960022.pdf			SHEET 1 OF 1	