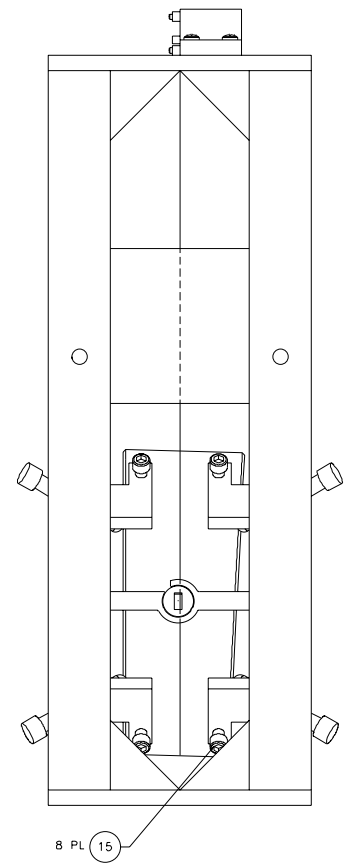
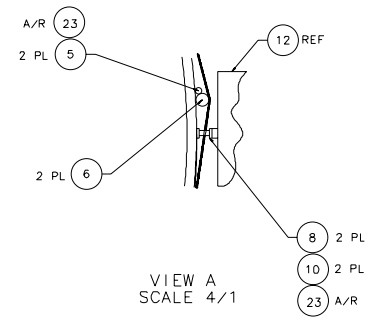
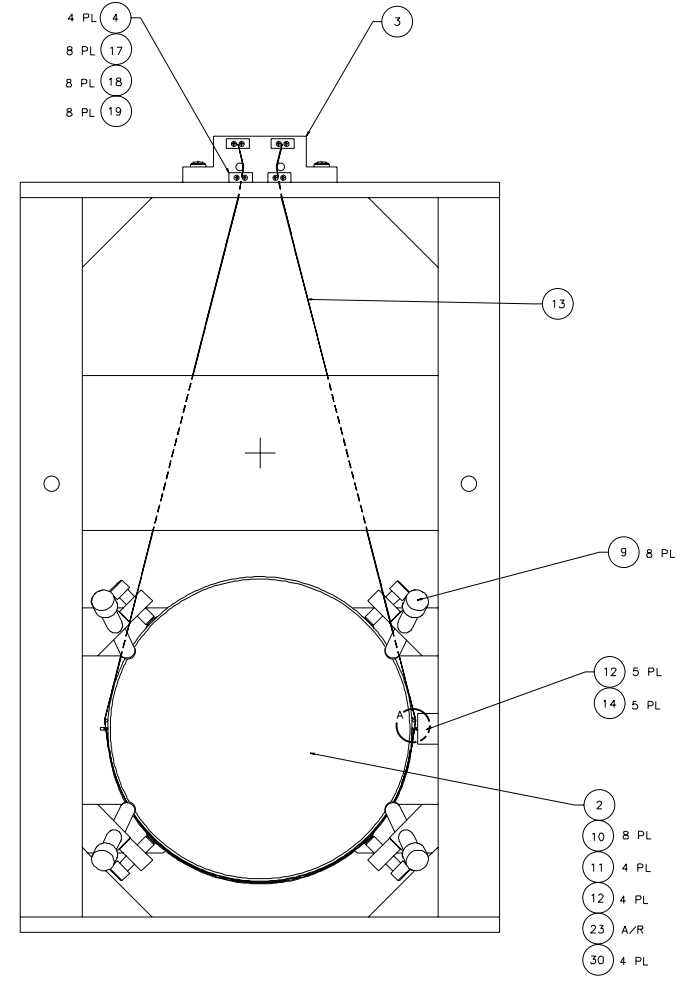
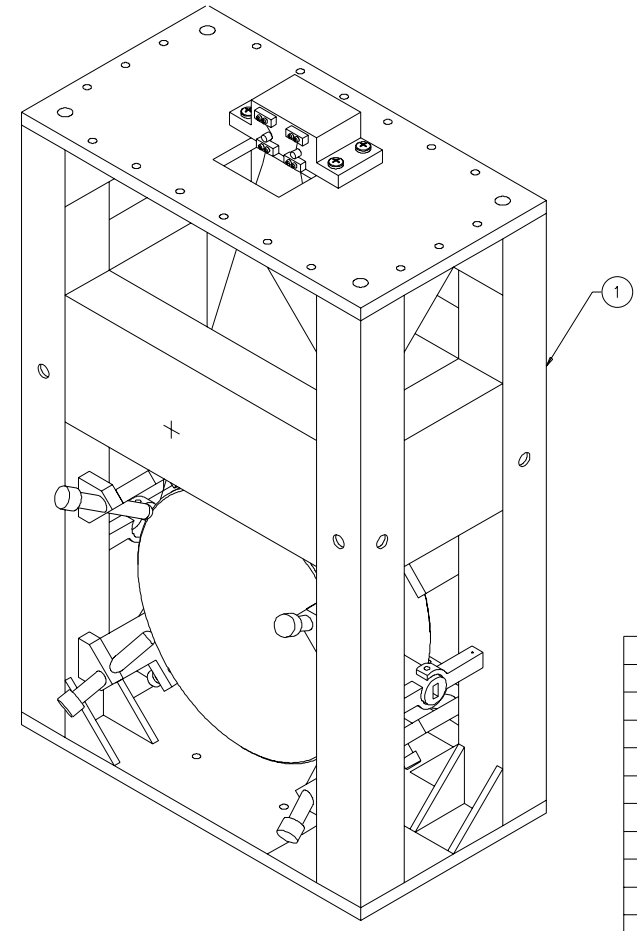
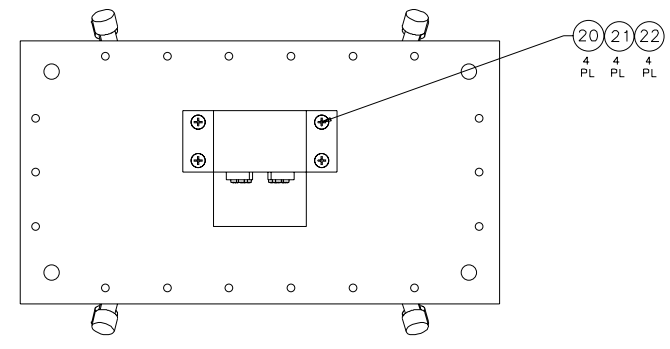


NOTES: (UNLESS OTHERWISE SPECIFIED)  
 1. SPECIFICATIONS FOR THE CONSTRUCTION OF THIS ASSEMBLY ARE COVERED IN THE LARGE OPTIC SUSPENSION BALANCING SPECIFICATION, LIGO E970154.  
 ② MATERIAL: CONDUCTIVE TEFLON, MANUF. BY FURON DIXON, 386 METACOM AVE., BRISTOL, RI, 02809, (401)253-2000, AND DESIGNATED BY THE NAME FURON DIXON COMPOUND 1042.  
 ③ HEIGHT ADAPTER IS NOT SHOWN FOR CLARITY. IT IS BOLTED TO THE TOP OF THE LOS STRUCTURE ASSEMBLY USING THE HARDWARE ITEM NOS. 25-28. INSTRUCTIONS INCLUDED IN LIGO E970154.



REV	DATE	DRAWN BY	CHECKED	DCC	DCN/DESCRIPTION
A	1/19/98	J. Hazel		L. Turner	E980004/INITIAL RELEASE
B	4/8/98	C. Conley			E980077/UPDATE PARTS LIST

QTY	ITEM	PART OR IDENTIFYING NO.	DESCRIPTION OR SPECIFICATION	MATERIAL	UNIT
		D970180	WINCH FIXTURE		41
		D960761	FIXTURE, LIFTING		40
		D970074	FIXTURE, MAGNET-TO-DUMBBELL STANDOFF		39
		D960763	FIXTURE, TEST MASS		38
		D960752	FIXTURE, OPTICAL LEVELER		37
		D960753	FIXTURE, WIRE AND OPTICS		36
		D960147	FIXTURE, GUIDE ROD		35
		D960050	FIXTURE, MAGNET/STANDOFF ASSY		34
		D970169	MAGNET STRENGTH FIXTURE		33
		D970616	COIL STRENGTH FIXTURE		32
					31
		D970615	PAM SCREW		30
					29
18		1/4-20 x 1.5 LG SHCS		STAINLESS, Ag PLTD	28
18		1/4-20 LOCK WASHER		STAINLESS, AG PLTD	27
18		1/4-20 FLAT WASHER		STAINLESS, AG PLTD	26
12		1/4-20 HEX NUT		STAINLESS	25
1	D960145	HEIGHT ADAPTER	③		24
A/R		EPOXY, VAC-SEAL			23
4	COMMERCIAL EQUIV NAS620416L	WASHER, FLAT, #1/4		STAINLESS	22
4	COMMERCIAL EQUIV MS35338-139	WASHER, SPLIT LOCK, #1/4		STAINLESS	21
4	U-C COMPONENTS P/N C-2016-NA	SCREW, SHCS, 1/4-20 x 1.00		STAINLESS, Ag PLTD	20
8	COMMERCIAL EQUIV NAS620C4L	WASHER, FLAT, #4		STAINLESS	19
8	COMMERCIAL EQUIV MS35338-135	WASHER, SPLIT LOCK, #4		STAINLESS	18
8	U-C COMPONENTS P/N C-412-NA	SCREW, SHCS, 4-40 x .75		STAINLESS, Ag PLTD	17
					16
8		SCREW, HEX HEAD, 3/8-16 x 1.50	②		15
6	U-C COMPONENTS P/N T-1003-NA	SET SCREW, SOCKET, 10-32 x .188		STAINLESS, Ag PLTD	14
A/R		WIRE, $\phi$ .0120 $\pm$ -.0003*		MUSIC WIRE	13
5	D960138	SENSOR/ACTUATOR HEAD ASSEMBLY			12
4	D970075	DUMBBELL STANDOFF			11
10	D960501	MAGNET			10
8	D960499	LOS CHAMFER STOP			9
2	D960149	LOS SIDE STANDOFF			8
					7
2	D960755	LOS LARGE WIRE STANDOFF			6
1	D960146	LOS GUIDE ROD			5
4	D960134	LOS CLAMP, SUSPENSION BLOCK			4
1	D960144	LOS SUSPENSION BLOCK			3
1	COATING SPEC E980068	OPTIC, $\phi$ 25cm x 10cm THICK		[END TEST MASS]	2
1	D960133	LOS STRUCTURE ASSEMBLY			1

NEXT ASSEMBLY	FINAL	MATERIAL	N/A	SIZE	E	REV	B
FILE LOCATION	home/dcc/docs/D960132.pdf	FINISH	N/A	SCALE	1/2	SHEET	1 OF 1

UNLESS OTHERWISE SPECIFIED DIMENSIONS ARE IN INCHES TOLERANCES ARE FRACTIONS DECIMALS ANGLES

APPROVALS DATE LIGO CALIFORNIA INSTITUTE OF TECHNOLOGY MASSACHUSETTS INSTITUTE OF TECHNOLOGY

DRAWN J. Hazel 5/98 TITLE LARGE OPTIC SUSPENSION ASSEMBLY (LOS1a) FOR END TEST MASS

CHECKED

PARTS LIST