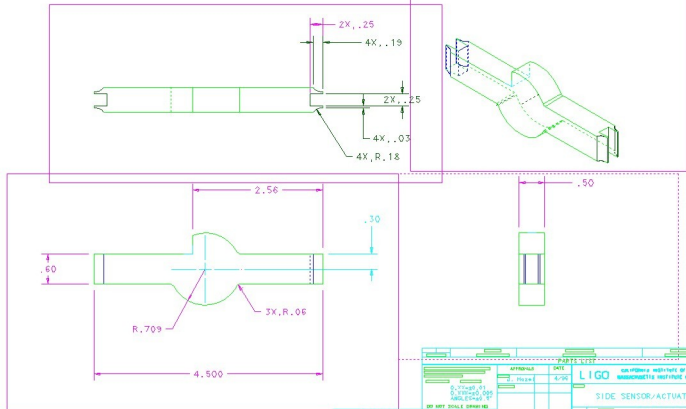


NOTES: (UNLESS OTHERWISE SPECIFIED)

1. BREAK ALL SHARP EDGES.

REV	DATE	DRAWN BY	CHECKED	DOC	DCN/DESCRIPTION
A	2/5/95	J. Hazel			E980010/INITIAL RELEASE
B	8/25/98	J. Remie			E980231/ADD CLEANING SLOT/ADCN
C	10/15/98	J. Remie			E980275/CHANGE WELD PREP INCORPORATE REV B



APPROVALS		DATE	LIGO	
J. Hazel		4/98	CALIFORNIA INSTITUTES OF TECHNOLOGY MASONNETTE INSTITUTE OF TECHNOLOGY	
D960141			SIDE SENSOR/ACTUATOR PLATE	
304 STAINLESS			D960141	
SCALE 1/1			SHEET 1 OF 1	